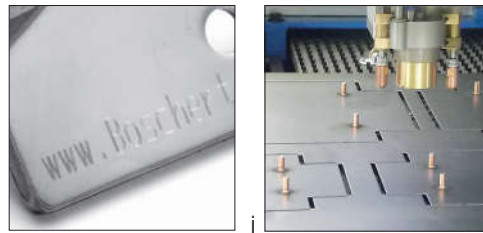


Optional components of the COMPACT

- a The automatic tool lubrication serves to increase tool life when nibbling stainless steel (VA) and decreases edge burrs in aluminium
- b Repositioning up to 10 meters and clamp movement without contacting the sheet. 2 robust clamps for sheets up to 200 kg (expandable to 4 clamps). Standard capacity up to 7 mm or 12,7 mm when required (Standard)
- c Sandblasted, corrosion resistant surface as standard. Balls in the table for heavier sheets and easy handling, brushes in the table for thin or scratch sensitive sheets are also available
- d Vacuum slug removal
- e BG-CUT CNC/CAD software to import DXF-files into machine language, calculates punch time, graphic simulation
- f Nibbling up to 800 strokes / min with integrated oil cooling
- g Programmable repositioning of the clamps for faster set up of the machine (Standard)
- h Tapping and drilling attachment for threads M3 up to M12 and smaller drilled holes in thicker sheets
- i Marking apparatus for marking parts in 10 different fonts
- j Stud welding
- k Composite material milling



COMPACT

Punching

Nibbling

Forming

Marking

Tapping



BOSCHERT
GmbH+Co.KG
Mattenstraße 1
79541 Lörrach, Germany
Telephone : +49 7621 9593-0
Telefax: +49 7621 55184
www.boschert.de
info@boschert.de



simply better!



COMPACT

The COMPACT punching machine from **BOSCHERT** is the perfect machine for the first-time user of CNC punching technology. Advantages: user-friendly graphic programming, high quality with low cost, small floor space requirement.

Heavy duty C-frame construction allows working of oversized sheets, by using turning and automatic repositioning function.

COMPACT Rotation Index

Stepless 360 degree rotation of all tools up to 105 mm diameter using brushless DC motors and pneumatic indexing of Revotools. The 7-way Revotool was especially constructed for this model. In addition to 6 tools with a diameter of 16 mm each, with a slitting tool of 5 x 30 mm it is possible to punch nearly every contour, allowing complete processing of the sheet without changing tools.

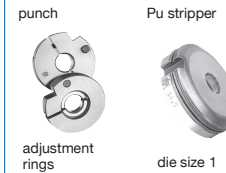
Tooling



Quick change tool cassettes hold the punch, die and stripper and are set off-line so as not to limit machine run time.

Trumpf® standard tooling

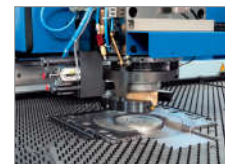
- easy handling
- low cost
- long tool life
- long regrind length



Punching head rotation



Solid construction with DC motor and measuring system



Index equipment and also stripper height adjustment

Control panel



10,5" TFT colour screen, ergonomically designed. It is adjustable and mounted on casters. USB, dual palm buttons, emergency-off. The powerful graphic and conversational software guarantees simple and fast programming. It is also available in a PC version.

Frame



Solid welded steel construction guarantees the highest stability for punching sheets up to 12,7 mm thickness.

Electrical cabinet



Open and easily surveyed panel includes digital control, cooling fan, transformers and control.

Industrial CPU



Control with internal memory, USB port and LAN RJ 45 for network connection. Possible remote maintenance by internet.

Technical Data

Working area			
Compact	500 x 1000 (2000)	560 x 1080 mm (2080)	
Compact	750 x 2000	810 x 2080 mm	
Compact	1000 x 2000	1060 x 2080 mm	
Compact	1250 x 2000 (2500)	1310 x 2080 mm (2580)	
Compact	1500 x 2000 (3000)	1560 x 2080 mm (3080)	
Performance			
Max. sheet thickness	12,7 mm clamp opening / Revotool 6 mm ¹		
Max. sheet length	9999 mm by repositioning		
Max. hydraulic punching power	280 kN (optional 400 kN)		
Max. workpiece weight	200 kg		
Speeds			
Max. positioning speed			
X- axes	80 m/min		
Max. positioning speed			
Y- axes	80 m/min		
simultaneous X & Y	85 m/min		
Max. strokes standard hydraulic	250 strokes/min		
Max. strokes fast hydraulic	400 strokes/min		
Max. strokes fast HBL hydraulic	800 strokes/min		
Toolings			
Trumpf® tooling system			
Max. punching diameter	105 mm or any shape within 105 mm		
Revotool	4 / 6 / 7 & 8 stations		
Time of tool changing	2-4 sec. Revotool		
	15 sec. manual		
Axes accuracy during punching process			
Positioning difference	+ - 0,10 mm		
Repeatability	+ - 0,03 mm		
Space requirement and weights ²		B (X)	T (Y) H
Compact	500 x 1000 (2000)	2900 (4000) x 2540 x 2100 mm	5800 (6000) kg
Compact	750 x 2000	4000 x 3165 x 2100 mm	7500 kg
Compact	1000 x 2000	4000 x 3790 x 2100 mm	9200 kg
Compact	1250 x 2000 (2500)	4000 (5860) x 4410 x 2100 mm	10800 (11000) kg
Compact	1500 x 2000 (3000)	4000 (6860) x 5058 x 2100 mm	14000 (15400) kg
Electrical Values standard hydr. / fast hydr.			
Electrical connecting value	20 / 25 kVA		
Hydraulic motor	4,8 / 11 kW		
Electrical consumption 2 mm sheet thickness continuous operation	4,9 / 7,7 kW/h		
Electrical consumption 4 mm sheet thickness continuous operation	5,4 / 8,75 kW/h		
Required fuse	3 x 25 A / 3 x 35 A		
Pneumatic connecting value	min. 4 bar		
Hydraulic oil	115 / 160 litre		

¹ Mild steel St 40/mm²

² The exact values can be found in each specific installation plan

¹ Mild steel St 40/mm²

² The exact values can be found in each specific installation plan

