

**SUCCESS IS
OUR DRIVE**

85

YEARS AND COUNTING





Innovation, tradition and customer focus are the cornerstones of SEW-EURODRIVE.

That was the case when our company was founded 85 years ago and it is still true today. What began as a small workshop with 16 employees has become a global family-run drive engineering business. SEW-EURODRIVE now has over 16 000 employees, who demonstrate their commitment by working day in, day out to ensure the machines and systems of customers throughout the world keep on moving.

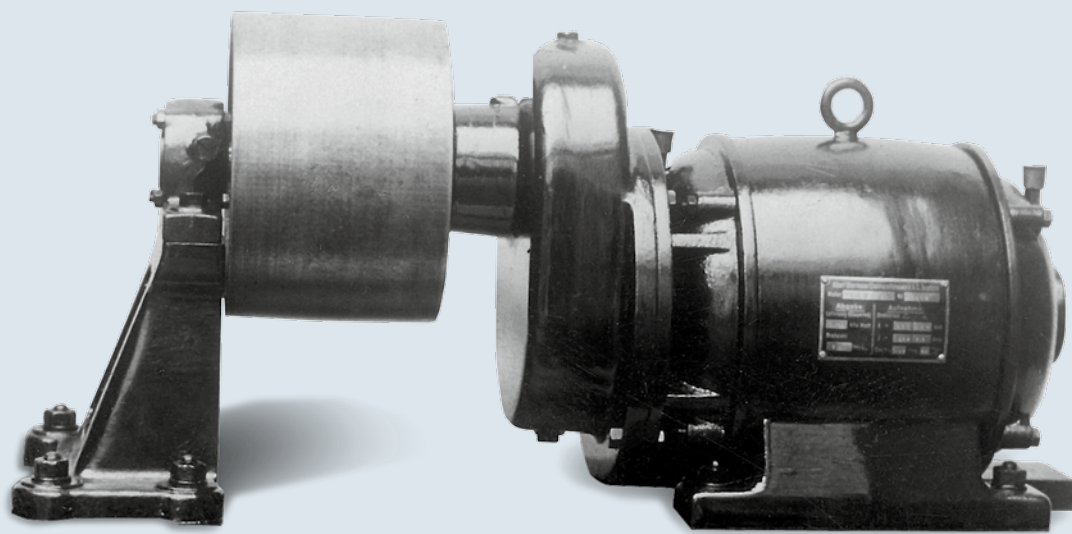
Thanks to a broad-based product portfolio and a wide range of customer-oriented service modules, we offer our customers clear added value and measurable benefits. These are made possible by powerful drives, high quality standards and customized solutions.

On the occasion of our 85th anniversary, I'd like you to join me in looking back at our history and looking toward to the future. After all, the world will keep on turning, everyone will keep on moving and so too will SEW-EURODRIVE.

Best wishes from Bruchsal,

A handwritten signature in black ink, appearing to be 'J. Blickle', written in a cursive style.

Jürgen Blickle
Managing Director and President

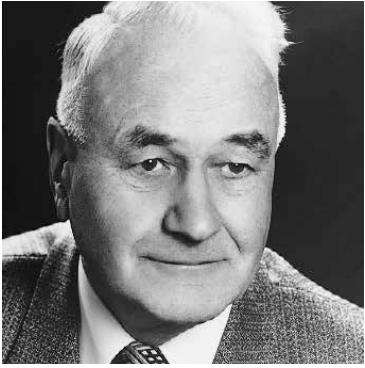


IT ALL BEGAN WITH AN INGENIOUS IDEA

85 YEARS AGO

The 85-year history of SEW-EURODRIVE started with an ingenious inventor, Albert Obermoser. His geared motor designed in 1928 revolutionized drive engineering.

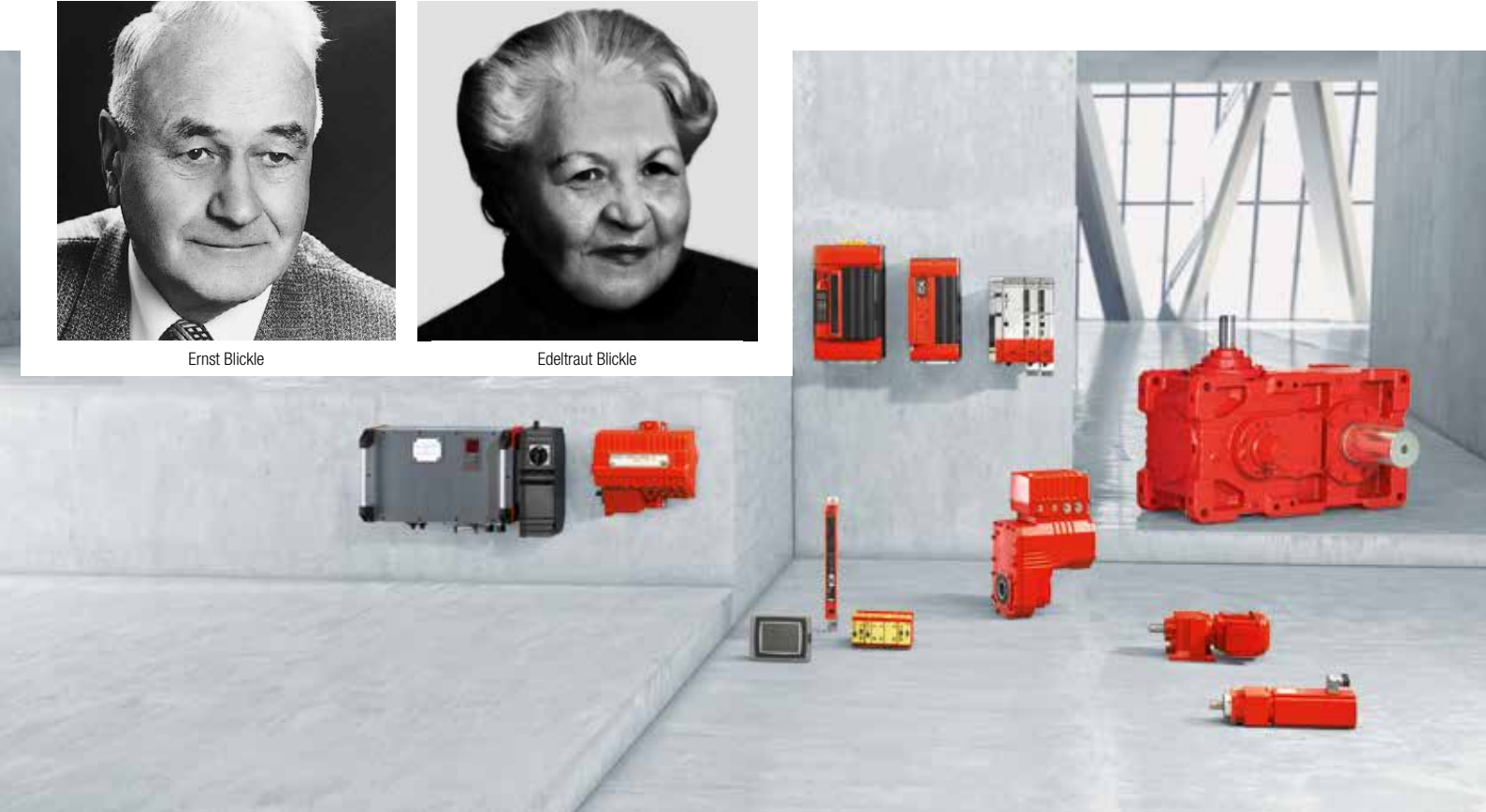
It was Christian Pähr who recognized the enormous potential of this state-of-the-art drive and in 1931, amid political and social instability, had the courage to start a company that set standards and made a lasting change to the world of mobility – Süddeutsche Elektromotoren-Werke in Bruchsal, or SEW for short.



Ernst Blickle



Edeltraut Blickle



AN 85-YEAR SUCCESS STORY

85 YEARS AND COUNTING

Time moved on, but the family-owned business remained. In 1945, with Central Europe in ruins, Christian Pähr's son-in-law Ernst Blickle took on overall responsibility at SEW-EURODRIVE. He helped shape Germany's economic miracle. Under his expert leadership, a further milestone in drive engineering was achieved in 1965 with the launch of the modular system for gearmotors. Technology changed, but the basic principle remained the same.

Today, the wide variety of offerings – ranging from high-quality individual components to intelligent all-in-one solutions – continues to give our company a crucial competitive edge.

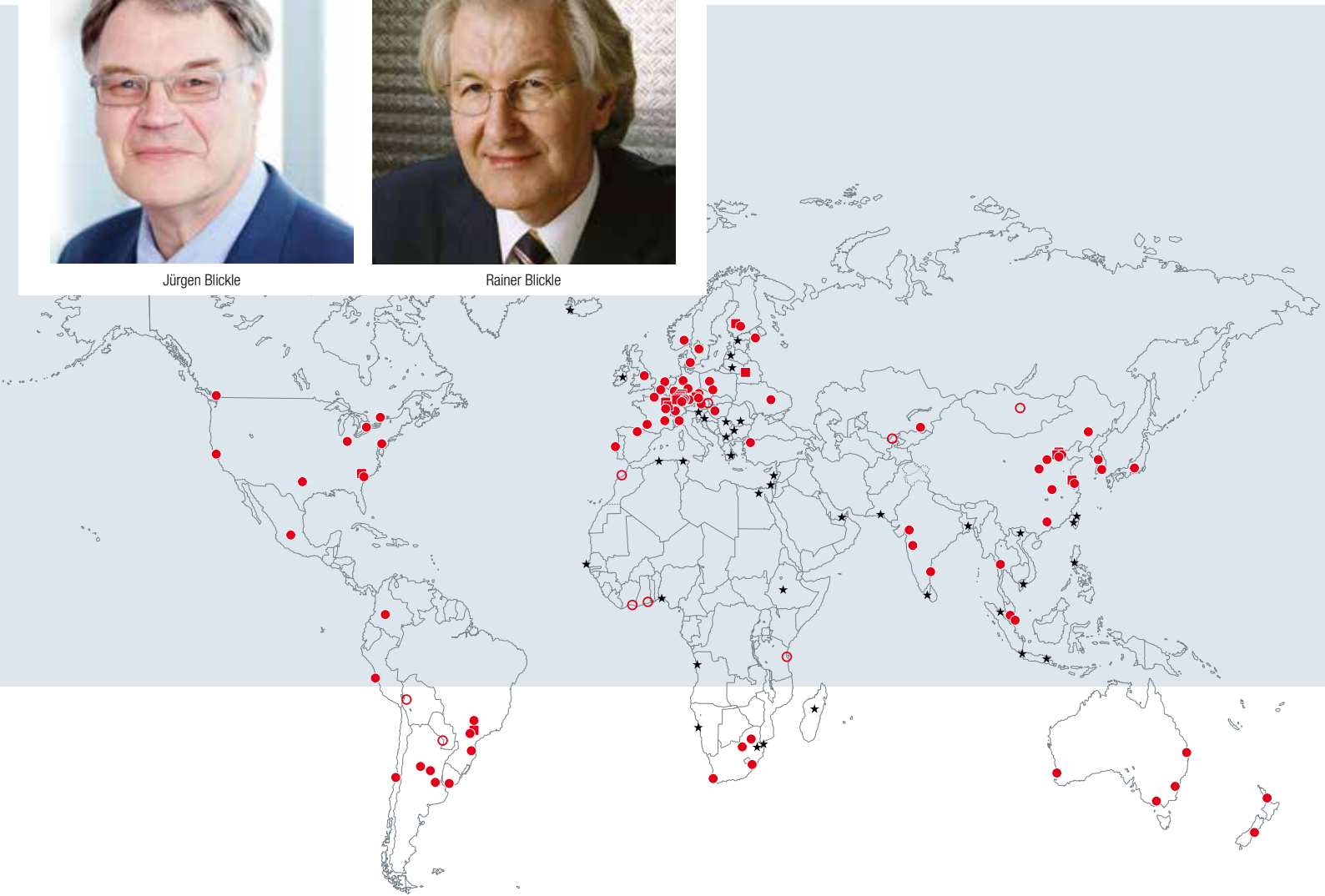
Following Blickle's death in 1986, his wife Edeltraut initially took the helm at SEW-EURODRIVE as Managing Director and President. During this period, a new course was set for the company's future.



Jürgen Blicke



Rainer Blicke



FROM LOCAL PLAYER TO GLOBAL LEADER

IN JUST **85** YEARS

The first production plant outside Germany was established by Ernst Blickle in Haguenau, France, in 1960. His two sons Rainer and Jürgen Blickle have continued to spearhead the company's international mission since 1987, with great success. Its status as a global player has gone from strength to strength.

The foundation of SEW-EURODRIVE INC. in Lyman in the United States is particularly notable. Along with the headquarters in Germany and the site in China, it is one of the company's most important locations.

Today, we're the proud owner of 15 production plants and 79 Drive Technology Centers in 48 countries. The company has more than 16 000 employees worldwide, including 550 in research and development alone. In fiscal year 2014/2015, sales were 2.6 billion euros. SEW-EURODRIVE is thus one of the international market leaders in drive engineering and drive automation.

Bruchsal has always been at the heart of the company's operations. Here, standards are set that impress industries around the world, from the automotive and beverage sectors to transportation, logistics and mining. Our motto is: Driving the world.

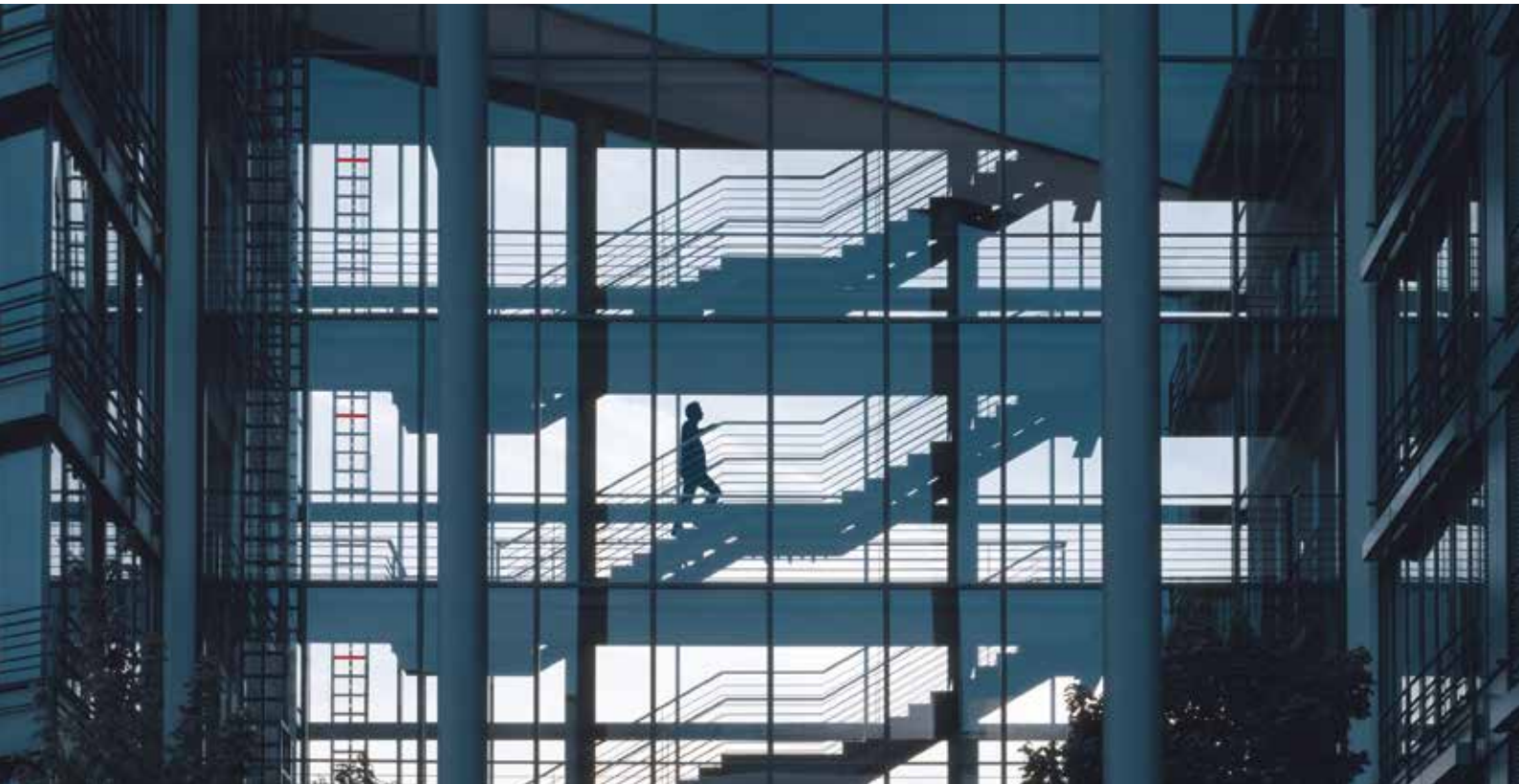
QUALITY AND WORKMANSHIP

FOR **85** YEARS

SEW-EURODRIVE is synonymous all over the world with high-performance and dynamic drive engineering. Our products – whether gearmotors, electronically controlled drives, components for local installation, mechanical variable-speed drives or the comprehensive service program – represent top engineering “Made in Germany” and a high level of reliability.

Our success is the result of hard work – the product of a mindset that affirms and creates values. As a family-owned business, we are committed to promoting social responsibility and a sense of togetherness as well as discipline, loyalty and dedication.

“The human dimension is key” – this principle has always been pivotal to our corporate philosophy, and will continue to be so in the future.



THE FUTURE STARTS NOW

85 YEARS AND COUNTING

A willingness to change and the ability to identify new trends while remaining true to its own values have always been hallmarks of SEW-EURODRIVE.

This ability to adapt to the needs of a constantly changing market has played a key role in continuously strengthening and developing the company's market leadership. The numerous awards that SEW-EURODRIVE has received over the years – from "Customer Champion" to "Baden-Württemberg's prize for environmental technology" – are a visible result of this process.

Our concrete vision for the future is "Industry 4.0 – from Smart Factory to Smart Company" – naturally by using drive engineering and drive automation of SEW-EURODRIVE. This aims to combine the "new" concepts of Industry 4.0 with the established principles of lean management, thereby intelligently networking all the elements involved in a value creation process – people, machines and products. This isn't just about technical innovations but a creative value-added process where creative employees are center stage and function as "directors."

The showcase factory at our production and logistics plant in Graben-Neudorf provides impressive proof that SEW-EURODRIVE's ideas on this topic are not just theory. This factory presents logistics processes designed using flexible, autonomous logistics assistants in line with Industry 4.0. It utilizes our complete technology portfolio – from simulation, drive technology and the full range of control and automation technology right through to navigation and tracking, power supply and storage, visualization and object-oriented parameterization. This is enabling us to realize our vision of intelligent production.

85 YEARS AND COUNTING