

TC1 Series

Manual Tool Changer / Coupler

DESTACO's TC1 Series tool changers are ultralight, compact, and ideal for cobot work cells and applications requiring custom coupling solutions. Designed for safety, ease of use, durability, and excellent repeatability, this tool changer features a very low profile and a coupling solution with pneumatic and electrical pass-thru capability. The tool changer features ISO 9409 mounting, plus a highly adaptive blank version that is easily modified by machine builders for application specific needs.

This innovative tool changer includes optional electrical pass-thru modules that connect directly to the cobot arm electrical connector. Robohand grippers mount directly to the tool plate via DirectConnect. The customizable large open center space makes this adaptable as a coupling device for other tooling systems.

The TC1 tool changer is operator friendly with passive locking and push button release requiring very low insertion force. The one-handed operation makes this device the easiest product to operate anywhere.



Product Highlights/Options

- 330g lightweight coupling solution
- Self-locking insertion, push button release
- Visible lock status indicator for safety
- Electrical and pneumatic utilities
- Low profile 25mm coupled solution



Features, Markets and Applications

<p>SPEED</p>	<ul style="list-style-type: none"> • Pushbutton release for quick tool change by station operators • Four integrated pass through air ports eliminates air line cable reconnects for quick tool coupling • Electrical pass-thru modules offers fast power/signal connectivity 	<p>TRANSPORTATION</p>	<p>WELDING</p>
<p>INTERCHANGEABLE</p>	<ul style="list-style-type: none"> • Compatible with robots using an ISO-9409-1-50-4-M6 mounting pattern • Compatible with Robohand products via DirectConnect mounting pattern without adapters 	<p>CONSUMER GOODS</p>	<p>ASSEMBLY</p>
<p>PERFORMANCE</p>	<ul style="list-style-type: none"> • Excellent durability and repeatability to +/-0.025mm with self-positioning tapered insertion guide • Easily adapted to custom mounting patterns both robot plate and tool plate 	<p>INDUSTRIAL</p>	<p>CNC MACHINING</p>
		<p>FOOD & PACKAGING</p>	<p>FIXTURE/TEST</p>

TC1 Series Manual Tool Changer | Features and Options

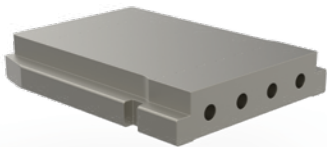
TC1 Series consists of robot plates, and tool plates. Any number of tool plates can be used with any TC1 robot plate. The tool plate is inserted into robot plate via a guided slot design and cannot be inserted incorrectly.



TC1 Integrated Air Ports
Four pneumatic pass-through connections for quick tool coupling

TC1 Tool Plates
(Tool mounting surface shown)

TC1-050T-00 (Blank)
for custom tooling mounting patterns



TC1-050T-01 with **DIRECTCONNECT**
mounting to DESTACO Robohand Products



TC1-050T-02 with cobot/robot
ISO-9409-1-50-4-M6 mount pattern



TC1-050M-01 robot plate with ISO-9409-1-50-4-M6 mounting pattern for cobot/robot



Blank version (TC1-050M-00) available for custom mounting patterns



TC1 Cobot Electrical Module connects directly to cobot providing pass thru power/signal connection to tooling

Passive Locking/Pushbutton Release
Simple pushbutton release with automatic locking allows for fast tool changeover by station operators. Unlock warning indicator is visible when tool plate is not fully inserted.



Optional Tool Holder - TC1-050H-01 is lightweight, rigid and features a guided slot for easy tool plate insertion



Optional tool holder shown with TC1-050T-01 inserted

Dimensions and technical information are subject to change without notice.

GERMANY
+49-6171-705-0
europe@destaco.com

FRANCE
Tel: +33-4-7354-5001
france@destaco.com

UNITED KINGDOM
+44-1902-797980
uk@destaco.com

SPAIN
+34-936361680
spain@destaco.com

NETHERLANDS
+31-297285332
benelux@destaco.com

CHINA
+86-21-6081-2888
china@destaco.com

THAILAND
+66-2-326-0812
asia@destaco.com

INDIA
+91-80-41123421-426
india@destaco.com

USA
+1-888-DESTACO
+1-248-836-6700
northamerica@destaco.com