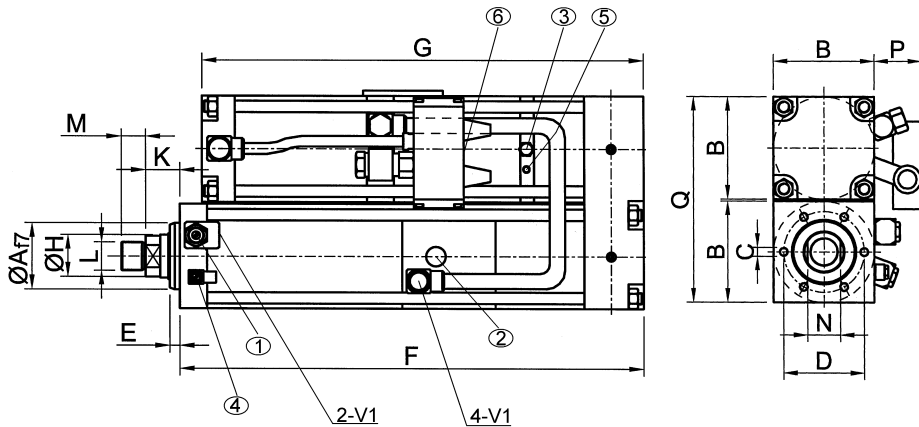
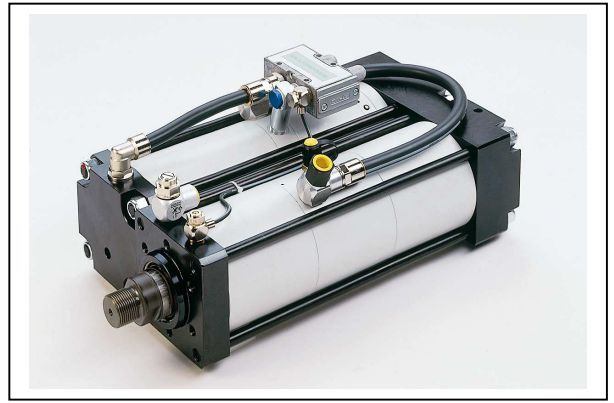


MULTIPOWER

type: U
 size: 300 kN (rated force)
 power stroke: up to 12 mm (1/2")



- ① flow control throttle D1
- ② high pressure connection
- ③ oil refill connection
- ④ throttle D2
- ⑤ „begin power stroke”
- ⑥ air connection at valve V2

stroke independent values in mm:

Af7	B(1)	B2	C	D	E	Ø H	K	L	M	N	P	Q
100	175	-	6 x M20x30	132	13	56	42	M39x2	35	50	85	354

stroke dependent total length – measurement F:

total stroke length in mm															
32		50		100		150		200		250		300		350	
F	G	F	G	F	G	F	G	F	G	F	G	F	G	F	G
8															

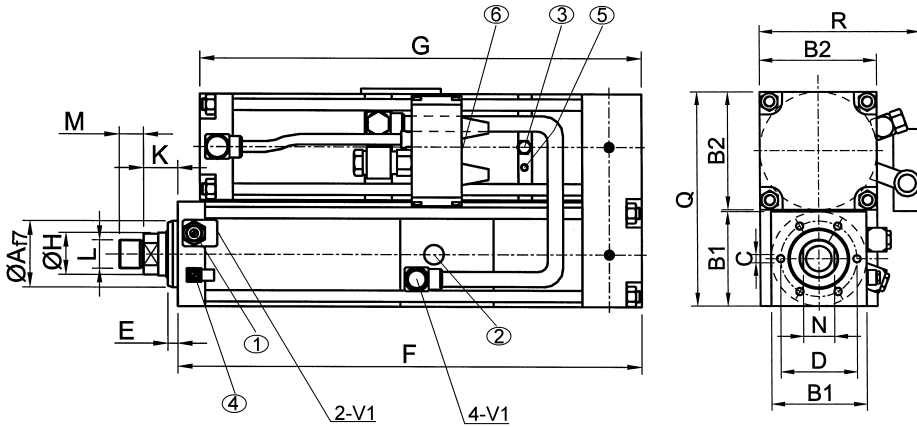
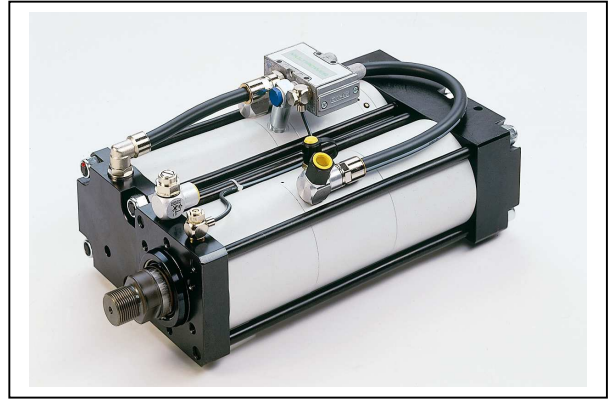
Version	Power Stroke Length in mm	Total Length in mm																
		3	6	8	10	12	3	6	8	10	12	3	6	8	10	12		
10-bar-version	3																	
	6																	
	8																	
	10																	
	12																	
8-bar-version	3				649	614	718	683	782	747	851	816	915	880	979	944	1043	1008
	6				781	746	850	815	914	879	983	948	1047	1012	1111	1076	1175	1140
	8																	
	10																	
	12				1045	1010	1114	1079	1178	1143	1247	1212	1311	1276	1375	1340	1439	1404
6-bar-version	3				705	670	790	755	870	835	955	920	1035	1000	1115	1080	1195	1160
	6				855	820	940	905	1020	985	1105	1070	1185	1150	1265	1230	1345	1310
	8																	
	10																	
	12																	

Other stroke lengths on request.

Subject to technical modifications without notice (version 08/2004)

MULTIPOWER

type: U
 size: 150 kN (rated force)
 power stroke: up to 28 mm (1")



- ① flow control throttle D1
- ② high pressure connection
- ③ oil refill connection
- ④ throttle D2
- ⑤ „begin power stroke”
- ⑥ air connection at valve V2

stroke independent values in mm:

Af7	B(1)	B2	C	D	E	Ø H	K	L	M	N	R	Q
75	135	175	6 x M16x25	100	15	50	36	M30x2	25	41	260	314

stroke dependent total length – measurement F:

total stroke length in mm															
32		50		100		150		200		250		300		350	
F	G	F	G	F	G	F	G	F	G	F	G	F	G	F	G

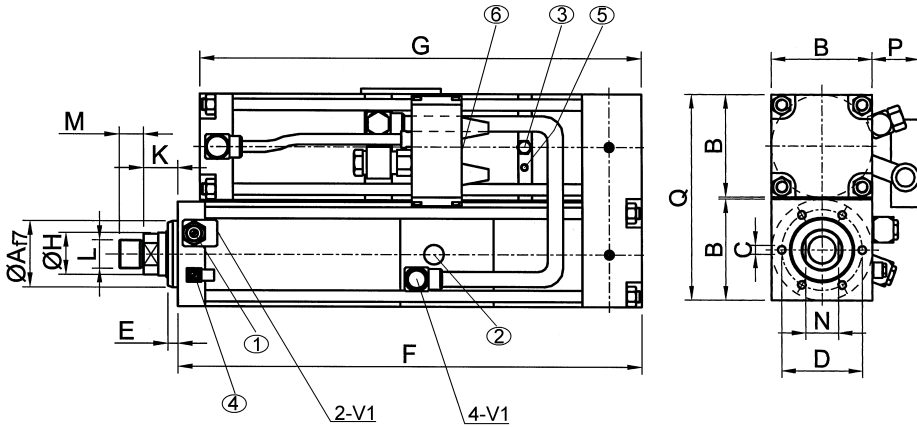
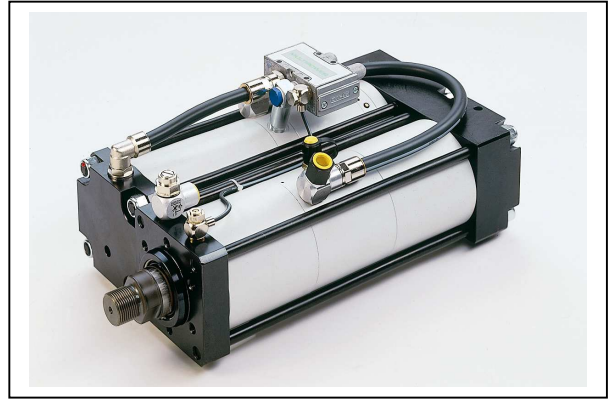
Version	Power Stroke Length in mm	Total Length in mm															
		20	22	24	26	28	32	50	100	150	200	250	300	350			
10-bar-version	20																
	22	749	714	749	714	784	749	819	784	854	819	889	854	924	889	959	924
	24																
	26																
	28																
8-bar-version	20																
	22																
	24																
	26																
	28																
6-bar-version	20			939	904	984	949	1029	994	1074	1039	1119	1084	1164	1129	1209	1174
	22																
	24			1039	1004	1084	1049	1129	1094	1174	1139	1219	1184	1264	1229	1309	1274
	26																
	28																

Other stroke lengths on request

Subject to technical modifications without notice (version 08/2004)

MULTIPOWER

type: U
 size: 150 kN (rated force)
 power stroke: up to 12 mm (1/2")



- ① flow control throttle D1
- ② high pressure connection
- ③ oil refill connection
- ④ throttle D2
- ⑤ „begin power stroke“
- ⑥ air connection at valve V2

stroke independent values in mm:

Af7	B(1)	B2	C	D	E	Ø H	K	L	M	N	P	Q
75	135	-	6 x M16x25	100	15	50	36	M30x2	25	41	75	274

stroke dependent total length – measurement F:

total stroke length in mm															
32		50		100		150		200		250		300		350	
F	G	F	G	F	G	F	G	F	G	F	G	F	G	F	G

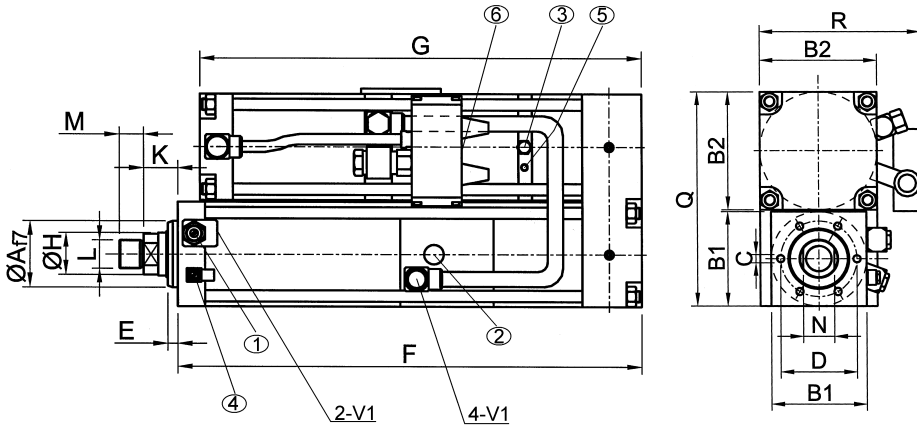
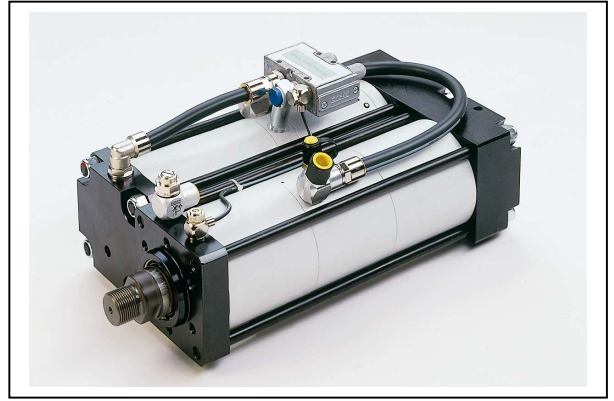
Version	Power Stroke Length in mm	Total Length in mm																																																																																																
		3	6	8	10	12	3	6	8	10	12	3	6	8	10	12	3	6	8	10	12	3	6	8	10	12																																																																								
10-bar-version	3	406	398	411	403	455	447	499	491	553	535	653	579	753	623	853	667	444	436	449	441	499	491	549	541	599	591	653	641	753	691	853	741	504	496	509	501	567	559	625	617	683	675	741	733	799	791	857	849	536	528	541	533	585	577	629	621	673	665	717	709	761	753	853	797	588	580	593	585	637	629	681	673	725	717	769	761	813	805	857	849	640	632	645	637	689	681	733	725	777	769	821	813	865	857	909	901	
	6	484	476	489	481	533	525	577	569	621	613	665	657	753	701	853	745	540	532	545	537	595	587	645	637	695	687	745	737	795	787	853	837	624	616	629	621	687	679	745	737	803	795	861	853	919	911	977	969	668	660	673	665	723	715	773	765	823	815	873	865	923	915	973	965	732	724	737	729	787	779	837	829	887	879	937	929	987	979	1037	1029																	
	8																																																																																																	
	10	668	660	673	665	723	715	773	765	823	815	873	865	923	915	973	965	668	660	673	665	723	715	773	765	823	815	873	865	923	915	973	965	784	776	789	781	847	839	905	897	963	955	1021	1013	1079	1071	1137	1129	784	776	789	781	847	839	905	897	963	955	1021	1013	1079	1071	1137	1129	864	856	869	861	927	919	985	977	1043	1035	1101	1093	1159	1151	1217	1209																	
	12	732	724	737	729	787	779	837	829	887	879	937	929	987	979	1037	1029	732	724	737	729	787	779	837	829	887	879	937	929	987	979	1037	1029	864	856	869	861	927	919	985	977	1043	1035	1101	1093	1159	1151	1217	1209	864	856	869	861	927	919	985	977	1043	1035	1101	1093	1159	1151	1217	1209																																	

Other stroke lengths on request.

Subject to technical modifications without notice (version 08/2004)

MULTIPOWER

type: U
 size: 80 kN (rated force)
 power stroke: up to 28 mm (1")



- ① flow control throttle D1
- ② high pressure connection
- ③ oil refill connection
- ④ throttle D2 „begin power stroke”
- ⑤ oil level indicator
- ⑥ air connection at valve V2

stroke independent values in mm:

Af7	B(1)	B2	C	D	E	Ø H	K	L	M	N	R	Q
70	110	135	6 x M10x16	88	10	45	35	M30x2	25	36	210	248

stroke dependent total length – measurement F:

total stroke length in mm															
32		50		100		150		200		250		300		350	
F	G	F	G	F	G	F	G	F	G	F	G	F	G	F	G

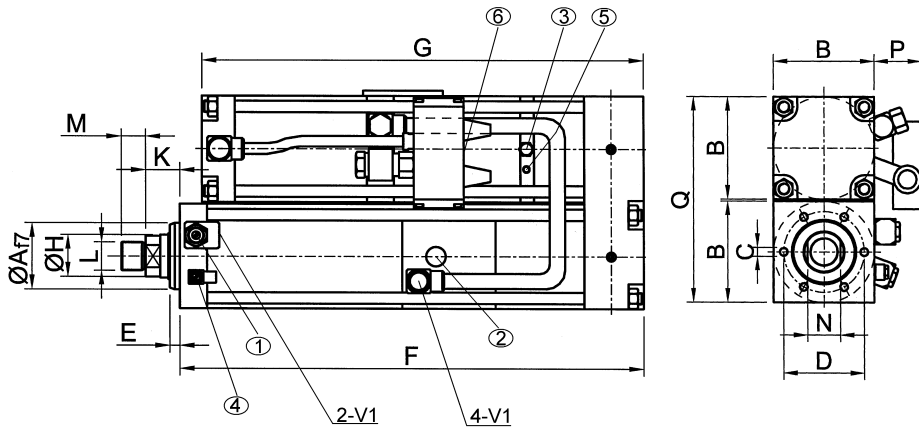
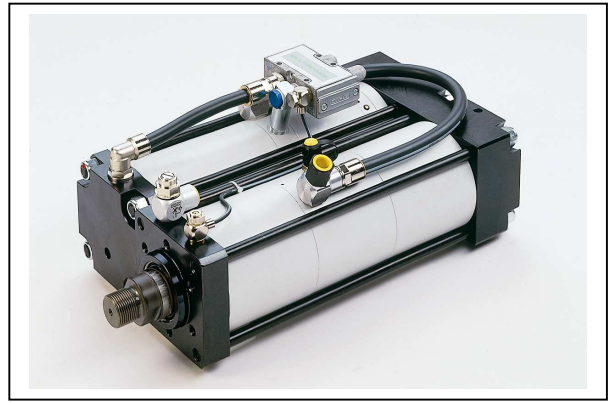
version	POWER STROKE LENGTH in mm	total stroke length in mm															
		20	22	24	26	28	32	50	100	150	200	250	300	350	F	G	
10-bar-version	20	548	540	548	540	570	562	592	584	614	606	651	628	751	650	851	672
	22	574	566	574	566	596	588	618	610	640	632	662	654	751	676	851	698
	24	600	592	600	592	622	614	644	636	666	658	688	680	751	702	851	724
	26	626	618	626	618	648	640	670	662	692	684	714	706	751	728	851	750
	28	652	644	652	644	674	666	696	688	718	710	740	732	762	754	851	776
8-bar-version	20																
	22																
	24																
	26																
	28																
6-bar-version	20	720	712	720	712	750	742	780	772	810	802	840	832	870	862	900	892
	22	760	752	760	752	790	782	820	812	850	842	880	872	910	902	940	932
	24	800	792	800	792	830	822	860	852	890	882	920	912	950	942	980	972
	26																
	28																

Other stroke lengths on request.

Subject to technical modifications without notice (version 08/2004)

MULTIPOWER

type: U
 size: 80 kN (rated force)
 power stroke: up to 12 mm (1/2")



- ① flow control throttle D1
- ② high pressure connection
- ③ oil refill connection
- ④ throttle D2
- ⑤ „begin power stroke“
- ⑥ air connection at valve V2

stroke independent values in mm:

Af7	B(1)	B2	C	D	E	Ø H	K	L	M	N	P	Q
70	110	-	6 x M10x16	88	10	45	35	M30x2	25	36	60	222

stroke dependent total length – measurement F:

total stroke length in mm															
32		50		100		150		200		250		300		350	
F	G	F	G	F	G	F	G	F	G	F	G	F	G	F	G
32	35	42	45	92	95	142	145	192	195	242	245	292	295	342	345

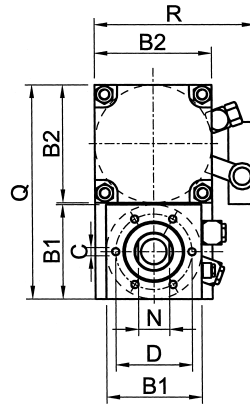
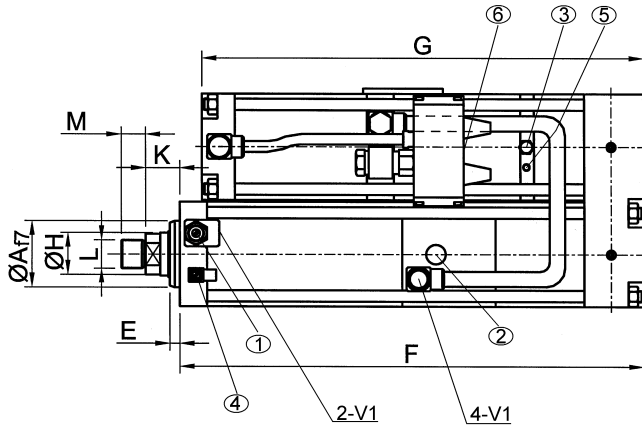
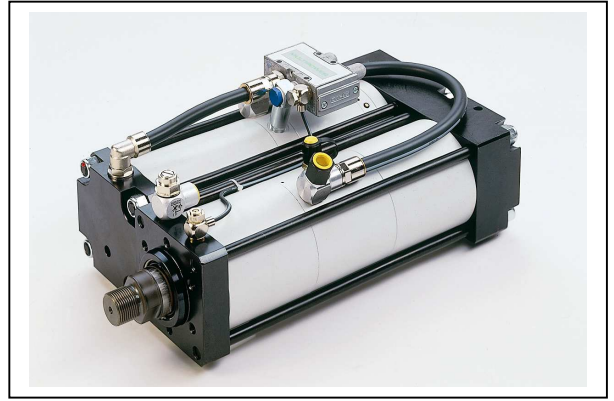
version	POWER STROKE LENGTH in mm	total stroke length in mm																																															
		3	6	8	10	12	3	6	8	10	12	3	6	8	10	12	3	6	8	10	12	3	6	8	10	12																							
10-bar-version	3	358	355	363	360	399	396	445	431	545	466	645	501	745	536	845	571	392	389	397	394	442	439	487	484	545	529	645	574	745	619	845	664	468	465	473	470	524	521	575	572	626	623	677	674	745	725	845	776
	6	419	416	424	421	459	456	494	491	545	526	645	561	745	596	845	631	470	467	475	472	520	517	565	562	610	607	655	652	745	697	845	742	576	573	581	578	632	629	683	680	734	731	785	782	836	833	887	884
	8																																																
	10	499	496	504	501	539	536	574	571	609	606	645	641	745	676	845	711	574	571	579	576	624	621	669	666	714	711	759	756	804	801	849	846	740	737	745	742	796	793	847	844	898	895	949	946	1000	997	1051	1048
	12	539	536	544	541	579	576	614	611	649	646	684	681	745	716	845	751	626	623	631	628	676	673	721	718	766	763	811	808	856	853	901	898	810	807	815	812	866	863	917	914	968	965	1019	1016	1070	1067	1121	1118

Other stroke lengths on request.

Subject to technical modifications without notice (version 08/2004)

MULTIPOWER

type: U
 size: 40 kN (rated force)
 power stroke: up to 28 mm (1")



- ① flow control throttle D1
- ② high pressure connection
- ③ oil refill connection
- ④ throttle D2
- ⑤ „begin power stroke“
- ⑥ air connection at valve V2

stroke independent values in mm:

Af7	B(1)	B2	C	D	E	Ø H	K	L	M	N	R	Q
50	85	110	6 x M8x15	64	10	30	28,5	M22x2	20	24	170	197

stroke dependent total length – measurement F:

total stroke length in mm															
32		50		100		150		200		250		300		350	
F	G	F	G	F	G	F	G	F	G	F	G	F	G	F	G

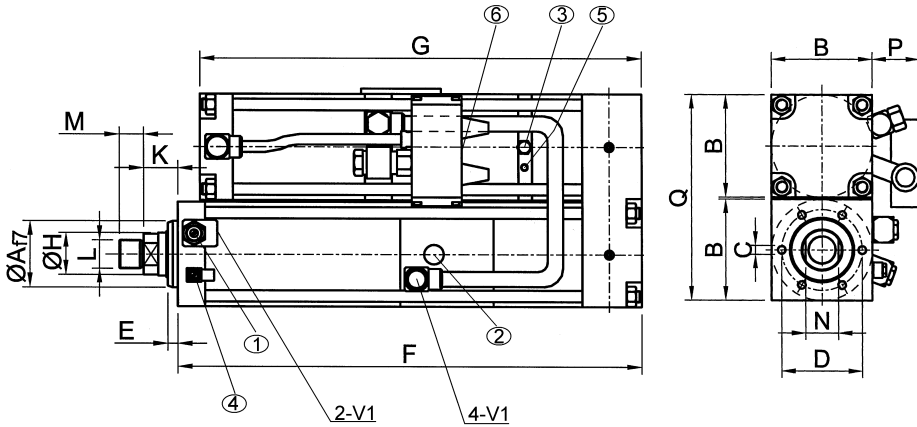
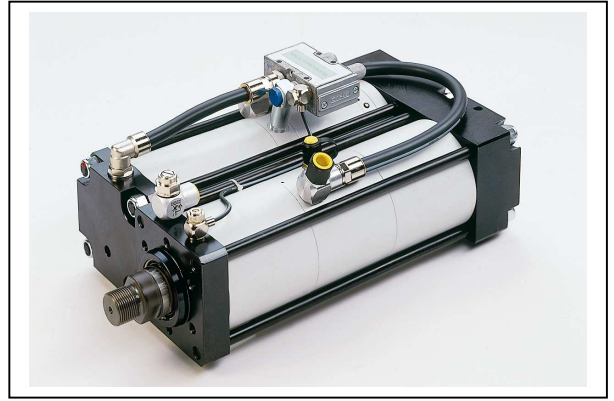
version	POWER STROKE LENGTH in mm	total stroke length in mm													
		20	22	24	26	28	32	50	100	150	200	250	300	350	
10-bar-version	20	474	471	474	471	491	488	508	505	532	522	632	539	732	556
	22														
	24	514	511	514	511	531	528	548	545	565	562	632	579	732	596
	26														
	28	554	551	554	551	571	568	588	585	605	602	632	619	732	636
8-bar-version	20			550	547	569	566	588	585	607	604	632	623	732	642
	22														
	24			606	603	625	622	644	641	663	660	682	679	732	698
	26														
	28														
6-bar-version	20			674	671	697	694	720	717	743	740	766	763	789	786
	22														
	24			754	751	777	774	800	797	823	820	846	843	869	866
	26														
	28														

Other stroke lengths on request.

Subject to technical modifications without notice (version 08/2004)

MULTIPOWER

type: U
 size: 40 kN (rated force)
 power stroke: up to 12 mm (1/2")



- ① flow control throttle D1
- ② high pressure connection
- ③ oil refill connection
- ④ throttle D2
- ⑤ „begin power stroke”
- ⑥ air connection at valve V2

stroke independent values in mm:

Af7	B(1)	B2	C	D	E	Ø H	K	L	M	N	P	Q
50	85	-	6 x M8x15	64	10	30	28,5	M22x2	20	24	45	172

stroke dependent total length – measurement F:

total stroke length in mm															
32		50		100		150		200		250		300		350	
F	G	F	G	F	G	F	G	F	G	F	G	F	G	F	G
326	323	331	328	365	362	432	397	532	432	632	467	732	502		
385	382	390	387	425	422	460	457	532	492	632	527	732	562		
425	422	430	427	465	462	500	497	535	532	632	567	732	602		
465	462	470	467	505	502	540	537	575	572	632	607	732	642		
505	502	510	507	545	542	580	577	615	612	650	647	732	682		

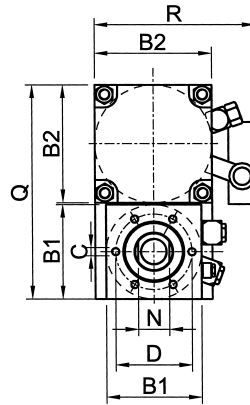
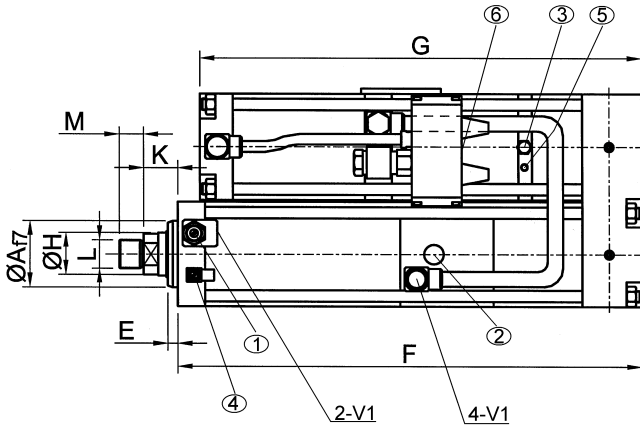
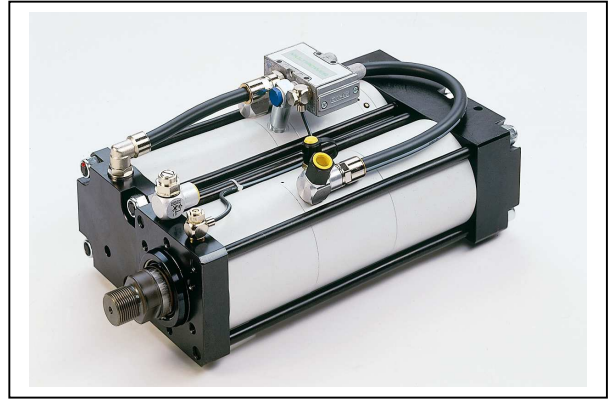
version	POWER STROKE LENGTH in mm	total stroke length in mm																			
		3	6	8	10	12	3	6	8	10	12	3	6	8	10	12	3	6	8	10	12
10-bar-version	3	326	323	331	328	365	362	432	397	532	432	632	467	732	502						
	6	385	382	390	387	425	422	460	457	532	492	632	527	732	562						
	8	425	422	430	427	465	462	500	497	535	532	632	567	732	602						
	10	465	462	470	467	505	502	540	537	575	572	632	607	732	642						
	12	505	502	510	507	545	542	580	577	615	612	650	647	732	682						
8-bar-version	3	381	378	386	383	427	424	468	465	532	506	632	547	732	588						
	6	465	462	470	467	511	508	552	549	593	590	634	631	732	672						
	8																				
	10	577	574	582	579	623	620	664	661	705	702	746	743	787	784						
	12	663	630	638	635	679	676	720	717	761	758	802	799	843	840						
6-bar-version	3	421	418	426	423	477	474	528	525	579	576	632	627	732	678						
	6	529	526	534	531	585	582	636	633	687	684	738	735	789	786						
	8																				
	10	673	670	678	675	729	726	780	777	831	828	882	879	933	930						
	12	745	742	750	747	801	798	852	849	903	900	954	951	1005	1002						

Other stroke lengths on request.

Subject to technical modifications without notice (version 08/2004)

MULTIPOWER

type: U
 size: 20 kN (rated force)
 power stroke: up to 28 mm (1")



- ① flow control throttle D1
- ② high pressure connection
- ③ oil refill connection
- ④ throttle D2
- ⑤ „begin power stroke“
- ⑥ air connection at valve V2

stroke independent values in mm:

Af7	B(1)	B2	C	D	E	Ø H	K	L	M	N	R	Q
40	70	85	6 x M8x12	54	10	20	26	M16x1,5	15	17	130	162

stroke dependent total length – measurement F:

total stroke length in mm															
32		50		100		150		200		250		300		350	
F	G	F	G	F	G	F	G	F	G	F	G	F	G	F	G

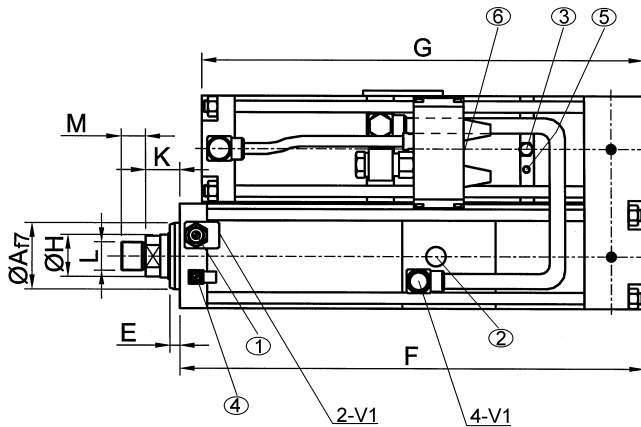
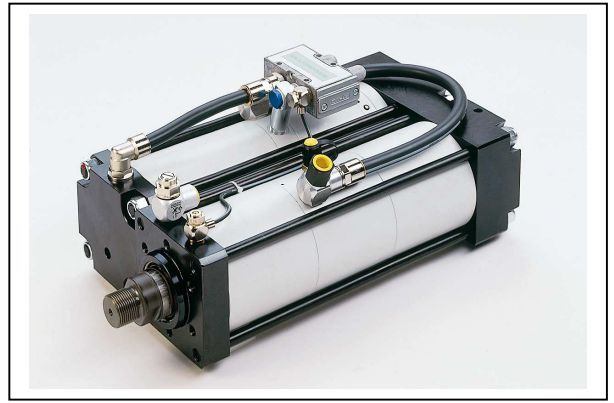
version	POWER STROKE LENGTH in mm	total stroke length in mm																										
		20	22	24	26	28	20	22	24	26	28	20	22	24	26	28	20	22	24	26	28	20	22	24	26	28		
10-bar-version	20						432	429	450	447	468	465	519	483	619	501	719	519										
	22																											
	24						472	469	490	487	508	505	526	523	619	541	719	559										
	26																											
	28																											
8-bar-version	20						540	537	558	555	576	573	594	591	619	609	719	627										
	22																											
	24						596	593	614	611	632	629	650	647	668	665	719	683										
	26																											
	28																											
6-bar-version	20						628	625	646	643	664	661	682	679	700	697	719	715										
	22																											
	24						708	705	726	723	744	741	762	759	780	777	798	795										
	26																											
	28																											

Other stroke lengths on request.

Subject to technical modifications without notice (version 08/2004)

MULTIPOWER

type: U
 size: 20 kN (rated force)
 power stroke: up to 12 mm (1/2")



- ① flow control throttle D1
- ② high pressure connection
- ③ oil refill connection
- ④ throttle D2
- ⑤ „begin power stroke”
- ⑥ air connection at valve V2

stroke independent values in mm:

Af7	B(1)	B2	C	D	E	Ø H	K	L	M	N	P	Q
40	70	-	6 x M8x12	54	10	20	26	M16x1,5	15	17	45	142

stroke dependent total length – measurement F:

total stroke length in mm															
32		50		100		150		200		250		300		350	
F	G	F	G	F	G	F	G	F	G	F	G	F	G	F	G
32	32	50	50	100	100	150	150	200	200	250	250	300	300	350	350

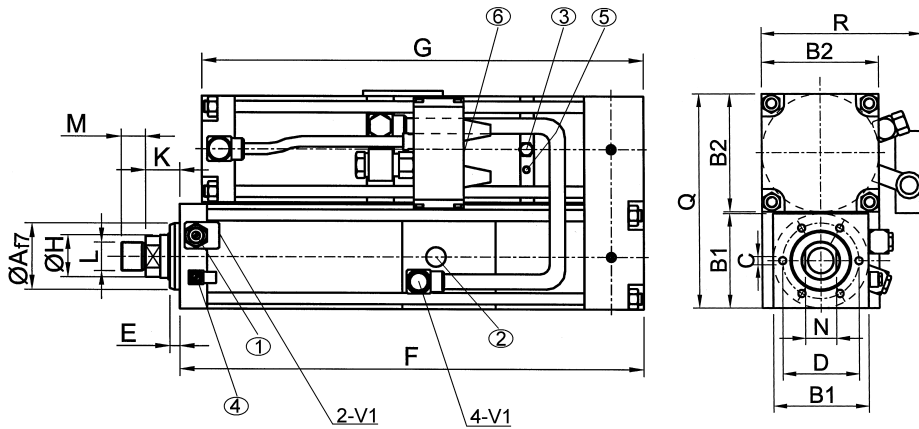
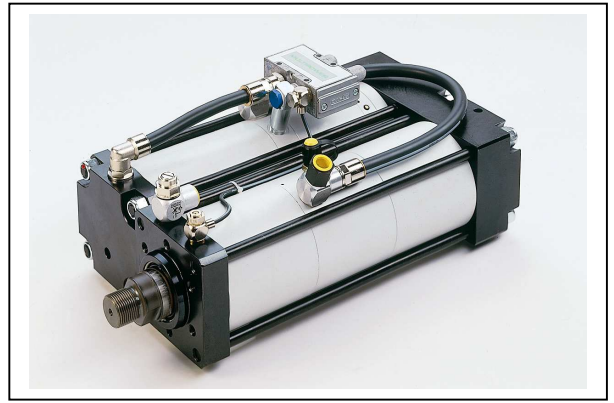
Version	Power Stroke Length in mm	Total Stroke Length in mm																										
		3	6	8	10	12	3	6	8	10	12	3	6	8	10	12	3	6	8	10	12	3	6	8	10	12		
10-bar-version	3	265	262	270	267	304	291	404	315	504	339	604	363	704	387													
	6	307	304	312	309	336	333	404	357	504	381	604	405	704	429													
	8																											
	10	363	360	368	365	392	389	416	413	504	437	604	461	704	485													
	12	391	388	396	393	420	417	444	441	504	465	604	489	704	513													
8-bar-version	3	288	285	293	290	319	316	404	342	504	368	604	394	704	420													
	6	336	333	341	338	367	364	404	390	504	416	604	442	704	468													
	8	368	365	373	370	399	396	425	422	504	448	604	474	704	500													
	10	400	397	405	402	431	428	457	454	504	480	604	506	704	532													
	12	432	429	437	434	463	460	489	486	515	512	604	538	704	564													
6-bar-version	3	336	333	341	338	371	368	404	398	504	428	604	458	704	488													
	6	396	393	401	398	431	428	461	458	504	488	604	518	704	548													
	8																											
	10	476	473	481	478	511	508	541	538	571	568	604	598	704	628													
	12	536	533	541	538	571	568	601	598	631	628	661	658	704	688													

Other stroke lengths on request.

Subject to technical modifications without notice (version 08/2004)

MULTIPOWER

type: U
 size: 10 kN (rated force)
 power stroke: up to 24 mm (1")



- ① flow control throttle D1
- ② high pressure connection
- ③ oil refill connection
- ④ throttle D2
- ⑤ „begin power stroke“
- ⑥ air connection at valve V2

stroke independent values in mm:

Af7	B(1)	B2	C	D	E	Ø H	K	L	M	N	R	Q
30	50	70	6 x M6x11	40	10	16	24	M12x1,5	15	14	115	122

stroke dependent total length – measurement F:

total stroke length in mm															
32		50		100		150		200		250		300		350	
F	G	F	G	F	G	F	G	F	G	F	G	F	G	F	G

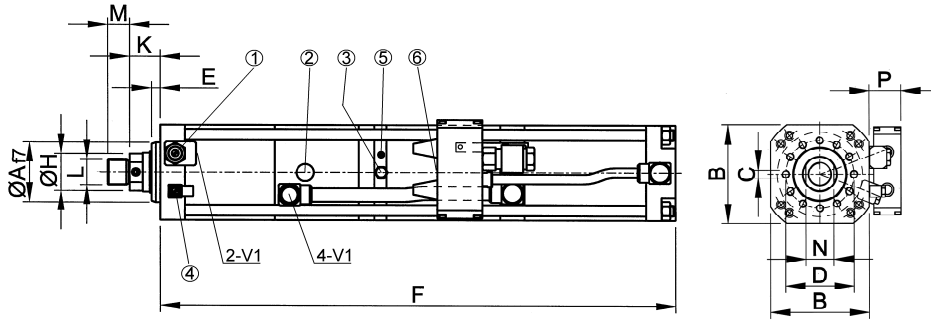
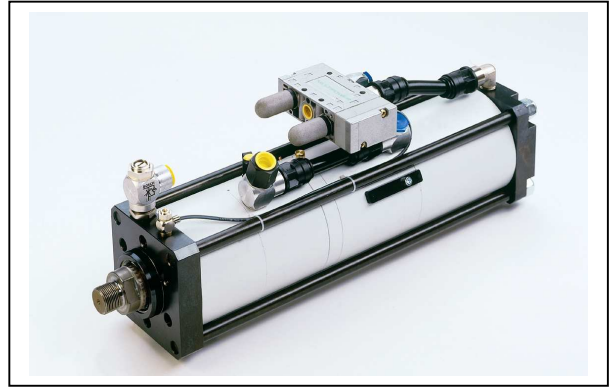
Version	Power Stroke Length in mm	Total Stroke Length in mm															
		32	50	100	150	200	250	300	350	32	50	100	150	200	250	300	350
10-bar-version	6																
	8																
	12	299	296	299	296	312	309	399	322	499	335	599	348				
	20	371	368	371	368	384	381	399	394	499	407	599	420				
8-bar-version	3																
	6																
	8																
	10																
	12																
6-bar-version	3																
	6	291	288	291	288	312	309	399	330	499	351	599	372				
	8																
	10																
	12	375	372	375	372	396	393	417	414	499	435	599	456				

Other stroke lengths on request.

Subject to technical modifications without notice (version 08/2004)

MULTIPOWER

type: **G**
 size: **750 kN (rated force)**
 power stroke: **up to 12 mm (1/2")**



- ① flow control throttle D1
- ② high pressure connection
- ③ oil refill connection
- ④ throttle D2
- ⑤ „begin power stroke”
- ⑥ oil level indicator
- ⑦ air connection at valve V2

stroke independent values in mm:

Af7	B	C	D	E	Ø H	K	L	M	N	P
150	270	12 x M24x40	200	25	100	60	M64x2	60	85	85

stroke dependent total length – measurement F:

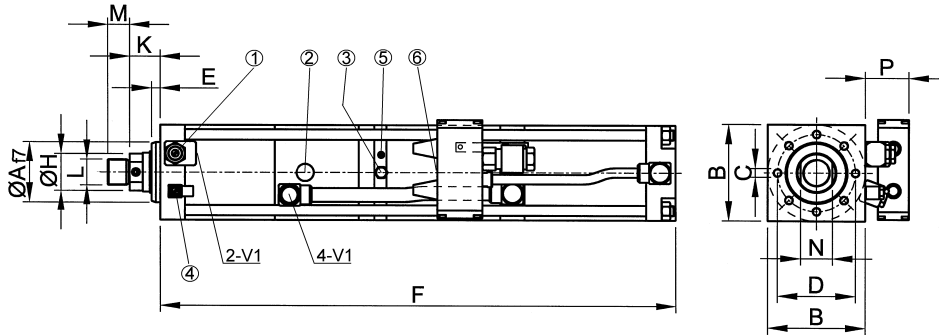
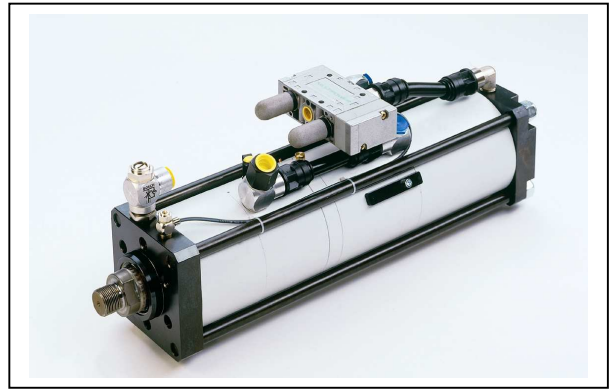
total stroke length in mm					
32	50	100	150	200	250
F	F	F	F	F	F

10-bar-version (100 % of rated force at 10 bar air pressure)	power stroke length in mm	3							
		6							
		8							
		10							
		12							
8-bar-version (100 % of rated force at 8 bar air pressure)	power stroke length in mm	3							
		6							
		8							
		10							
		12							
6-bar-version (100 % of rated force at 6 bar air pressure)	power stroke length in mm	3							
		6							
		8							
		10							
		12							

Other stroke lengths on request.

MULTIPOWER

type: **G**
 size: **500 kN (rated force)**
 power stroke: **up to 12 mm (1/2")**



- ① flow control throttle D1
- ② high pressure connection
- ③ oil refill connection
- ④ throttle D2
- ⑤ „begin power stroke“
- ⑥ air connection at valve V2

stroke independent values in mm:

Af7	B	C	D	E	Ø H	K	L	M	N	P
115	200	8 x M20x30	150	12	63	39	M42x2	40	55	85

stroke dependent total length – measurement F:

total stroke length in mm					
32	50	100	150	200	250
F	F	F	F	F	F

10-bar-version (100 % of rated force at 10 bar air pressure)	power stroke length in mm	3	775	835	928	1080	1235	1390
		6	829	889	982	1134	1289	1444
		8	869	929	1022	1174	1329	1484
		10	909	969	1062	1214	1369	1524
		12	949	1009	1102	1254	1409	1564

8-bar-version (100 % of rated force at 8 bar air pressure)	power stroke length in mm	3	800	863	961	1121	1284	1447
		6	874	937	1035	1195	1358	1521
		8						
		10						
		12	1041	1084	1182	1342	1505	1668

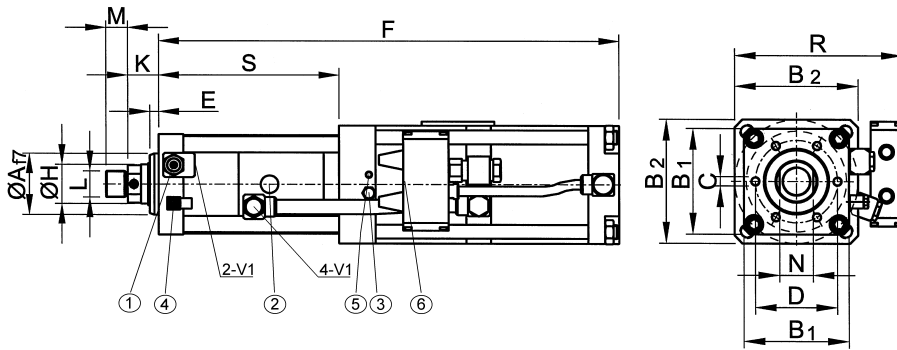
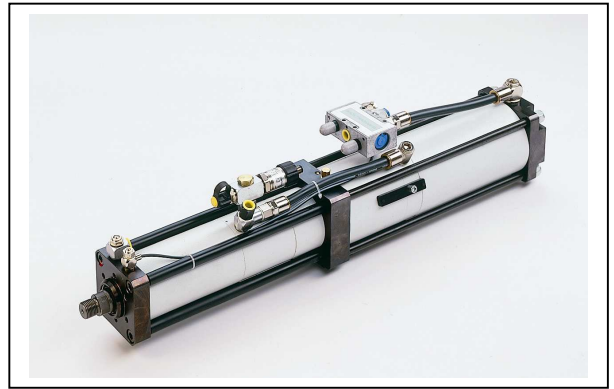
6-bar-version (100 % of rated force at 6 bar air pressure)	power stroke length in mm	3	839	906	1009	1178	1350	1522
		6	934	1001	1104	1273	1445	1617
		8						
		10	1116	1163	1230	1399	1571	1743
		12	1244	1291	1354	1463	1635	1807

Other stroke lengths on request.

Subject to technical modifications without notice (version 08/2004)

MULTIPOWER

type: **G**
 size: **300 kN (rated force)**
 power stroke: **up to 28 mm (1")**



- ① flow control throttle D1
- ② high pressure connection
- ③ oil refill connection
- ④ throttle D2
- ⑤ „begin power stroke“
- ⑥ oil level indicator
- ⑦ air connection at valve V2

stroke independent values in mm:

Af7	B 1	B 2	C	D	E	Ø H	K	L	M	N	R
100	190	190	6 xM20x30	132	13	56	37	M39x2	35	50	275

stroke dependent total length – measurement F:

total stroke length in mm											
32		50		100		150		200		250	
F	S	F	S	F	S	F	S	F	S	F	S

10-bar-version <small>(100 % of rated force at 10 bar air pressure)</small>	power stroke length in mm	20						1076	397	1210	497	1344	597	1478	697	
		22														
		24							1126	397	1260	497	1394	597	1528	697
		26														
		28							1176	397	1310	497	1444	597	1578	697

8-bar-version <small>(100 % of rated force at 8 bar air pressure)</small>	power stroke length in mm	20						1152	397	1291	497	1430	597	1569	697
		22						1183	397	1322	497	1461	597	1600	697
		24						1214	397	1353	497	1492	597	1631	697
		26						1275	427	1384	497	1523	597	1662	697
		28						1336	457	1415	497	1554	597	1693	697

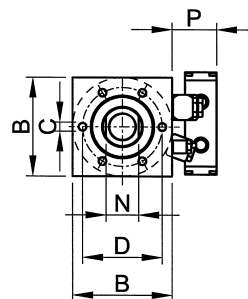
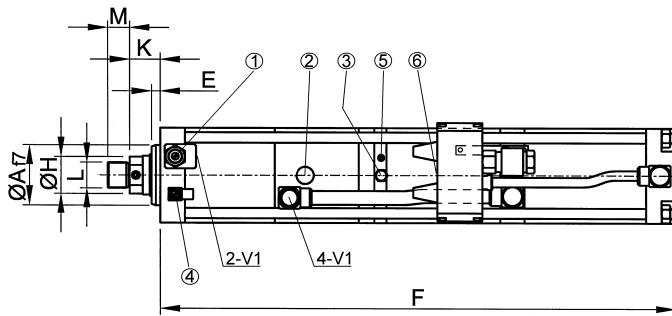
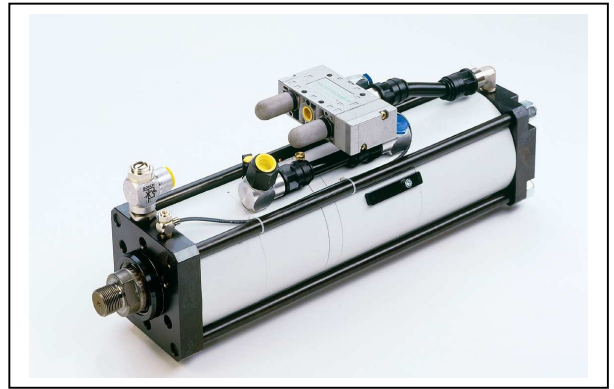
6-bar-version <small>(100 % of rated force at 6 bar air pressure)</small>	power stroke length in mm	20						1312	447	1408	497	1554	597	1700	697	
		22														
		24														
		26														
		28														

Other stroke lengths on request.

Subject to technical modifications without notice (version 08/2004)

MULTIPOWER

type: **G**
 size: **300 kN (rated force)**
 power stroke: **up to 12 mm (1/2")**



- ① flow control throttle D1
- ② high pressure connection
- ③ oil refill connection
- ④ throttle D2
- ⑤ „begin power stroke“
- ⑥ air connection at valve V2

stroke independent values in mm:

Af7	B	C	D	E	Ø H	K	L	M	N	P
100	175	6 x M20x30	132	13	56	42	M39x2	35	50	85

stroke dependent total length – measurement F:

total stroke length in mm					
32	50	100	150	200	250
F	F	F	F	F	F

10-bar-version (100 % of rated force at 10 bar air pressure)	power stroke length in mm	3	682	710	859	1003	1152	1296
		6	724	752	901	1045	1194	1338
		8	755	783	932	1076	1225	1369
		10	786	814	963	1107	1256	1400
		12	817	845	994	1138	1287	1431

8-bar-version (100 % of rated force at 8 bar air pressure)	power stroke length in mm	3	700	738	893	1043	1198	1348	
		6	760	798	953	1103	1258	1408	
		8							
		10							
		12	880	918	1073	1223	1378	1528	

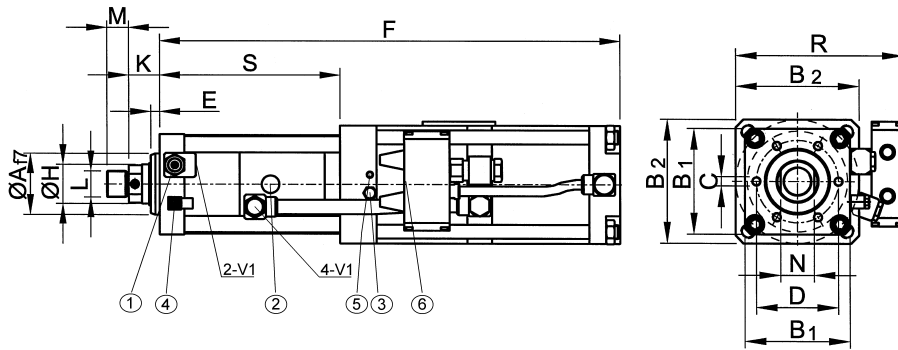
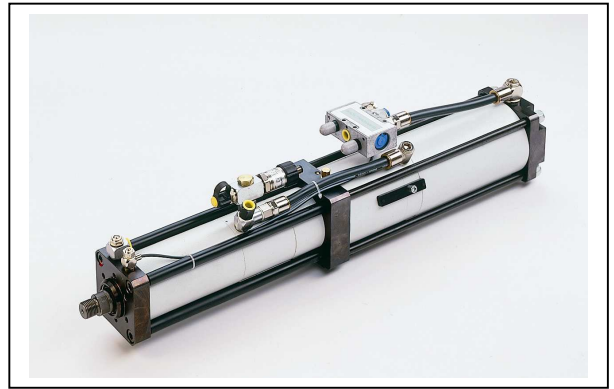
6-bar-version (100 % of rated force at 6 bar air pressure)	power stroke length in mm	3	720	761	922	1078	1239	1395	
		6	793	834	995	1151	1312	1468	
		8							
		10							
		12	1005	1048	1141	1297	1458	1614	

Other stroke lengths on request.

Subject to technical modifications without notice (version 08/2004)

MULTIPOWER

type: **G**
 size: **150 kN (rated force)**
 power stroke: **up to 28 mm (1")**



- ① flow control throttle D1
- ② high pressure connection
- ③ oil refill connection
- ④ throttle D2
- ⑤ „begin power stroke“
- ⑥ oil level indicator
- ⑦ air connection at valve V2

stroke independent values in mm:

Af7	B 1	B 2	C	D	E	Ø H	K	L	M	N	R
75	140	170	6 x M16x25	100	15	50	36	M30x2	25	41	255

stroke dependent total length –measurement F:

total stroke length in mm											
32		50		100		150		200		250	
F	S	F	S	F	S	F	S	F	S	F	S

10-bar-version (100 % of rated force at 10 bar air pressure)	power stroke length in mm	20			749	246	876	346	1003	446	1130	546	1257	646
		22			764	246	891	346	1018	446	1145	546	1272	646
		24			779	246	906	346	1033	446	1160	546	1287	646
		26												
		28			809	246	936	346	1063	446	1190	546	1317	646

8-bar-version (100 % of rated force at 8 bar air pressure)	power stroke length in mm	20			797	246	928	346	1059	446	1190	546	1321	646
		22			817	246	948	346	1079	446	1210	546	1341	646
		24			837	246	968	346	1099	446	1230	546	1361	646
		26												
		28			897	266	1008	346	1139	446	1270	546	1401	646

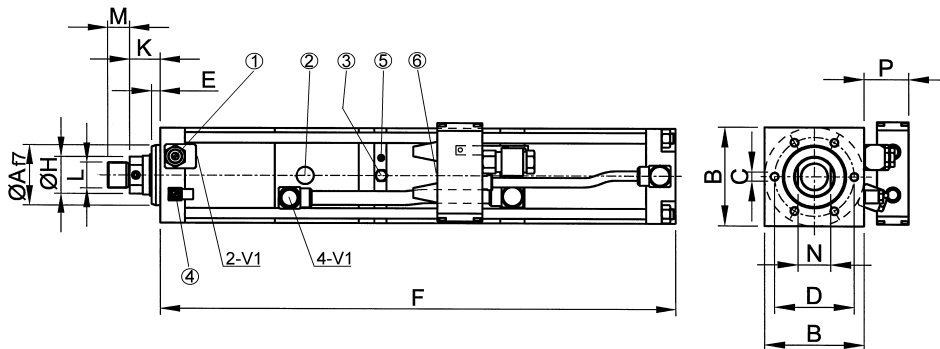
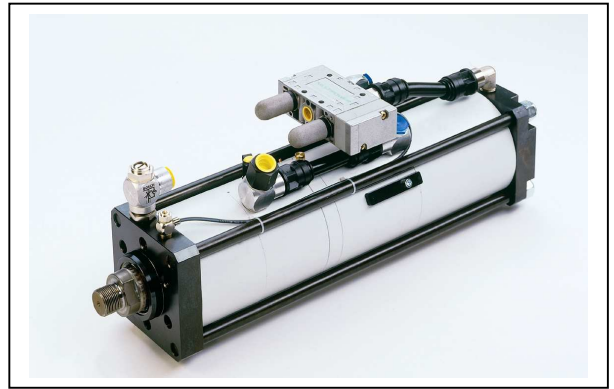
6-bar-version (100 % of rated force at 6 bar air pressure)	power stroke length in mm	20			842	246	977	346	1112	446	1247	546	1382	646
		22			877	256	1002	346	1137	446	1272	546	1407	646
		24			927	281	1027	346	1162	446	1297	546	1432	646
		26												
		28			1067	351	1077	346	1212	446	1347	546	1482	646

Other stroke lengths on request.

Subject to technical modifications without notice (version 08/2004)

MULTIPOWER

type: **G**
 size: **150 kN (rated force)**
 power stroke: **up to 12 mm (1/2")**



- ① flow control throttle D1
- ② high pressure connection
- ③ oil refill connection
- ④ throttle D2
- ⑤ „begin power stroke“
- ⑥ oil level indicator
- ⑦ air connection at valve V2

stroke independent values in mm:

Af7	B	C	D	E	Ø H	K	L	M	N	P
75	135	6 x M16x25	100	15	50	36	M30x2	25	41	75

stroke dependent total length – measurement F:

total stroke length in mm					
32	50	100	150	200	250
F	F	F	F	F	F

10-bar-version (100 % of rated force at 10 bar air pressure)	power stroke length in mm	3	528	569	707	845	983	1121
		6	564	605	743	881	1019	1157
		8	588	629	767	905	1043	1181
		10	612	653	791	929	1067	1205
		12	636	677	815	953	1091	1229

8-bar-version (100 % of rated force at 8 bar air pressure)	power stroke length in mm	3	538	589	731	873	1015	1157
		6	583	634	776	918	1060	1202
		8						
		10						
		12	673	724	866	1008	1150	1292

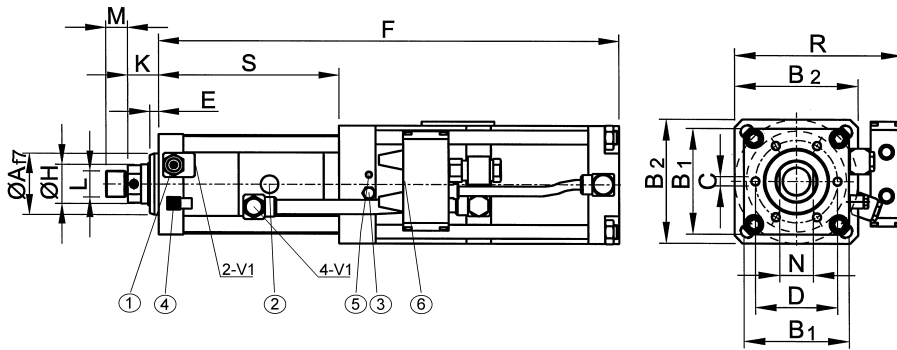
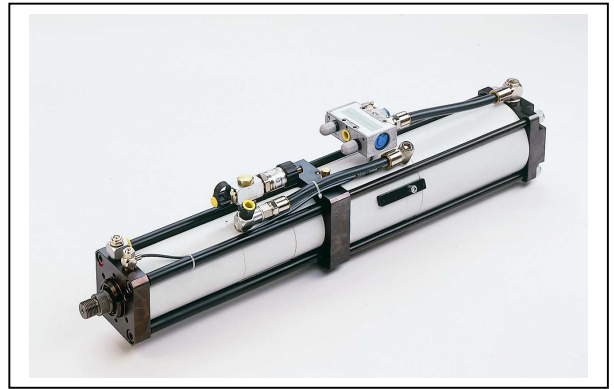
6-bar-version (100 % of rated force at 6 bar air pressure)	power stroke length in mm	3	558	610	759	908	1057	1206
		6	614	666	815	964	1113	1262
		8	645	704	853	1002	1151	1300
		10	682	741	890	1039	1188	1337
		12	737	778	927	1076	1225	1374

Other stroke lengths on request.

Subject to technical modifications without notice (version 08/2004)

MULTIPOWER

type: **G**
 size: **80 kN (rated force)**
 power stroke: **up to 28 mm (1")**



- ① flow control throttle D1
- ② high pressure connection
- ③ oil refill connection
- ④ throttle D2
- ⑤ „begin power stroke“
- ⑥ oil level indicator
- ⑦ air connection at valve V2

stroke independent values in mm:

Af7	B 1	B 2	C	D	E	Ø H	K	L	M	N	R
70	115	135	6 x M10x16	88	10	45	35	M30x2	25	36	210

stroke dependent total length – measurement F:

total stroke length in mm											
32		50		100		150		200		250	
F	S	F	S	F	S	F	S	F	S	F	S

10-bar-version (100 % of rated force at 10 bar air pressure)	power stroke length in mm	20			638	228	738	308	858	408	978	508	1098	608	
		22				650	228	750	308	870	408	990	508	1110	608
		24				662	228	762	308	882	408	1002	508	1122	608
		26													
		28				686	228	786	308	906	408	1026	508	1146	608

8-bar-version (100 % of rated force at 8 bar air pressure)	power stroke length in mm	20			669	228	772	308	895	408	1018	508	1141	608	
		22													
		24				699	228	802	308	925	408	1048	508	1171	608
		26													
		28				729	228	832	308	955	408	1078	508	1201	608

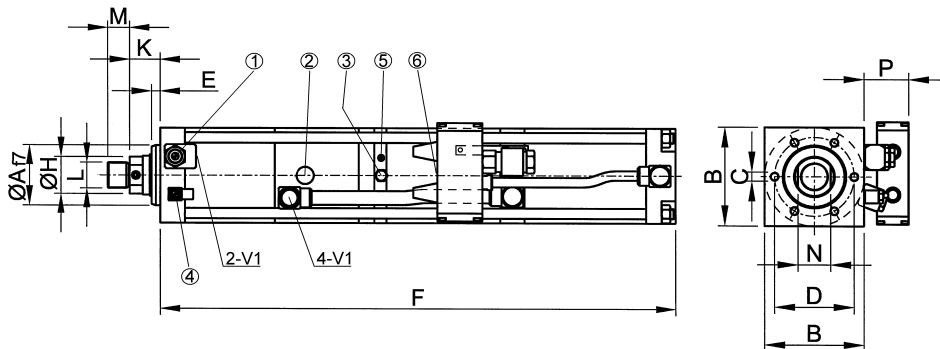
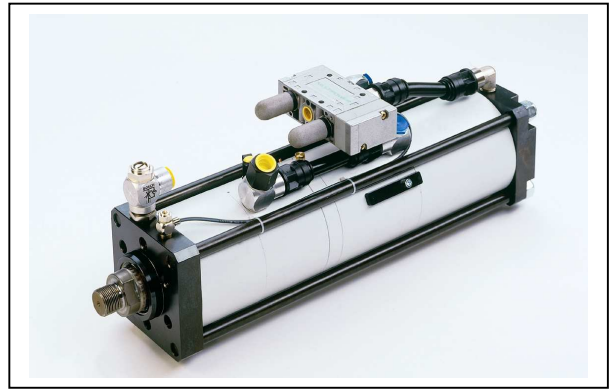
6-bar-version (100 % of rated force at 6 bar air pressure)	power stroke length in mm	20			714	228	821	308	948	408	1075	508	1202	608	
		22													
		24				752	228	859	308	986	408	1113	508	1240	608
		26													
		28				810	248	897	308	1024	408	1151	508	1278	608

Other stroke lengths on request.

Subject to technical modifications without notice (version 08/2004)

MULTIPOWER

type: **G**
 size: **80 kN (rated force)**
 power stroke: **up to 12 mm (1/2")**



- ① flow control throttle D1
- ② high pressure connection
- ③ oil refill connection
- ④ throttle D2
- ⑤ „begin power stroke“
- ⑥ oil level indicator
- ⑦ air connection at valve V2

stroke independent values in mm:

Af7	B	C	D	E	Ø H	K	L	M	N	P
70	110	6 x M10x16	88	10	45	35	M30x2	25	36	60

stroke dependent total length – measurement F:

total stroke length in mm					
32	50	100	150	200	250
F	F	F	F	F	F

10-bar-version (100 % of rated force at 10 bar air pressure)	power stroke length in mm	3	495	536	668	800	932	1064
		6	523	564	696	828	960	1092
		8	542	583	715	847	979	1111
		10	561	602	734	866	998	1130
		12	580	621	753	885	1017	1149

8-bar-version (100 % of rated force at 8 bar air pressure)	power stroke length in mm	3	513	554	691	828	965	1102	
		6	550	591	728	865	1002	1139	
		8							
		10	600	641	778	915	1052	1189	
		12	625	666	803	940	1077	1214	

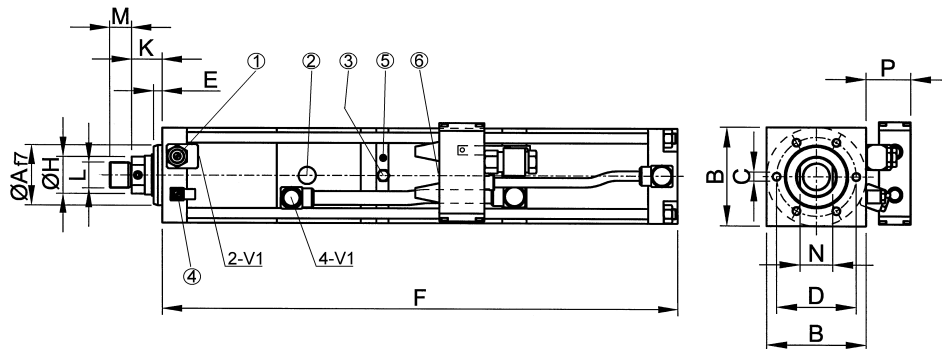
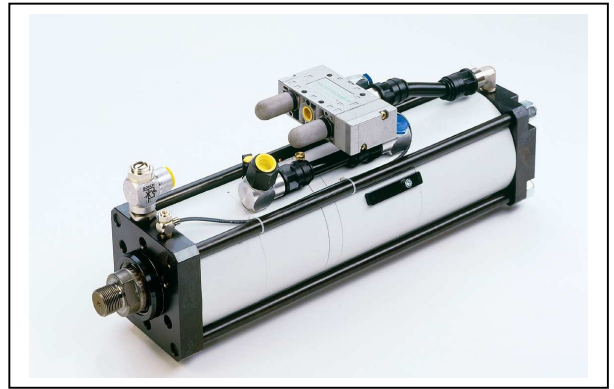
6-bar-version (100 % of rated force at 6 bar air pressure)	power stroke length in mm	3	528	579	724	869	1014	1159	
		6	579	630	775	920	1065	1210	
		8	614	665	810	955	1100	1245	
		10							
		12	681	732	877	1022	1167	1312	

Other stroke lengths on request.

Subject to technical modifications without notice (version 08/2004)

MULTIPOWER

type: **G**
 size: **60 kN (rated force)**
 power stroke: **up to 12 mm (1/2")**



- ① flow control throttle D1
- ② high pressure connection
- ③ oil refill connection
- ④ throttle D2
- ⑤ „begin power stroke“
- ⑥ oil level indicator
- ⑦ air connection at valve V2

stroke independent values in mm:

Af7	B	C	D	E	Ø H	K	L	M	N	P
60	100	6 x M10x16	78	10	35	28,5	M24x2	20	30	60

stroke dependent total length – measurement F:

total stroke length in mm					
32	50	100	150	200	250
F	F	F	F	F	F

10-bar-version (100 % of rated force at 10 bar air pressure)	power stroke length in mm	3	498	545	677	809	941	1073
		6	528	575	707	839	971	1103
		8	548	595	727	859	991	1123
		10	568	615	747	879	1011	1143
		12	588	635	767	899	1031	1163

8-bar-version (100 % of rated force at 8 bar air pressure)	power stroke length in mm	3	517	566	704	842	980	1118
		6	559	608	746	884	1022	1160
		8	587	636	774	912	1050	1188
		10	615	664	802	940	1078	1216
		12	643	692	830	968	1106	1244

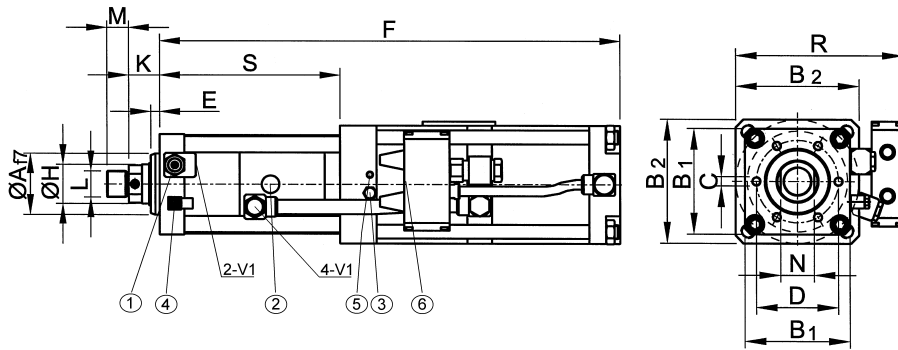
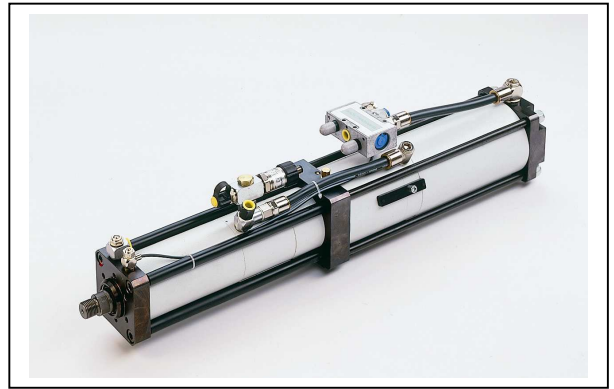
6-bar-version (100 % of rated force at 6 bar air pressure)	power stroke length in mm	3	547	600	748	896	1044	1192
		6	607	660	808	956	1104	1252
		8	647	700	848	996	1144	1292
		10	687	740	888	1036	1184	1332
		12		795	928	1076	1224	1372

Other stroke lengths on request.

Subject to technical modifications without notice (version 11/2004)

MULTIPOWER

type: **G**
 size: **40 kN (rated force)**
 power stroke: **up to 28 mm (1")**



- ① flow control throttle D1
- ② high pressure connection
- ③ oil refill connection
- ④ throttle D2
- ⑤ „begin power stroke“
- ⑥ oil level indicator
- ⑦ air connection at valve V2

stroke independent values in mm:

Af7	B 1	B 2	C	D	E	Ø H	K	L	M	N	R
50	95	110	6 x M8x15	64	10	30	28,5	M22x2	20	24	170

stroke dependent total length – measurement F:

total stroke length in mm											
32		50		100		150		200		250	
F	S	F	S	F	S	F	S	F	S	F	S

10-bar-version <small>(100 % of rated force at 10 bar air pressure)</small>	power stroke length in mm	20			565	208	681	308	797	408	913	508	1029	608	
		22			575	208	691	308	807	408	923	508	1039	608	
		24			585	208	701	308	817	408	933	508	1049	608	
		26													
		28			605	208	721	308	837	408	953	508	1069	608	

8-bar-version <small>(100 % of rated force at 8 bar air pressure)</small>	power stroke length in mm	20			612	208	739	308	866	408	993	508	1120	608	
		22													
		24			634	208	761	308	888	408	1015	508	1142	608	
		26													
		28			660	208	787	308	914	408	1041	508	1168	608	

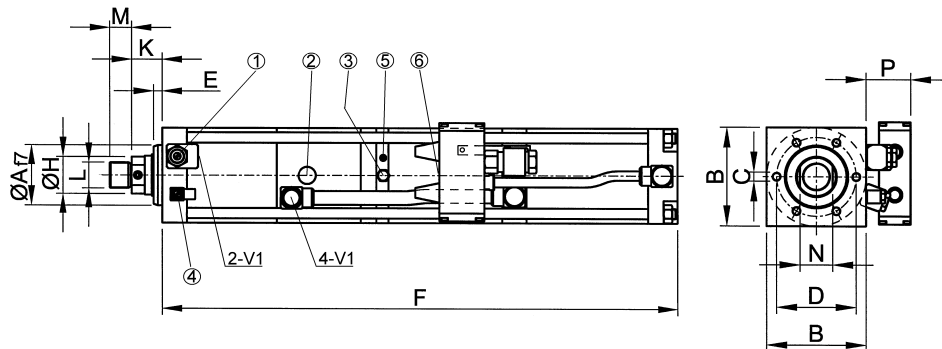
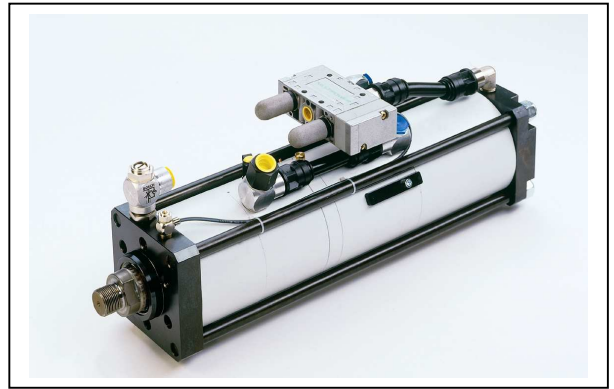
6-bar-version <small>(100 % of rated force at 6 bar air pressure)</small>	power stroke length in mm	20			653	208	776	308	899	408	1022	508	1145	608	
		22			671	208	794	308	917	408	1040	508	1163	608	
		24			689	208	812	308	935	408	1058	508	1181	608	
		26													
		28			745	228	848	308	971	408	1094	508	1217	608	

Other stroke lengths on request.

Subject to technical modifications without notice (version 08/2004)

MULTIPOWER

type: **G**
 size: **40 kN (rated force)**
 power stroke: **up to 12 mm (1/2")**



- ① flow control throttle D1
- ② high pressure connection
- ③ oil refill connection
- ④ throttle D2
- ⑤ „begin power stroke“
- ⑥ air connection at valve V2

stroke independent values in mm:

Af7	B	C	D	E	Ø H	K	L	M	N	P
50	85	6 x M8x15	64	10	30	28,5	M22x2	20	24	45

stroke dependent total length – measurement F:

total stroke length in mm					
32	50	100	150	200	250
F	F	F	F	F	F

10-bar-version (100 % of rated force at 10 bar air pressure)	power stroke length in mm	3	455	496	626	756	886	1016
		6	482	523	653	783	913	1043
		8	500	541	671	801	931	1061
		10	518	559	689	819	949	1079
		12	536	577	707	837	967	1097

8-bar-version (100 % of rated force at 8 bar air pressure)	power stroke length in mm	3	479	520	657	794	931	1068
		6	518	559	696	833	970	1107
		8						
		10						
		12	592	633	770	907	1044	1181

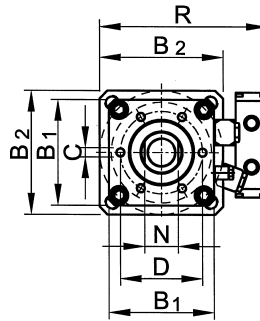
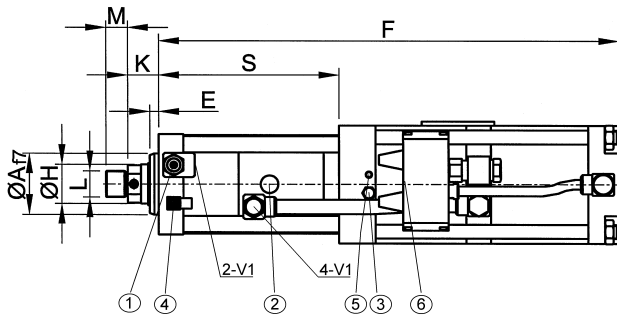
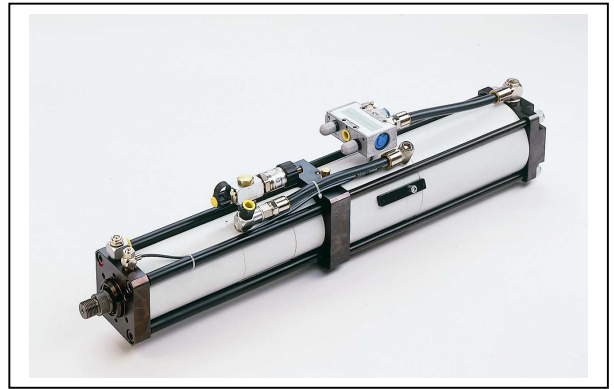
6-bar-version (100 % of rated force at 6 bar air pressure)	power stroke length in mm	3	494	535	678	821	964	1107
		6	541	582	725	868	1011	1154
		8						
		10						
		12	653	676	819	962	1105	1248

Other stroke lengths on request.

Subject to technical modifications without notice (version 08/2004)

MULTIPOWER

type: **G**
 size: **20 kN (rated force)**
 power stroke: **up to 28 mm (1")**



- ① flow control throttle D1
- ② high pressure connection
- ③ oil refill connection
- ④ throttle D2
- ⑤ „begin power stroke“
- ⑥ oil level indicator
- ⑦ air connection at valve V2

stroke independent values in mm:

Af7	B 1	B 2	C	D	E	Ø H	K	L	M	N	R
40	75	85	6 x M8x12	54	10	20	26	M16x1,5	15	17	130

stroke dependent total length – measurement F:

total stroke length in mm											
32		50		100		150		200		250	
F	S	F	S	F	S	F	S	F	S	F	S

10-bar-version (100 % of rated force at 10 bar air pressure)	power stroke length in mm	20	507	174	525	192	638	287	756	387	874	487	992	587
		22	515	174	533	192	646	287	764	387	882	487	1000	587
		24	523	174	541	192	654	287	772	387	890	487	1008	587
		26												
		28												

8-bar-version (100 % of rated force at 8 bar air pressure)	power stroke length in mm	20	551	174	569	192	684	287	804	387	924	487	1044	587
		22	563	174	581	192	696	287	816	387	936	487	1056	587
		24	575	174	593	192	708	287	828	387	948	487	1068	587
		26												
		28												

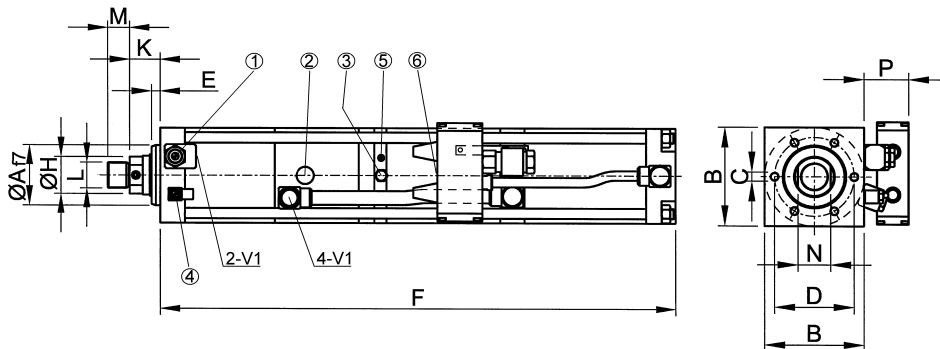
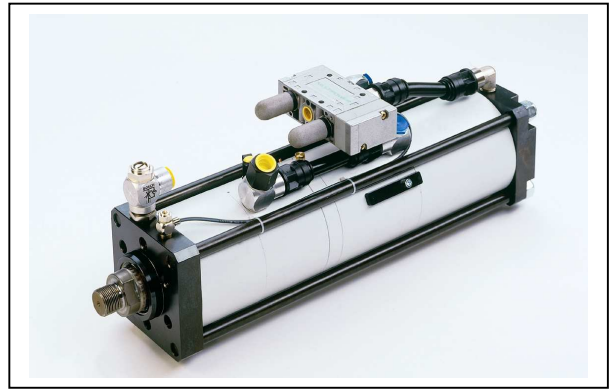
6-bar-version (100 % of rated force at 6 bar air pressure)	power stroke length in mm	20			604	192	721	287	843	387	965	487	1087	587
		22			619	192	736	287	858	387	980	487	1102	587
		24			634	192	751	287	873	387	995	487	1117	587
		26												
		28												

Other stroke lengths on request.

Subject to technical modifications without notice (version 08/2004)

MULTIPOWER

type: **G**
 size: **20 kN (rated force)**
 power stroke: **up to 12 mm (1/2")**



- ① flow control throttle D1
- ② high pressure connection
- ③ oil refill connection
- ④ throttle D2 „begin power stroke“
- ⑤ oil level indicator
- ⑥ air connection at valve V2

stroke independent values in mm:

Af7	B	C	D	E	Ø H	K	L	M	N	P
40	70	6 x M8x12	54	10	20	26	M16x1,5	15	17	45

stroke dependent total length – measurement F:

total stroke length in mm					
32	50	100	150	200	250
F	F	F	F	F	F

10-bar-version (100 % of rated force at 10 bar air pressure)	power stroke length in mm	3	396	437	557	677	797	917
		6	414	455	575	695	815	935
		8	426	467	587	707	827	947
		10	438	479	599	719	839	959
		12	450	491	611	731	851	971
8-bar-version (100 % of rated force at 8 bar air pressure)	power stroke length in mm	3	409	450	573	696	819	942
		6	431	472	595	718	841	964
		8						
		10						
		12	477	518	641	764	887	1010
6-bar-version (100 % of rated force at 6 bar air pressure)	power stroke length in mm	3	418	459	586	713	840	967
		6	447	488	615	742	869	996
		8						
		10						
		12	505	546	673	800	927	1054

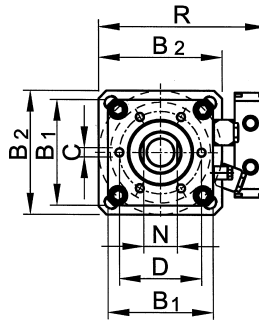
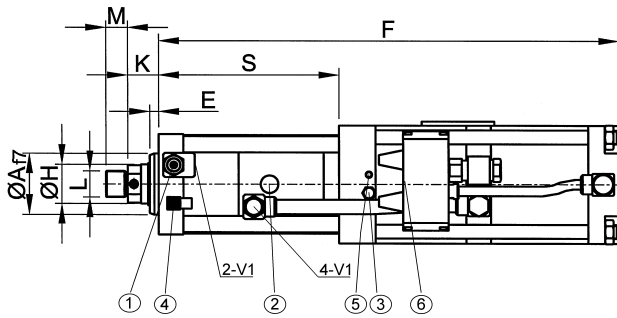
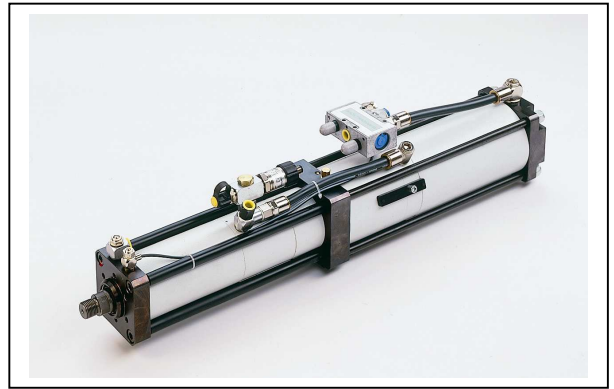
Other stroke lengths on request.

Subject to technical modifications without notice (version 08/2004)

08/2004

MULTIPOWER

type: **G**
 size: **10 kN (rated force)**
 power stroke: **up to 28 mm (1")**



- ① flow control throttle D1
- ② high pressure connection
- ③ oil refill connection
- ④ throttle D2
- ⑤ „begin power stroke“
- ⑥ oil level indicator
- ⑦ air connection at valve V2

stroke independent values in mm:

Af7	B 1	B 2	C	D	E	Ø H	K	L	M	N	R
30	50	70	6 x M6x11	40	10	16	24	M12x1,5	15	14	115

stroke dependent total length – measurement F:

total stroke length in mm											
32		50		100		150		200		250	
F	S	F	S	F	S	F	S	F	S	F	S

10-bar-version (100 % of rated force at 10 bar air pressure)	power stroke length in mm	20																						
		22																						
		24																						
		26																						
		28																						

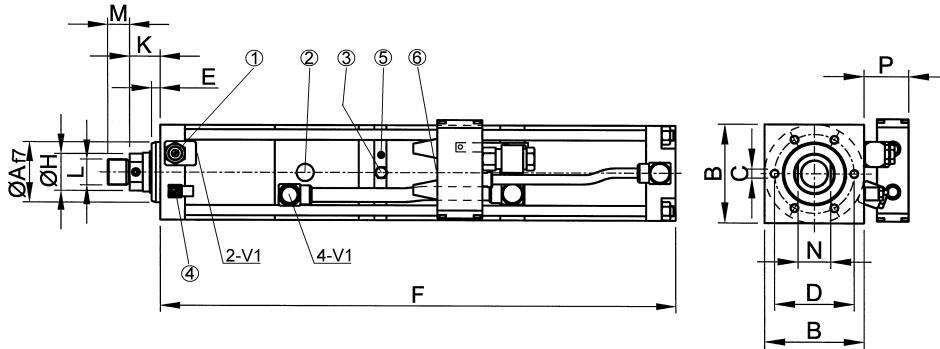
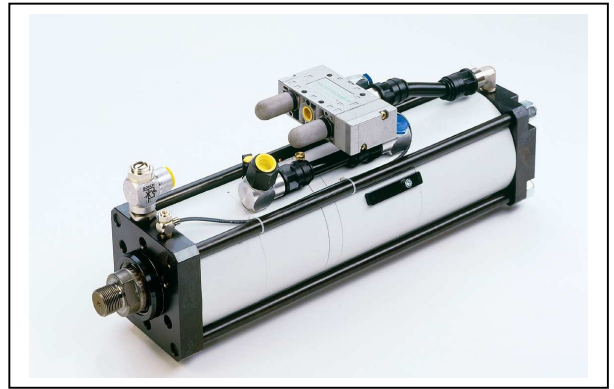
8-bar-version (100 % of rated force at 8 bar air pressure)	power stroke length in mm	20																						
		22																						
		24																						
		26																						
		28																						

6-bar-version (100 % of rated force at 6 bar air pressure)	power stroke length in mm	20																						
		22																						
		24																						
		26																						
		28																						

Other stroke lengths on request.

MULTIPOWER

type: **G**
 size: **10 kN (rated force)**
 power stroke: **up to 12 mm (1/2")**



- ① flow control throttle D1
- ② high pressure connection
- ③ oil refill connection
- ④ throttle D2
- ⑤ „begin power stroke”
- ⑥ air connection at valve V2

stroke independent values in mm:

Af7	B	C	D	E	Ø H	K	L	M	N	P
30	50	6 x M6x11	40	10	16	24	M12x1,5	15	14	45

stroke dependent total length – measurement F:

total stroke length in mm					
32	50	100	150	200	250
F	F	F	F	F	F

10-bar-version <small>(100 % of rated force at 10 bar air pressure)</small>	power stroke length in mm	3							
		6	434	470	589	708	827	946	
		8							
		10							
		12	470	506	625	744	863	982	

8-bar-version <small>(100 % of rated force at 8 bar air pressure)</small>	power stroke length in mm	3						
		6						
		8						
		10						
		12						

6-bar-version <small>(100 % of rated force at 6 bar air pressure)</small>	power stroke length in mm	3						
		6						
		8						
		10						
		12						

Other stroke lengths on request.