

# SITE-LOG iLOG

# Most Reliable Data Loggers

www.microedgeinstruments.com

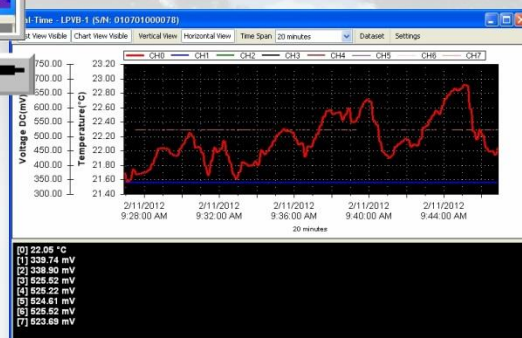
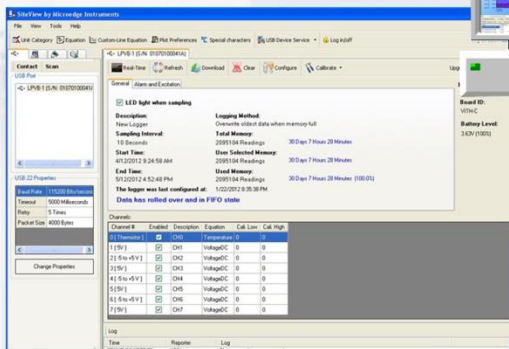


## Features

- High Accuracy
- 4MB Memory
- 10-Year Battery
- Eight Channels
- Alarm Outputs
- Aluminum Case
- USB & Serial Port

## Measurements

- Voltage
- Current
- Thermistor
- Thermocouple
- Relative Humidity



## Applications

Storage/Warehouse · Pharmacy Plant · Environment Control

**Microedge Instruments Inc.**

407 - 15216 North Bluff Road  
White Rock, BC Canada V4B 0A7

Toll Free: 1.877.352.9158

Fax: 1.877.453.0658

www.microedgeinstruments.com

info@microedgeinstruments.com

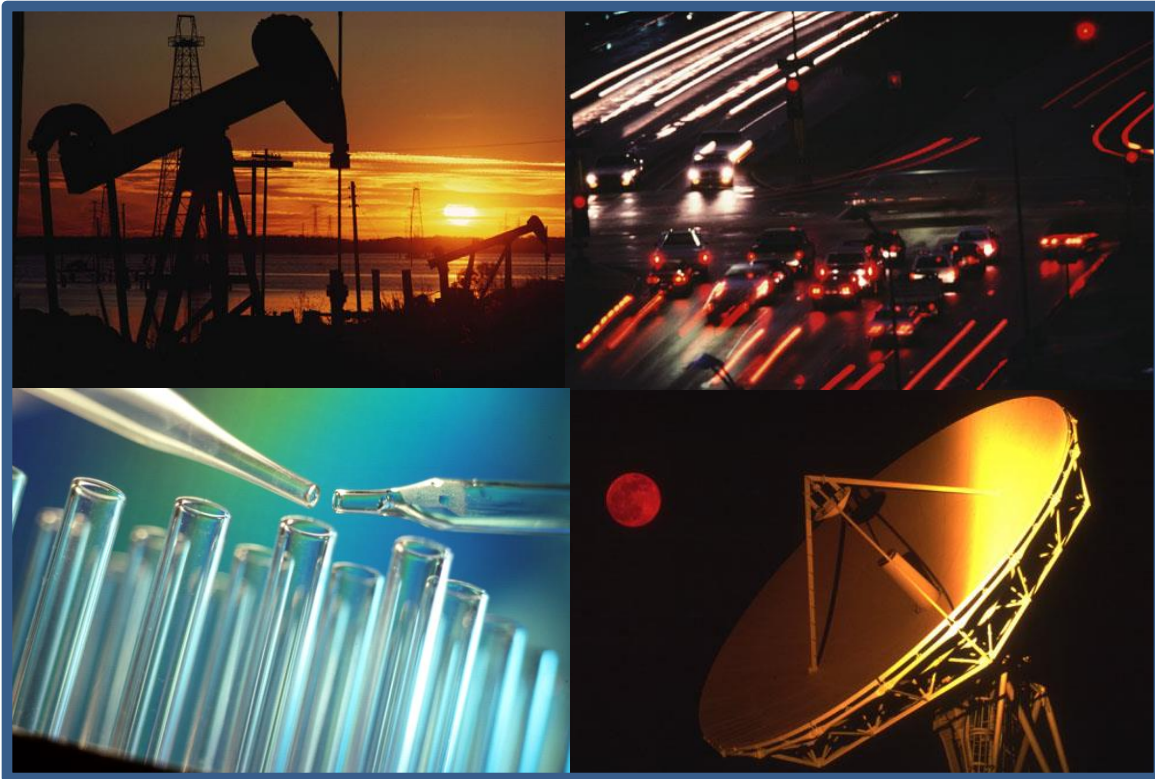
## **Microedge Instruments Inc. – The Company**

Microedge Instruments is a leading worldwide supplier of information data loggers used in many industries such as manufacturing, industrial process, test & measurement, aerospace, laboratory & education, agriculture, pharmaceutical, environmental...

With design and manufacturing facilities located in beautiful British Columbia of Canada, Microedge Instruments is always focused on innovative and state-of-the-art technologies and the products are widely used in the most demanding and mission-critical applications requiring performance, reliability and accuracy.

We provide data loggers for environment monitoring of: ambient or remote temperature, relative humidity, processing voltage, current, pulse, state change and event.

These portable instruments when combined with our powerful data processing software allow our clients to easily configure and manage the data logger, analyze and interpret recorded data with tabular and graphic views.



## **SITE-LOG** SERIES DATA LOGGERS

The SITE-LOG is a multi-channel, battery powered, stand-alone data logger. The logger records up to 4 mega-byte of data and stores them in non-volatile flash memory for later retrieval.

The SITE-LOG data loggers measure and record inputs of voltage, current, thermocouple (all types), thermistor etc. The measurements can be from sensors, transducers, transmitters or other sources.

Featuring an aluminum enclosure and conformal coating PCB, the SITE-LOG data logger has excellent performance in the harshest industrial environment.

Powered by a 16-bit ADC and programmable input range, the SITE-LOG data loggers are well suited for science and laboratory applications where precise and accurate measurements are critical.



### **SITE-LOG DATA LOGGER FEATURES**

- ❖ Multiple channels
- ❖ High precision & high accuracy (16-bit ADC)
- ❖ Large memory size (4MB)
- ❖ Plug & Play USB port + Serial Port with fast speed (115 kbps)
- ❖ Over 10 years of battery life
- ❖ Alarm & Excitation control outputs
- ❖ Wide sampling interval selections (20 ms – 12 hours)
- ❖ Rugged aluminum enclosure
- ❖ Conformal coated PCB treatment
- ❖ Compact & portable size
- ❖ Powerful software for download, graphing, analysis & alarm monitoring

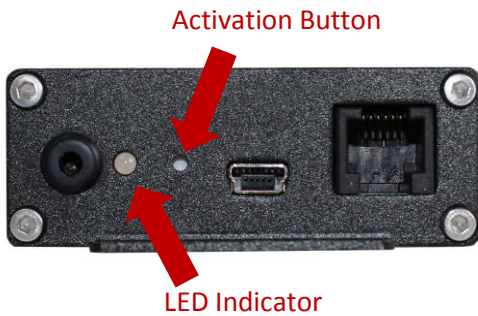
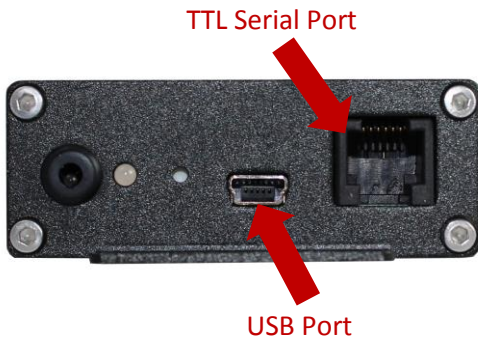
Product Website: <http://www.microedgeinstruments.com/loggers.php>

Microedge Instruments Inc.  
407 – 15216 North Bluff Road  
White Rock, BC, Canada, V4B 0A7

Toll Free: 1.877.352.9158  
info@microedgeinstruments.com  
www.microedgeinstruments.com

**SITE-LOG VOLTAGE DATA LOGGERS**

A SITE-LOG voltage data logger has one on-board thermistor to record the ambient temperature and seven external channels to record voltage inputs up to 20 VDC.



**LPVB-1 (7-Channel Voltage)**

- ❖ One ambient temperature channel
- Seven external voltage channels
- ❖ Ext-channel input range settings: 20, 10, 5, 2 VDC
- ❖ High accuracy: +/- 0.05% FSR @ 25C

**LPV-1 (7-Channel Voltage)**

- ❖ One ambient temperature channel
- Seven external voltage channels
- ❖ Channel input range settings: 20, 10, 5, 2 VDC
- ❖ Accuracy: +/- 0.15% FSR @ 25C

**LFVB-1,2,3,4,5 (7-Channel Voltage)**

- ❖ One ambient temperature channel
- Seven external voltage channels:  
LFVB-1: 20 VDC, LFVB-2: 10 VDC  
LFVB-3: 5 VDC, LFVB-4: 2 VDC  
LFVB-5:  
CH1:20,CH2:10,CH3-5:5,CH6:-7:2 VDC
- ❖ Accuracy: +/- 0.05% FSR @ 25C

**LFV-1,2,3,4,5 (7-Channel Voltage)**

- ❖ One ambient temperature channel
- Seven external voltages channels:  
LFV-1: 20 VDC, LFV-2: 10 VDC  
LFV-3: 5 VDC, LFV-4: 2 VDC  
LFVB-5:  
CH1:20,CH2:10,CH3-5:5,CH6:-7:2 VDC
- ❖ Accuracy: +/- 0.15% FSR @ 25C

Product Website: <http://www.microedgeinstruments.com/loggers.php>

## SITE-LOG CURRENT DATA LOGGERS

### LPCB-1 (7-Channel Current)

- ❖ One ambient temperature channel  
Seven external current channels
- ❖ Ext-channel input range settings:  
50 mA, 4-20 mA
- ❖ High accuracy: +/- 0.1% FSR @ 25C

### LPC-1 (7-Channel Current)

- ❖ One ambient temperature channel  
Seven external current channels
- ❖ Channel input range settings:  
50 mA, 4-20 mA
- ❖ Accuracy: +/- 0.15% FSR @ 25C

### LFCB-1,2,3 (7-Channel Current)

- ❖ One ambient temperature channel  
Seven external current channels:  
LFCB-1: 4-20 mA  
LFCB-2: 50 mA  
LFCB-3: CH1-3: 50 mA, CH4-7: 4-20 mA
- ❖ Accuracy: +/- 0.1% FSR @ 25C

### LFC-1,2,3 (7-Channel Current)

- ❖ One ambient temperature channel  
Seven external current channels:  
LFC-1: 4-20 mA  
LFC-2: 50 mA  
LFC-3: CH1-3: 50 mA, CH4-7: 4-20 mA
- ❖ Accuracy: +/- 0.15% FSR @ 25C

A SITE-LOG current data logger has one on-board thermistor to record the ambient temperature and seven external channels to record current inputs up to 50 mA.



Product Website: <http://www.microedgeinstruments.com/loggers.php>

**SITE-LOG TEMPERATURE DATALOGGERS**

A SITE-LOG temperature data logger has one on-board thermistor to record the ambient temperature and seven external channels to record thermocouple or thermistor sensors.

#	Channel Type/Input Range	Enabled
0	PT103J2 Thermistor	<input checked="" type="checkbox"/>
1	TC Range1(-8 to +73mV)	<input checked="" type="checkbox"/>
2	TC Range1(-8 to +73mV)	<input checked="" type="checkbox"/>
3	TC Range2(-4 to +36mV)	<input checked="" type="checkbox"/>
4	TC Range3(-2 to +18mV)	<input checked="" type="checkbox"/>
5	TC Range4(-8 to +8mV)	<input checked="" type="checkbox"/>
6	TC Range1(-8 to +73mV)	<input checked="" type="checkbox"/>
7	TC Range1(-8 to +73mV)	<input checked="" type="checkbox"/>

**LPTM-1 (7-Channel Thermocouple)**

- ❖ One ambient temperature channel for cold junction temperature compensation
- ❖ Seven external thermocouple channels
- ❖ Ext-channel input range settings: -8 to 73 mV, -2 to 18 mV
- ❖ Accuracy: +/- 0.15% @ 25C plus temperature compensation accuracy

**LPTH-1 (7-Channel Thermistor)**

- ❖ One ambient temperature channel
- ❖ Seven external thermistor channels
- ❖ Channel input range settings: > 8 KOhm, 8 KOhm, 2 KOhm
- ❖ Accuracy: +/- 0.2% FSR @ 25C

**SITE-LOG RELATIVE HUMIDITY DATA LOGGERS**

A SITE-LOG relative humidity data logger has one ambient temperature channel and one relative humidity channel. The RH reading is compensated by the ambient temperature.



**LRHT-1, 2 (2-Channel RH)**

- ❖ One ambient temperature channel
- ❖ one relative humidity channel:
  - LRHT-1: Internal sensors
  - LRHT-2: External sensors (3 FT long)
- ❖ Accuracy:
  - Temperature: +/- 0.4°C at 25°C
  - RH: +/-3% (20% - 80% RH)

Product Website: <http://www.microedgeinstruments.com/loggers.php>

## SITE-LOG PULSE/STATE/EVENT/ DATALOGGER

A SITE-LOG pulse/state/event data logger has seven channels that detect electronic or mechanical pulse counts, state changes or events. The data is saved in 4MB non-volatile flash memory for later retrieval.

### LPSE-1 (7-Channels)

- ❖ Seven external channels
- ❖ Ext-channel input types:  
Each channel can be configured as:  
Pulse count,  
State change,  
Event

## iLOG SERIES DATA LOGGERS

The iLOG series of data loggers are one or two channels, stand-alone data loggers record various parameters such as voltage, current, temperature, strain gauge/wheatstone bridge etc.

iLOG promises to utilize state-of-the-art technologies yet affordable and cost-effective solutions to deliver the most accurate measurement and reliable long term performance.

Its 4MB memory size, 16-bit ADC, 12-year battery life, rugged aluminum housing and many other unique features make it second to none with the best price/performance ratio.

All of MEI data loggers are designed and manufactured in Canada to ensure the highest quality standard.

### iLOG DATA LOGGER FEATURES

- ❖ High precision & high accuracy (16-bit ADC)
- ❖ Large memory size (4MB)
- ❖ Plug & Play USB port + Serial Port with fast speed (115 kbps)
- ❖ Over 12 years of battery life
- ❖ Alarm & Excitation control outputs
- ❖ Wide sampling interval selections (20 ms – 12 hours)
- ❖ Rugged aluminum enclosure
- ❖ Compact & portable size
- ❖ Powerful software for download, graphing, analysis & alarm monitoring



## **iLOG SERIES DATA LOGGERS**

### **iVDC-10 (iLOG Voltage)**

- ❖ One ambient temperature channel  
One external voltage channel
- ❖ Ext-channel input range: 0 – 10VDC
- ❖ High accuracy: +/- 0.05% FSR @ 25C

### **iCDC-25 (iLOG Current)**

- ❖ One ambient temperature channel  
One external current channel
- ❖ Ext-channel input range: 0-25 mA
- ❖ Accuracy: +/- 0.1% FSR @ 25C

### **iTC-80 (iLOG Thermocouple)**

- ❖ One ambient temperature channel  
One external thermocouple channel:
- ❖ Ext-channel input range:  
-8 to 73 mV (All types)
- ❖ Accuracy: +/- 0.15% FSR @ 25C

### **iTH-10 (iLOG Thermistor)**

- ❖ One ambient temperature channel  
One external thermistor channel for 10K thermistor.
- ❖ Accuracy: +/- 0.15% FSR @ 25C

### **iBG-X (iLOG Strain Gauge)**

- ❖ One excitation sense voltage channel,  
One bridge input channel
- ❖ Bridge channel input range:

Model	Range
iBG-8	+/-8mVDC
iBG-16	+/-16mVDC
iBG-32	+/-32mVDC
iBG-65	+/-65mVDC
iBG-130	+/-130mVDC
iBG-260	+/-260mVDC
iBG-520	+/-520mVDC
- ❖ Accuracy: +/-0.2% FSR @ 25C

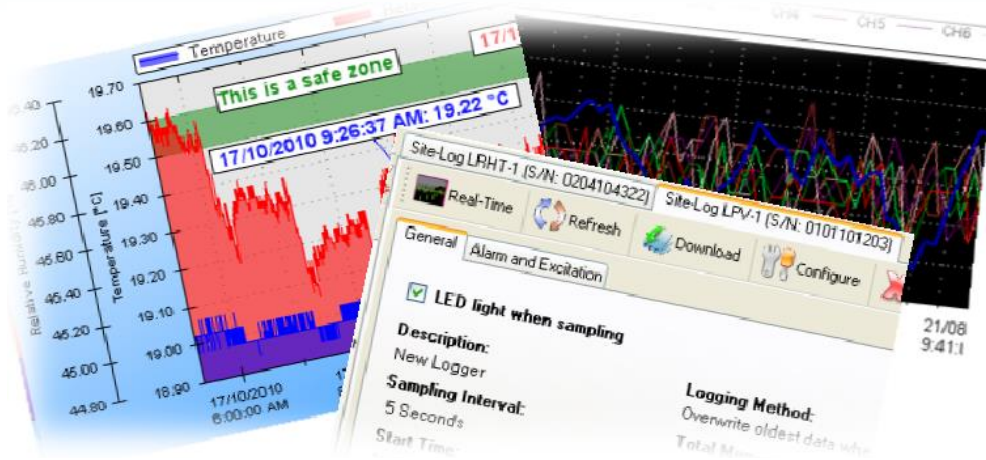
Product Website: <http://www.microedgeinstruments.com/ilog.php>



## SiteView WINDOWS SOFTWARE

SiteView is a PC based application works with data loggers for downloading, configuration and data analyzing and plotting.

Its user-friendly graphic interface plus powerful functionalities fit both novice and advanced users.



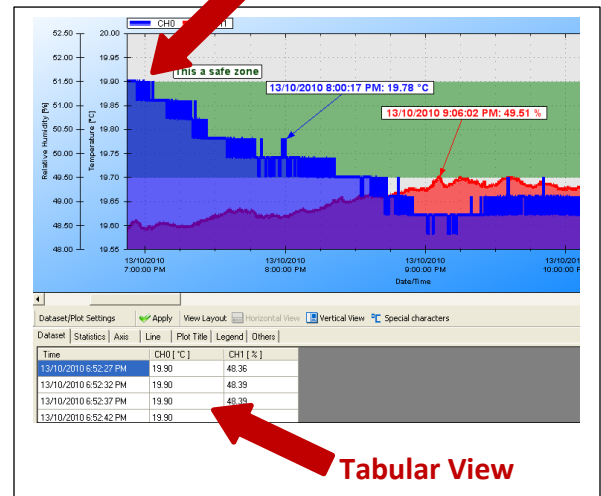
### SiteView Features

- ❖ Support USB, serial Port and Ethernet communications for easy local and remote access of data loggers
- ❖ Real-time view and chart recording replaces chart recording device
- ❖ Device Service function allows multiple SiteViews remote access each other
- ❖ Password protection prevents logger data from deleting
- ❖ Zoom in/zoom out, annotation/label of graph functions provide detailed view of data
- ❖ Multiple file loading allows easy data comparison.
- ❖ Dynamic statistics provides detailed information of current zoomed view
- ❖ On-line free upgrade of both SiteView and data logger firmware ensures products up to date
- ❖ The versatility of custom equation and custom-line equation handle complicated measurement requirements.

USB, Serial, Ethernet Interfaces



Plot View



Tabular View

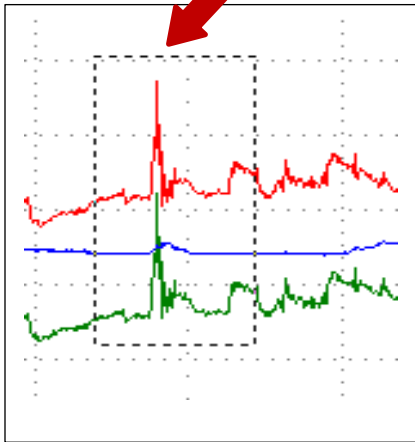
Product Website: <http://www.microedgeinstruments.com/siteview.php>

## SiteView WINDOWS SOFTWARE

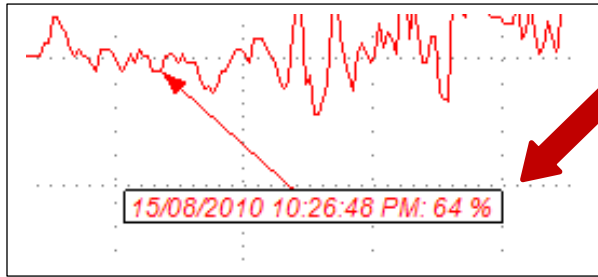
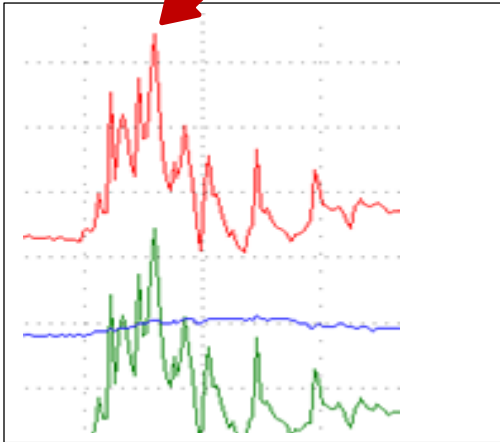
```
//A custom equation. Do not change equation name. Equation must return a value.  
public double CO_200PPM(double Input)  
{  
    //add your code here  
    double output;  
    output = (200 - 0) * (Input - 0.004) / (0.02 - 0.004) + 0;  
    return output;  
}
```

**Custom Equation**

**Before Zooming**



**After Zooming**



**Annotation/Comments**

Product Website: <http://www.microedgeinstruments.com/siteview.php>

Microedge Instruments Inc.  
407 – 15216 North Bluff Road  
White Rock, BC, Canada, V4B 0A7

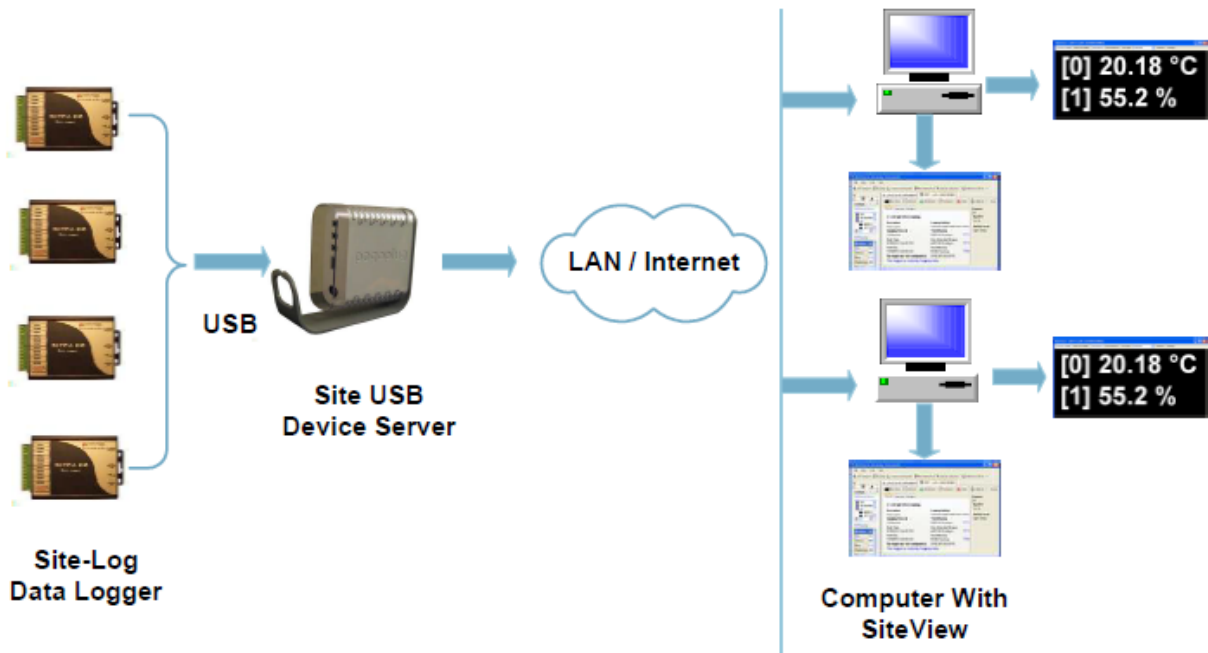
Toll Free: 1.877.352.9158  
info@microedgeinstruments.com  
www.microedgeinstruments.com

## Site USB Device Server

Site USB Device Server is an USB-over-Ethernet device server which enables work with the remote data loggers over a local network or Internet as if they were connected directly to the local PC.

### Features

- ❖ Access data logger from any place where Ethernet is available
- ❖ Up to 20 clients can access same data logger simultaneously
- ❖ Up to 25 data loggers can be connected to one Site USB Device Server
- ❖ Password Protection for Security
- ❖ Dynamic IP Addressing
- ❖ Provide power supply to data logger



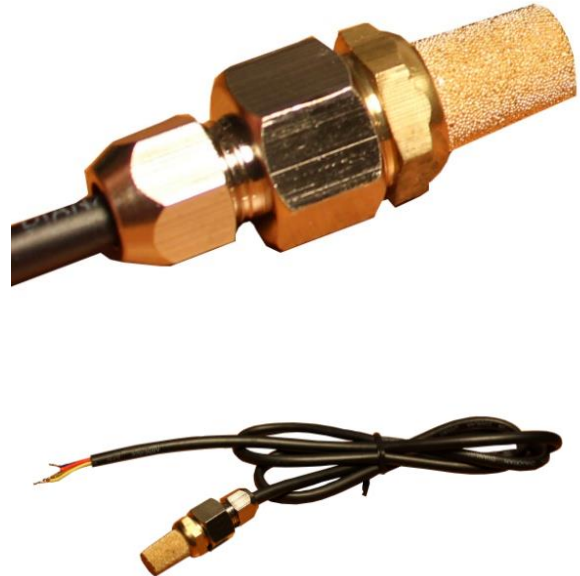
Product Website: <http://www.microedgeinstruments.com/usbserver.php>

## SHT11 RH & TEMPERATURE PROBE

SHT11 RH & Temperature Sensor Probe consists of a SHT11 digital RH & Temperature sensor from Sensirion and a sintered copper protection housing. It is used to measure ambient relative humidity and temperature, the data can be transferred to host device via I2C communications. It works with any device supporting I2C comm. interface.

### Features

- ❖ One relative humidity channel
- One temperature channel
- ❖ Four open wires for I2C interface
- ❖ 3-foot long with sintered copper housing
- ❖ Accuracy:  
RH: +/-3% (20% - 80% RH)  
Temperature: +/- 0.4°C at 25°C



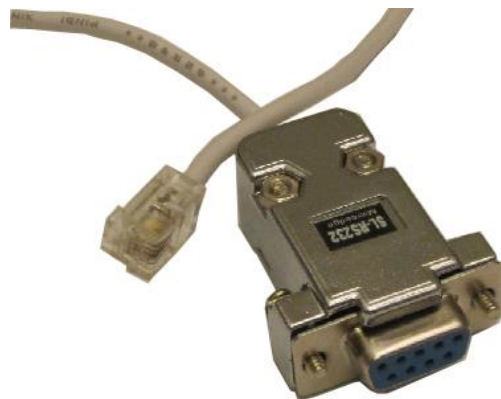
Product Website: <http://www.microedgeinstruments.com/rhprobe.php>

## SL-RS232 Converter

SL-RS232 Converter is used to convert data logger's TTL level communication signal to RS232 standard.

### Feature & Application

- ❖ RJ11 & DB-9 male interface
- ❖ 3-foot long
- ❖ Computer only has COM port
- ❖ Host device is not computer



Product Website: <http://www.microedgeinstruments.com/sl-rs232.php>

The logo for Microedge Instruments Inc. is centered in a white oval with a blue border. It features a stylized red 'M' followed by the word 'icroedge' in a black sans-serif font. Below this, the words 'Instruments Inc.' are written in a smaller, bold, black sans-serif font.

***M*icroedge**  
**Instruments Inc.**

407 – 15216 North Bluff Road  
White Rock, BC, Canada, V4B 0A7  
Toll Free:1.877.352.9158  
info@microedgeinstruments.com  
www.microedgeinstruments.com