

SUNNEX ESD

Design

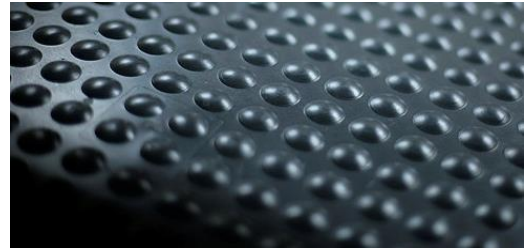
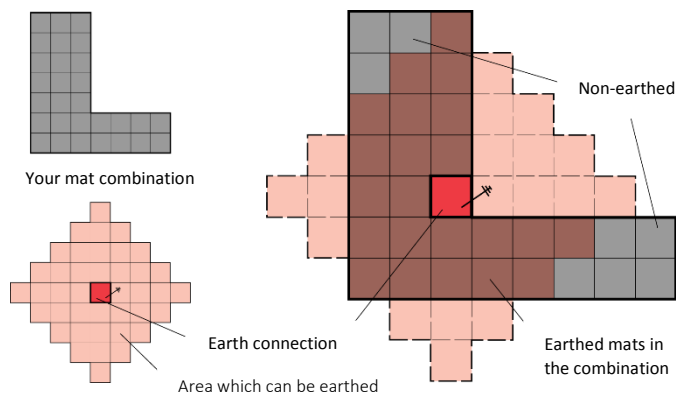
Sunnex ESD is an ergonomic workplace mat made of highly-resistant nitrile rubber which disperses static electricity. The mat has been designed to reduce stress on back, hips, knees and feet. It is the elasticity of the nitrile rubber in combination with the air-cushion principle and bumps in the upper part of the mat which provides comfortable and ergonomic pressure relief.

Properties

Sunnex ESD is earthed with either a plug or eyelet cable connector on every fifth section. Resistance is about 1 MΩ per section. Sunnex ESD is intended for use in environments where it is important to disperse static electricity, for example in the electronics, textile and chemical industries as well as where explosives are produced. The high friction which nitrile rubber has against other materials helps the mat to lie still on most floors and the sloping outer edge provides a smooth transition between floor and mat.

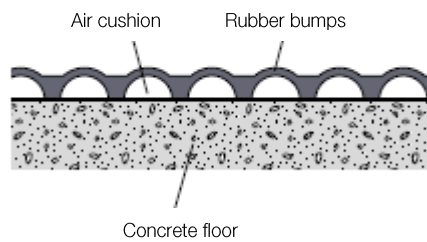
Flexibility

The flexible construction system means that Sunnex ESD can be assembled to your desired layout. No tools are needed and each section is fastened together using the profile of the mat and the click system. Sunnex ESD comes in black and can easily be cut using a sharp pair of scissors to fit, for example, around a table leg.



Product specification

Cross-section profile of Sunnex ESD



Mat sections	Dimension, ca mmTD>	Weight, ca kg	Part No
A+B+A Basic kit + connector	750 x 1500	10,0	120120
A+B+A Basic kit+ ring terminal	750 x 1500	10,0	120120-1
A End section	750 x 375	2,4	120121
B Middle section	750 x 750	5,2	120122
C Edge section	750 x 750	5,2	120123
D Corner section	750 x 750	5,2	120124
E Central section	750 x 750	5,2	120125
F Combination section 1	750 x 375	2,4	120126
G Combination section 2	750 x 175	1,3	120127
H Connector ESD	-	0,07	100140
I Ring terminal ESD	-	0,02	100141

