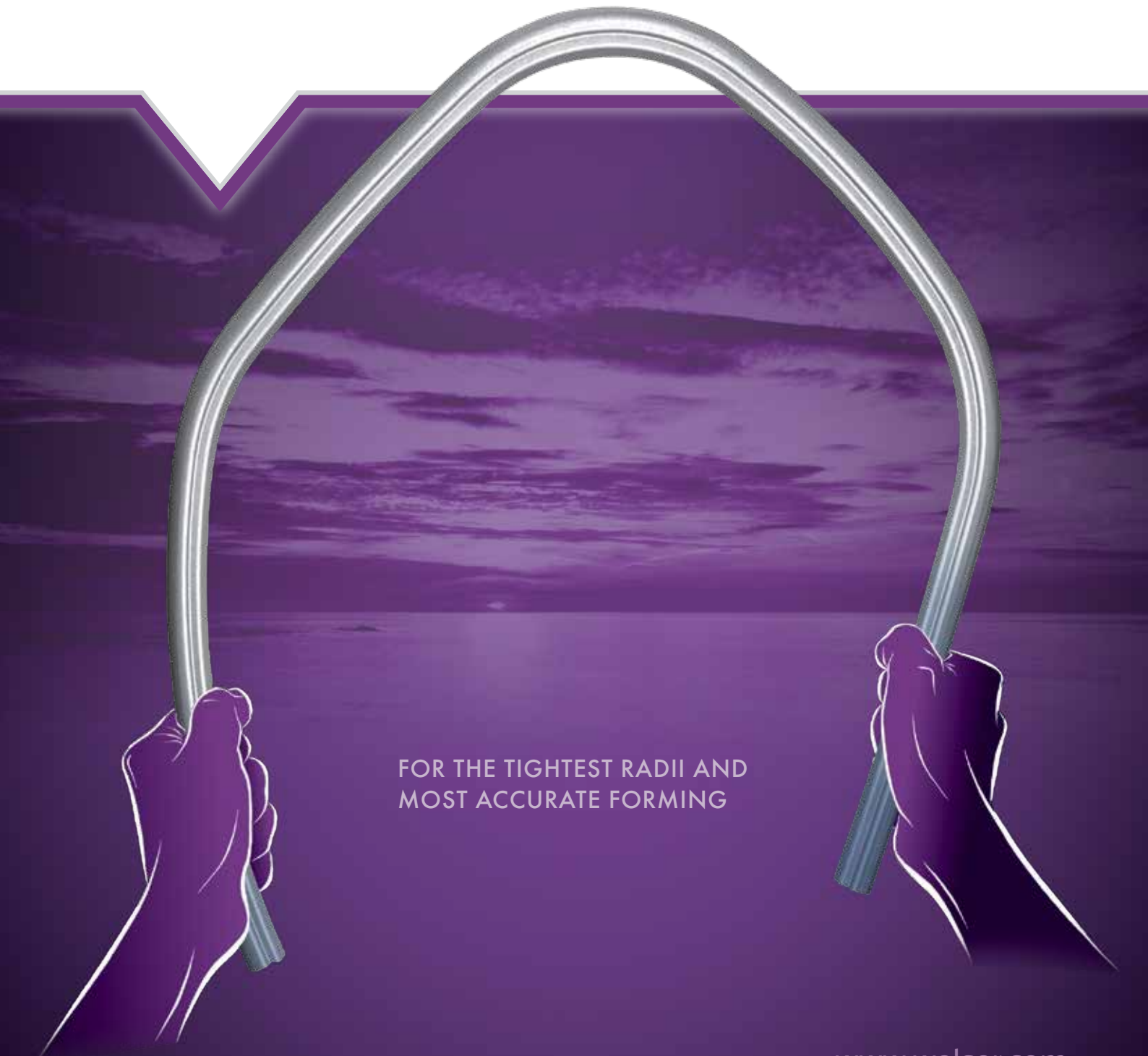


# Metal Section Bending

Quality, true to form.



FOR THE TIGHTEST RADII AND  
MOST ACCURATE FORMING

# Sophisticated

Bending Solutions for  
Demanding Applications



SIDE IMPACT  
PROTECTION

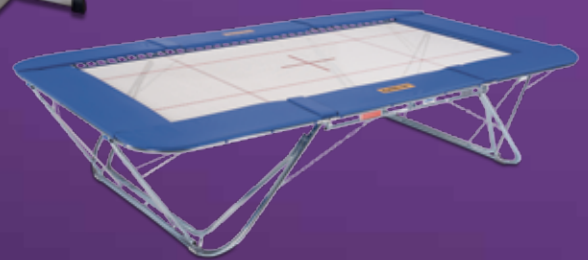
B POST  
REINFORCEMENT

**SECURE**  
CAB FRAMES

STRUCTURAL PARTS

**LIGHT**  
ROBUST

FRAMEWORK  
FOR SPORTS EQUIPMENT



**WELSER PROFILE'S CURVED METAL  
SECTIONS ARE ALSO USED IN:**

- SAFETY STRUCTURES
- BODY IN WHITE COMPONENTS
- RAIL CARRIAGES

When it comes to extremely precise bending, where cross section and surface finish effects must be kept to an absolute minimum, our partners rely on Welser Profile's bespoke metal section bending capabilities.



SAFE



SIDE WALLS  
DOOR FRAMES



FACADE  
SECTIONS ELEGANT



WINDOW  
PROFILES

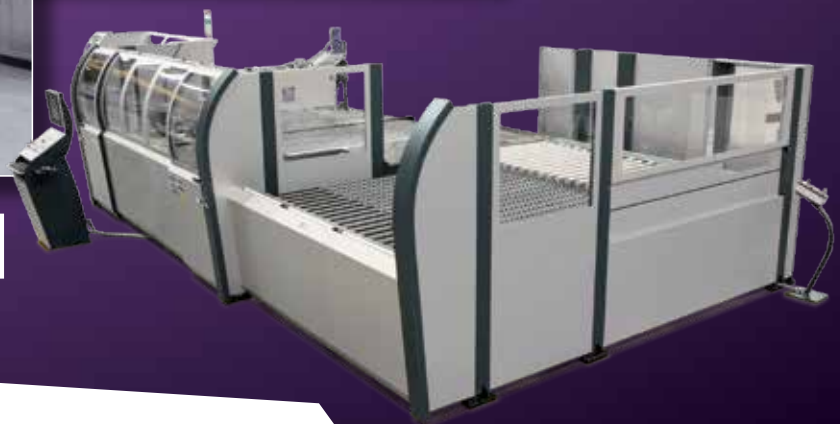


TRACKS AND  
GUIDE RAILS



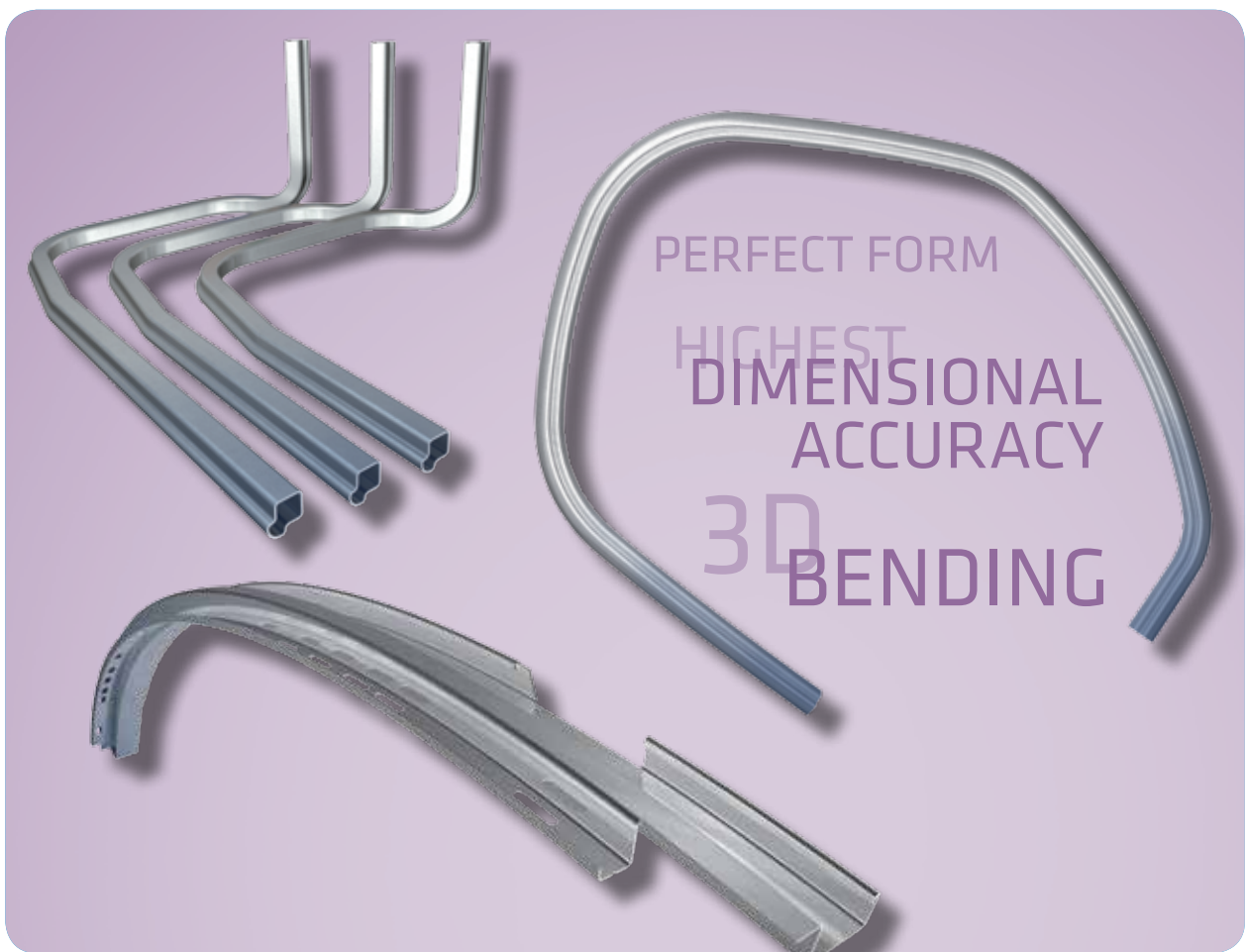
ROBUST

HIGH STRENGTH  
LOAD BEARING



FRAMEWORK  
FOR MACHINES

# Quality True to Form



#### CONSUMMATE CONTROL

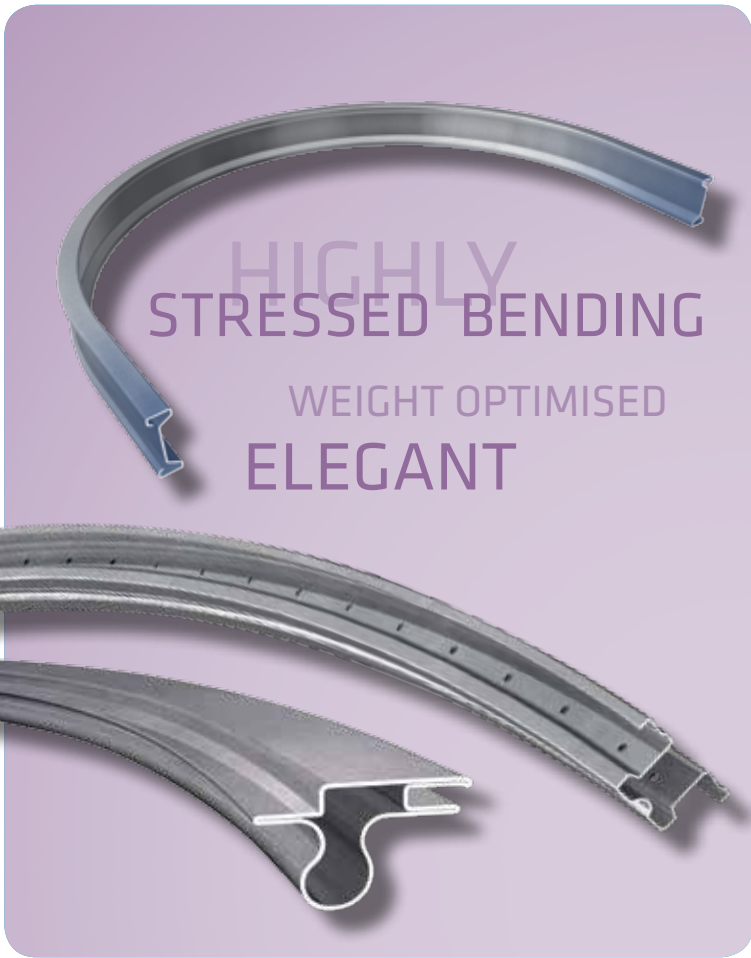
- Tightly toleranced, very exact shapes to facilitate integration into final product
- Extremely tight bend radii possible
- Complex 3D Bending capabilities

#### Only the Highest Quality from Welser Profile

Extensive quality procedures ensure that all Welser metal sections meet the most stringent quality criteria. In addition to preventative planning measures, continual production controls ensure adherence to the highest quality standards, from the feedstock material through to the finished Welser product.

- ISO 9001 Certified
- ISO 14001 & O-SAS 18001 Certified
- Feedstock Material Controls, including on site tensile testing
- First Sample Customer Certified Production

Welser Profile's section bending solutions convincingly manage the challenging demands of bending complex metal cross sections whilst maintaining the required material properties and tolerances. Many years of experience, our in-house tooling design, development & construction capabilities, and our extensive expertise are combined to ensure your project's success.



#### EXEMPLARY CONDUCT

- Minimal cross section deformation even at high curvatures
- Bending capabilities across a range of cross section types:
  - Open / Welded
  - Symmetric / Asymmetric
  - Very thin / Very thick walled profiles



#### PERFECT SERVICE

- 100% Part testing if required
- Several bending directions seamlessly combined within one part
- High strength steel & stainless steel section bending capabilities
- Perfect surface finish even at high curvatures

# Success

has many components ...

## PRODUCT DEVELOPMENT

- Many years experience of metal section bending
- Support & expertise offered even at your design phase
- FEA Simulation

## LOGISTICS

- Dedicated contacts for customer support
- Bespoke packaging
- Flexible transport solutions
- Security of Supply through production sites in Austria & Germany



... but only one name: Welser Profile.

The Welser Profile name is recognised throughout the world as *the* specialist when it comes to successfully converting your bespoke, complex metal section requirements. To date, more than 20,000 individual metal cross sections have been developed, and every day up to 5 more are created.



#### **DOWNSTREAM PROCESSING**

- Customer defined processing level
- Fully finished products ready for installation
- Production of multiple metal section modules

#### **RAW MATERIAL FEEDSTOCK**

- Customer defined material specifications
- High strength steels & stainless steels
- Customer defined surface properties

#### **ROLL FORMING**

- In-house metal section production
- Optimised roll forming
- Economic production through process integrated bending

#### **Our Innovations give Life its Profile**

As specialists in roll forming and finishing of metal sections, we work in close collaboration with our customers to produce individual solutions in steel, stainless steel and non-ferrous metals.

- Open bespoke metal sections
- Welded metal section tubes
- Complete multi-section modules

More than 1800 employees across the sales offices and the 3 production plants in Ybbsitz, Gresten (in Austria) and Bönen (in Germany) are working daily to successfully bring the requirements of our international customers to fruition.

**Welsler Profile GmbH**

Prochenberg 24  
A-3341 Ybbsitz / Österreich  
Tel (+43 7443) 800-0  
Fax (+43 7443) 800-4111  
at@welsler.com

**Welsler Profile Austria GmbH**

Prochenberg 24  
A-3341 Ybbsitz / Österreich  
Tel (+43 7443) 800-0  
Fax (+43 7443) 800-4111  
at@welsler.com

**A-3264 Gresten / Österreich**

Tel (+43 7487) 410-0  
Fax (+43 7487) 410-4111

**Welsler Profile Deutschland GmbH**

Edisonstraße 23  
D-59199 Bönen / Deutschland  
Tel (+49 2383) 914-0  
Fax (+49 2383) 914-5555  
de@welsler.com

**RP Technik GmbH Profilsysteme**

Edisonstraße 4  
D-59199 Bönen / Deutschland  
Tel (+49 2383) 91 49-0  
Fax (+49 2383) 91 49-222  
info@rp-technik.com

**Welsler AG**

Seestrasse 96  
CH-9326 Horn / Schweiz  
Tel (+41) 71 844 80 80  
Fax (+41) 71 844 80 89  
ch@welsler.com

**AB Welsler Profiler**

Filmgatan 2  
S-169 33 Solna / Sverige  
Tel (+46 8) 730 24 00  
Fax (+46 8) 730 24 24  
se@welsler.com

**Welsler Profieltechnik (Benelux) B.V.**

Maleneind 2  
NL-4751 GP Oud Gastel / Nederland  
Tel (+31 165) 51 10 00  
Fax (+31 165) 51 36 55  
nl@welsler.com

**Welsler Profilés sarl**

Les Propylées 1 • 2 allée des Atlantes  
F-28000 Chartres / France  
Tel (+33 237) 33 67 67  
Fax (+33 237) 33 67 60  
fr@welsler.com

**Welsler Profilati S.r.l. Unipersonale**

Piazzetta Scalgiera 6  
I-37019 Peschiera del Garda / Italia  
Tel (+39) 045 640 17 95  
Fax (+39) 045 640 92 73  
it@welsler.com

**Perfiles Welsler S.L.**

Via Augusta 298-1.1.  
E-08017 Barcelona / España  
Tel (+34 93) 252 30 30  
Fax (+34 93) 280 66 00  
es@welsler.com

**Welsler Sections (UK) Ltd.**

Sovereign House, Stockport Road  
Cheadle, Cheshire • SK8 2EA /  
Great Britain  
Tel (+44 161) 491 52 10  
Fax (+44 161) 491 00 08  
uk@welsler.com

**Welsler Profile Sp. z o.o.**

ul. Św. Tomasza 34  
PL-31-027 Kraków / Polska  
Tel (+48 12) 426 77 70  
Fax (+48 12) 426 77 77  
pl@welsler.com

**Welsler Profile s.r.o.**

Na Pankráci 404/30A  
CZ-140 00 Praha 4 / Česká Republika  
Tel (+42 0) 244 468 803  
Fax (+42 0) 244 468 805  
cz@welsler.com

**Welsler Profil Sistemleri Tic. Ltd. Sti.**

Barbaros Mah. Sümbül Sok.  
Deluxia Palace, A-352 Atasehir  
TR-34746 Istanbul / Türkiye  
Tel (+90 216) 510 12 93  
Fax (+90 216) 510 12 94  
tr@welsler.com