



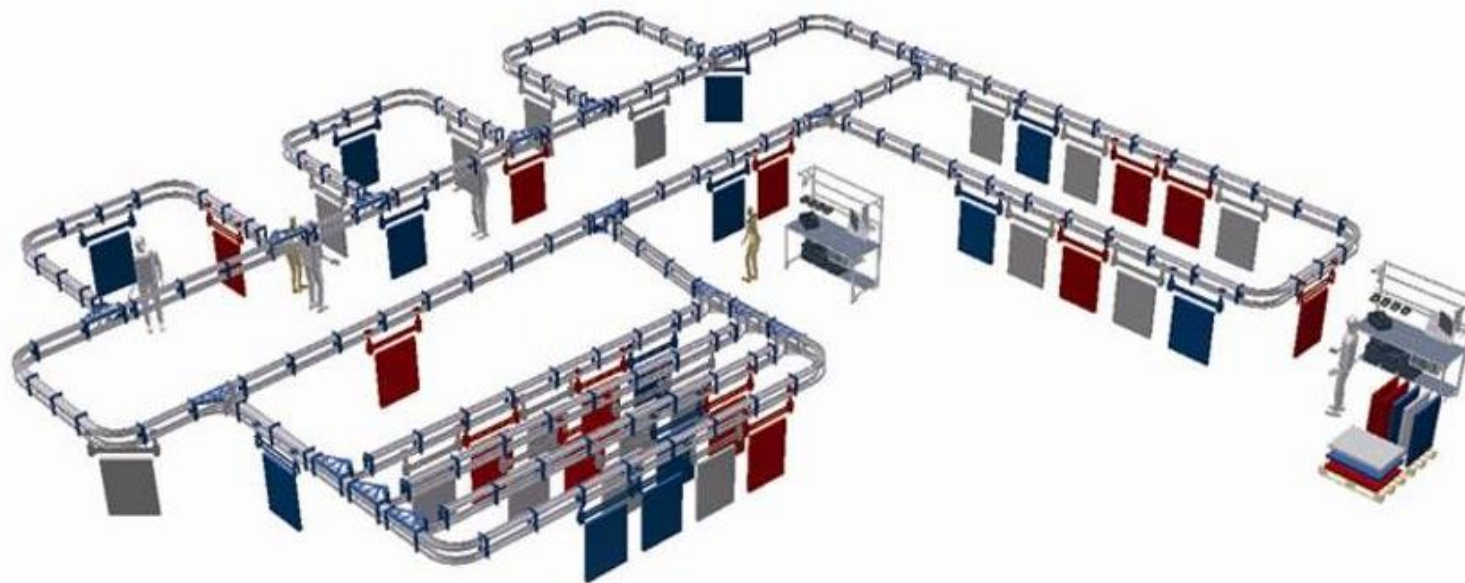
OCS 500 Overhead Conveyor

Part of
Axel Johnson
International

OCS 500 OVERHEAD CONVEYOR

Up to 500 kg/m

The OCS 500 overhead conveyor handles loads up to 500kg/m. The basis of the system is numerous driven and/or manual tracks. To these, switches, curves and buffer sections are connected for a maximum flow in production. The modular system is adapted to load weight and other parameters. The system enables quick and easy changes in further development of the production process.



Conveyor tracks

The conveyor tracks are simple, reliable and almost completely silent. The drive mechanism consists of a friction belt driven by a worm gearmotor.



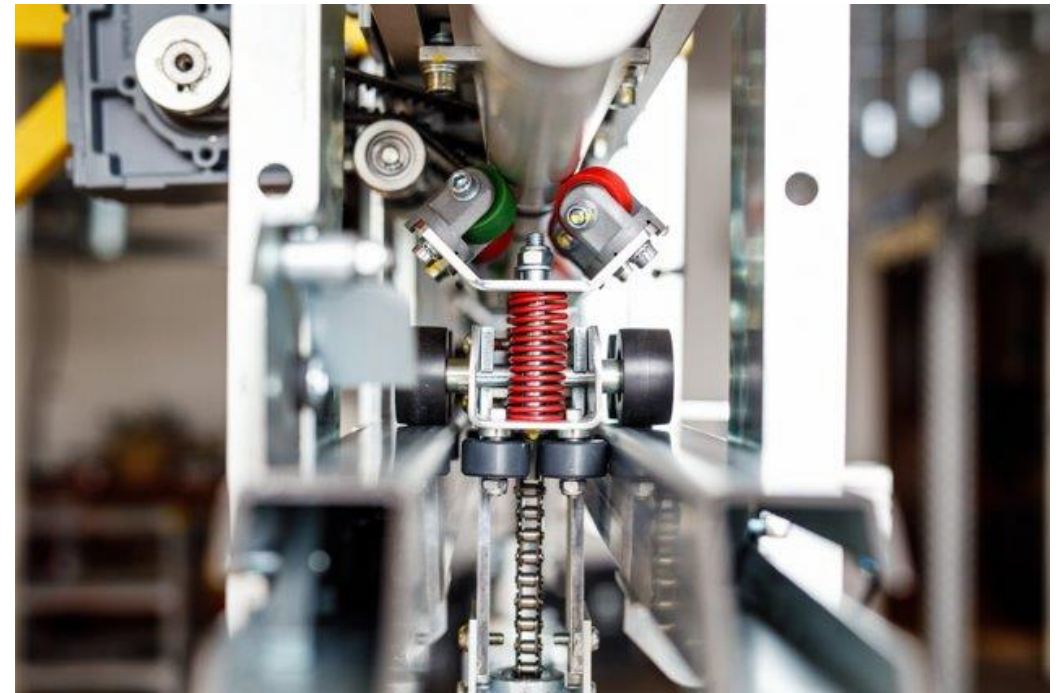
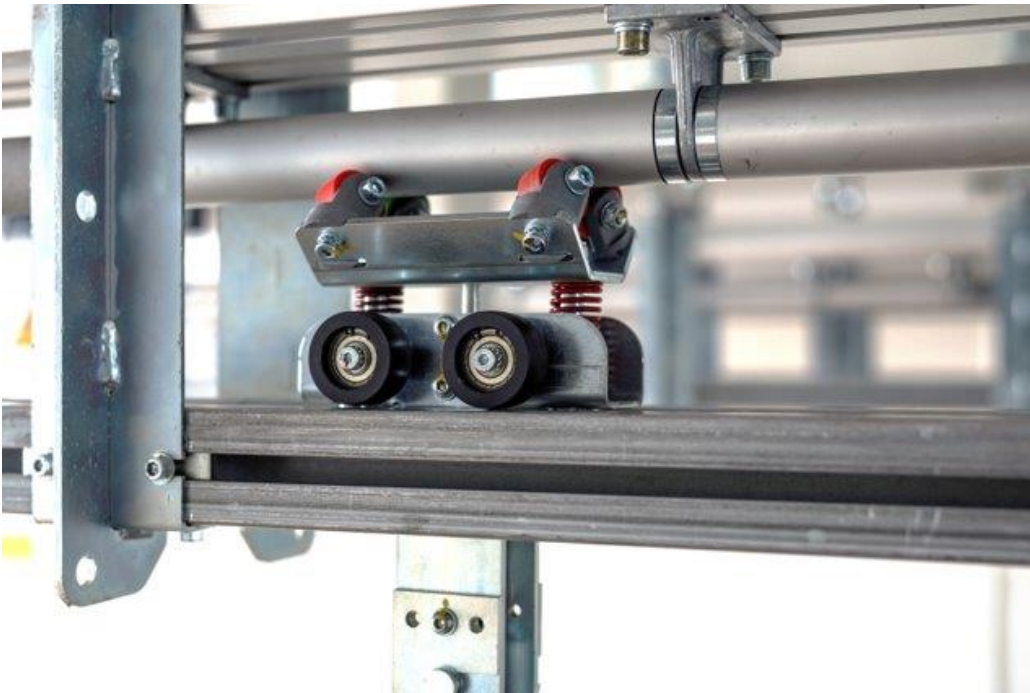
Drive units

The drive speed can be varied from 1 to 30 m/min. Different sections of the system can run at different speeds, as well as backwards and forwards. Drive units can be equipped with frequency converters which provide a very smooth start and stop motion in individual positions.



The Trolley

The trolley has four angled wheels that apply pressure on to a rotating aluminum tube. In this way, the rotational force is transferred through the angled wheels and the trolley is moved forward by friction. By using single, double or quattro trolleys means that different configurations allow different loads. The hanging powered transport wagons are controlled by a PLC or database system that can be linked to existing production systems.



OCS 500 OVERHEAD CONVEYOR

Product carriers

The product carrier is developed and adapted based on needs, requirements and careful analysis. Designed to handle many different parts. Adjustable work height and rotation can be integrated as needed.



Part of
Axel Johnson
International

Workstations

Workstations are designed according to the operator's work and position. The carrier's location is individually adjusted for the best possible ergonomics and productivity.



Curves and switches

Driven curves from 5° to 180°. A flexible tube drives the trolley through the whole curve section maintaining complete control, and smooth movement, over the trolley. In order to direct the trolleys around the system there are different types of switches, 45° and 90° in both directions – right and left.



Power & Free

Production systems need buffer zones for even balance. The OCS 500 overhead conveyor with Power & Free can buffer both on the driven track and at special buffer areas such as a robot station, loading and unloading.



OCS 500 OVERHEAD CONVEYOR

Vertical conveyors/elevations

Vertical conveyors / elevations are usually the best solution when the trolleys are to be transported vertically. The OCS compact vertical conveyor takes up minimal space and can load on several levels. The system can also transport through inclines/declines of up to 25° depending on load weight.



Part of
Axel Johnson
International

Horizontal Transfers

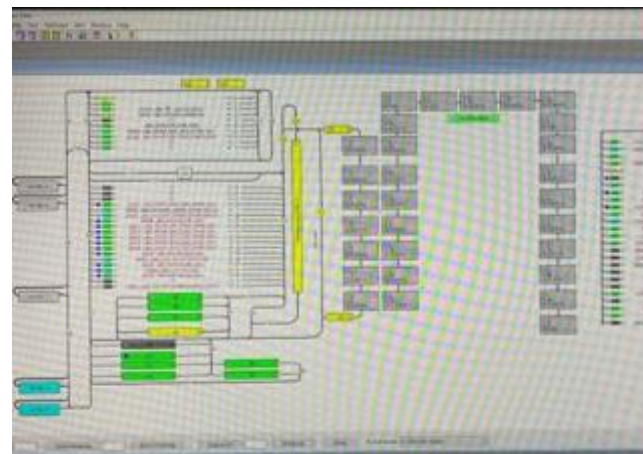
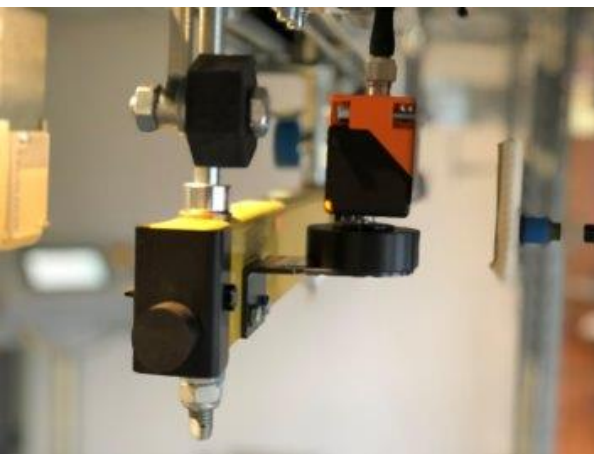
Transfers are used in compact buffers and flexible utilization in bidirectional tracks.



OCS 500 OVERHEAD CONVEYOR

Control system

Material handling systems require a complete and advanced control system that controls flow and buffer amounts in production. The trolleys are equipped with RFID for identification and traceability via a Siemens PLC and/or a Scada control system.



O C S 5 0 0 O V E R H E A D C O N V E Y O R

Costs and features

OCS transport solutions offer more features than traditional Power & Free systems and similar features as in EMS Electric Monorail systems, but at a lower cost. The technology is efficient and simple, because the system is very reliable and maintenance costs are low.

O C S 5 0 0 O V E R H E A D C O N V E Y O R

OCS 500

Clean, quiet and oil-free

Efficient installation

Flexible and modular



Contact

OCS Overhead Conveyor System AB

Stormgatan 9
504 64 Borås, Sweden

Phone: + 46 33 23 34 40

Email: info@ocs.se

Web: www.ocs.se

Part of
Axel Johnson
International