

A large commercial jet engine is the central focus, shown from a low angle looking up. The engine's fan blades are visible, and the surrounding aircraft structure is partially seen. In the background, a hangar and airport lights are visible under a clear sky. The image is overlaid with a dark blue geometric shape on the left and bottom right.

CORPORATE  
HANGAR

WE MAKE  
INNOVATION  
HAPPEN

**Prysmian**  
Group

# Pry-ID

## The cable fingerprint



Pry-ID is the fingerprint for your cable. It does not need a power supply and it lasts for the whole lifetime of the cable, following it in even the harshest environments.

With the cable fingerprint that is stored in an RFID chip, Pry-ID gives access to a cloud-based software and a powerful set of features that bring the cable information to all stakeholders in an instant.

# Pry-ID

Why a fingerprint for cables?



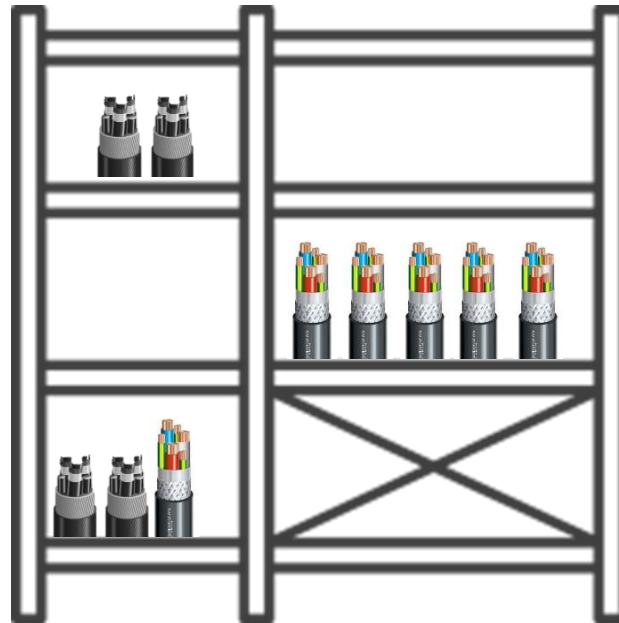


# Pry-ID

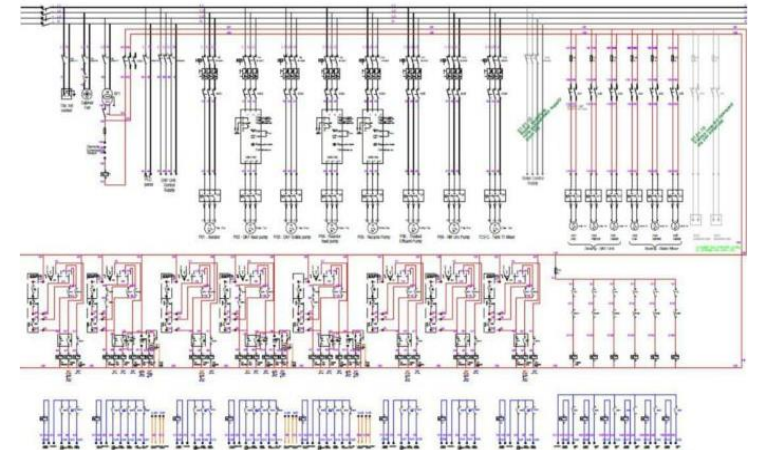
This is where Pry-ID works



CABLE IDENTIFICATION



INVENTORY AND  
MATERIALS

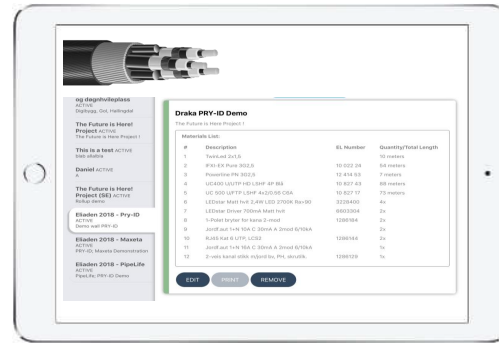


DOCUMENTATION AND  
SCHEMATICS



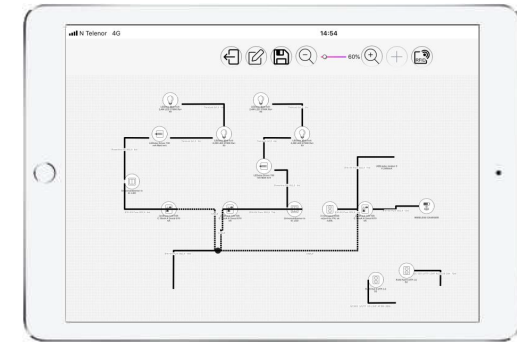
## SMART MARKING

Have cable marking that doesn't fade, ensuring quick and certain cable identification for safe working



## DOCUMENTATION

Keep track of all the materials that were actually used and access project information through an intuitive platform



# BLUEPRINTING

Get a schematic of all your installed cables and electrical components and keep it up to date as the installation evolves through repairs and upgrades

# Pry-ID

## The smart cable

### SMART MARKING



### SAFE AND QUICK APPROACH

Find and identify the faulty cable quickly without having to worry about cutting the wrong cable.



### COMPONENT INFORMATION

Get all the relevant data about the component at a glance.



### INVENTORY MANAGEMENT

Use the RFID tags to automate your inventory processes and save time.

# Pry-ID

## The smart cable

### DOCUMENTATION

og degnhvileplass  
ACTIVE  
Digtlbygg, Göl, Hallingdal

The Future is Here!  
Project ACTIVE  
The Future is Here Project 1

This is a test ACTIVE  
blab alfabla

Daniel ACTIVE  
A

The Future is Here!  
Project (SE) ACTIVE  
Rollup demo

Elladen 2018 - Pry-ID  
ACTIVE  
Demo wall PRY-ID

Elladen 2018 - Maxeta  
ACTIVE  
PRY-ID, Maxeta Demonstration

Elladen 2018 - PipeLife  
ACTIVE  
PipeLife, PRY-ID Demo

**Draka PRY-ID Demo**  
The Future is Here Project 1

Materials List:

#	Description	EL Number	Quantity/Total Length
1	TwinLed 2x1,5		10 meters
2	IFX1-EX Pure 3G2,5	10 022 24	54 meters
3	Powerline PM 3G2,5	12 414 53	7 meters
4	UC400 LUFTP HD LSHF 4P BIA	10 827 43	88 meters
5	UC 500 LUFTP LSHF 4x2/0,56 C6A	10 827 17	73 meters
6	LEDstar Matt hvit 2,4W LED 2700K Ra>90	3228400	4x
7	LEDstar Driver 700mA Matt hvit	6603304	2x
8	1-Polet bryter for kana 2-mod	1286184	2x
9	Jordf.aut 1+N 10A C 30mA A 2mod 6/10kA		2x
10	RJ45 Kat 6 UTP, LCS2	1286144	2x
11	Jordf.aut 1+N 16A C 30mA A 2mod 6/10kA		1x
12	2-veis kanal stikk mjord bov, PH, skrutilk.	1286129	1x

EDIT PRINT REMOVE

**Schneider**  
ASD07616.0127  
Acti 9 iDPN H Vigi -  
RCBO - 1P+N - 16A -  
B Curve - 10000A -  
30mA - type A

**Draka**  
IFX1-EX Pure 3G2,5 FRHF  
Elnr1000201  
32meter

**Schneider**  
WDE002018.234  
Exact Primo ko  
mplett bryter 6/1  
endevidend hurti  
gklemme hvit

**Draka**  
IFX1-EX Pure 3G2,5 FRHF  
Elnr1000201  
29meter

**GLAMOX**  
O10-S290.01  
Vandalisikket LED-ar  
matur for tak og veg  
g

**Draka**  
IFX1-EX Pure 3G2,5 FRHF  
Elnr1000201  
86meter

**GLAMOX**  
O10-S290.02  
Vandalisikket LED-ar  
matur for tak og veg  
g



### MATERIAL USAGE

Keep track of the current inventory and the actual usage of cables and components.



### VERIFICATION AND TRACKING

Automatically generate records for the of inspection and maintenance history for each component.



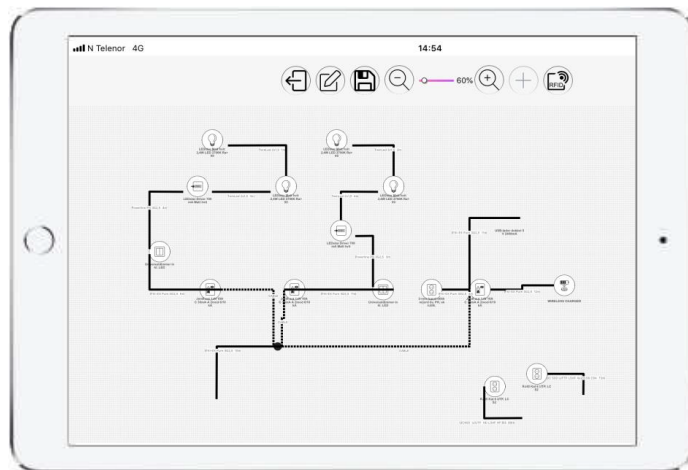
### CLOUD PORTAL ACCESS

Access all the information about your installations through the online portal.

# Pry-ID

## The smart cable

### BLUEPRINTING



### T&I CABLES BLUEPRINTS

Automatically record network topology and the exact position of the cables to generate blueprints.



### GEOGRAPHICAL MAPPING

Automatically generate geographic network maps by scanning the RFID tags on cables during installation.



### UPDATE ON THE GO

Make adjustments to the blueprint just as the changes are made in the field



# Pry-ID

## How does it work?

1



### CABLE WITH FINGERPRINTS

Get the PRY-ID version of the cable you need. This cable comes equipped with RFID “fingerprints” and the information about the cable is accessible through a web platform.

2



### CLOUD PLATFORM

Access the cable and project information on any device through the intuitive online platform. The basic mobile app is included with the subscription, enabling component identification and access to specifications.

3



### PREMIUM MOBILE APP

Install the cable using the mobile app and the bluetooth-compatible RFID scanner to immediately create blueprints and leave notes about the installation. Information about the cable can be accessed by scanning the cable fingerprints.

# Pry-ID Pricing

1



## CABLE WITH FINGERPRINTS

Additional fee on top of the regular price of the cable based on the purchased length (per meter)

2



## CLOUD PLATFORM

Monthly fee based on the amount of data stored on the platform (per RFID tag/line item)

3



## PREMIUM MOBILE APP

User-based fee for access to the premium app

# Pry-ID

How does it work?



## CABLE WITH FINGERPRINTS



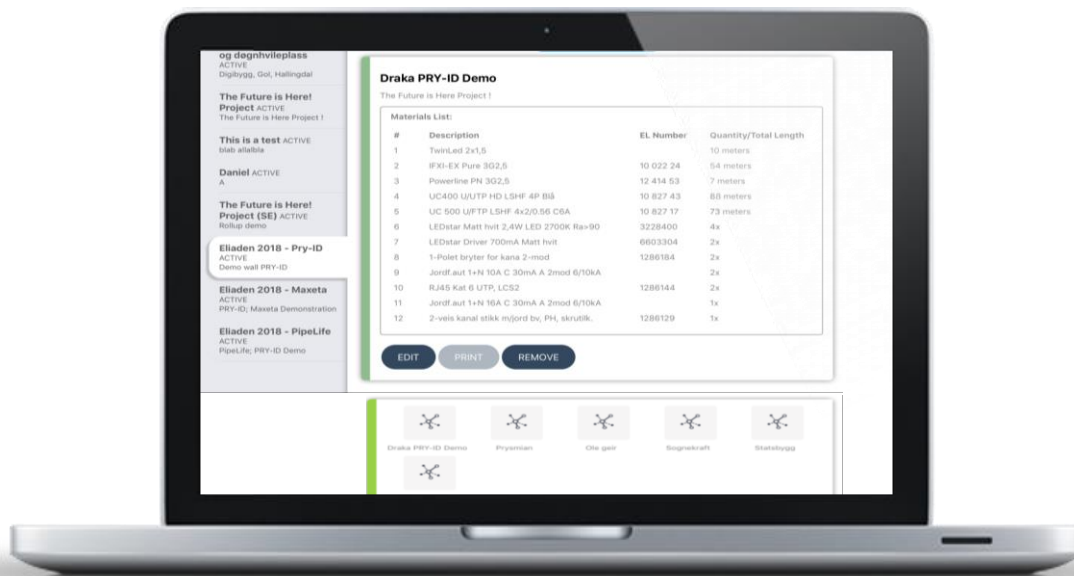
- The PRY-ID cable has an RFID tag on each meter, giving the cable its fingerprint
- Data can be accessed from the cloud based on the cable fingerprint
- The app can be used to automatically update the information

# Pry-ID

## How does it work?



## CLOUD PLATFORM



- Store and categorize all your electrical component documentation and blueprints for all projects
- Share access to the platform as needed for efficient collaboration
- Intuitive structure to ensure access to relevant modules
- Use the basic mobile app to identify cable and receive cable information in installation and maintenance work

# Pry-ID

How does it work?



## PREMIUM MOBILE APP



- Select premium features as required for particular applications
- Automatically generate documentation about used materials and blueprints for completed works
- Always receive the latest information thanks to immediate automatic updating
- Create notes and attachments for job verification

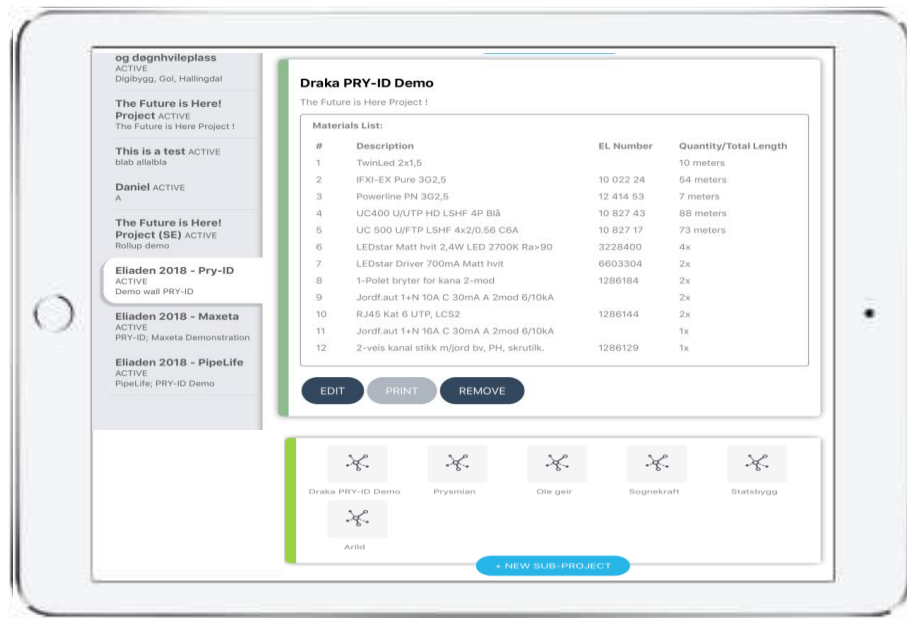


# Pry-ID

## Premium features

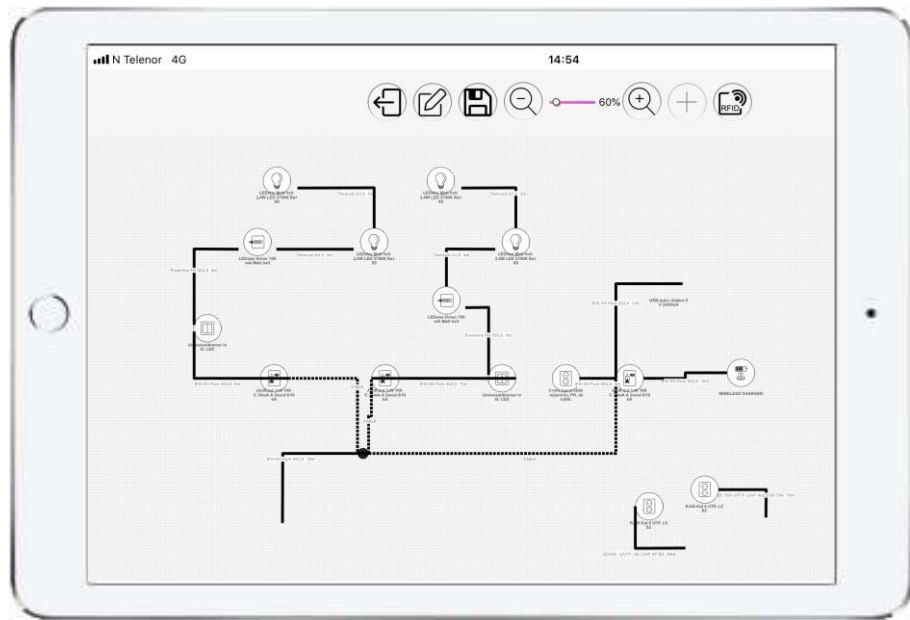
## Project Materials

- Full overview of cables and components
- Exact amounts of used cable and components, documented automatically



# Pry-ID

## Premium features

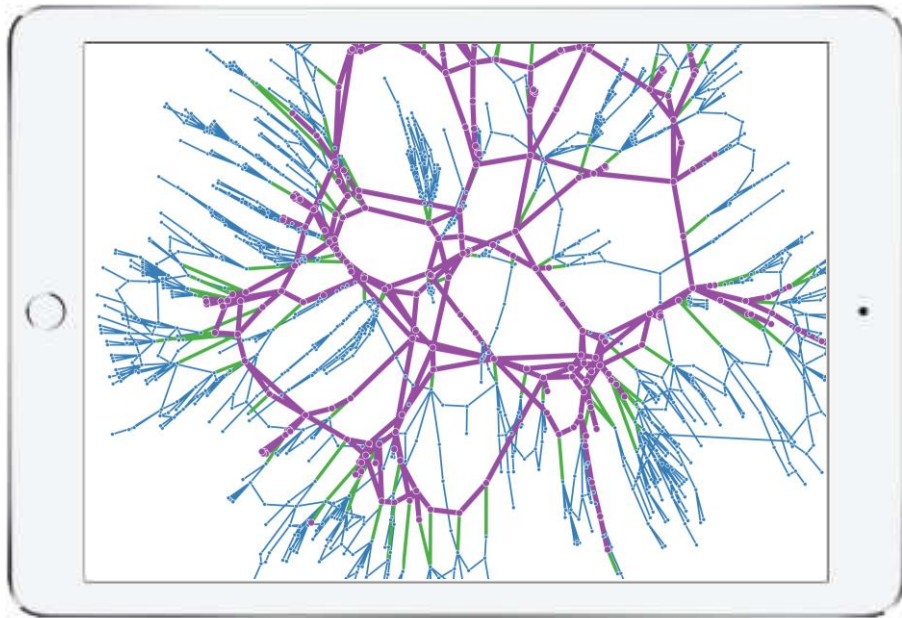


## Blueprints

- Generate blueprints by scanning pairs of components
- Update blueprints after each modification (repair, maintenance)
- Ensure that the latest version of the blueprint is up to date

# Pry-ID

## Premium features

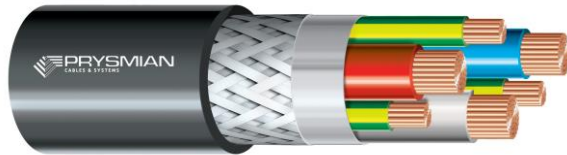


### Network Mapping

- Geographical mapping for large networks
- Generated and updated automatically
- GPS location retrieved from the scanning device

# Pry-ID

## Premium features



## Anti-theft tracking

- Keep a record of every cable's status – in stock, installed or decommissioned
- Access the record through the cable fingerprint
- Identify attempts to return stolen cable to scrap yards

You have a problem...

... Pry-ID has a solution



You have a problem...  
... Pry-ID has a solution

## **How difficult is the identification of cables during works?**

*How long does it take to find the right cable?*

*How long does it take to find the cable information?*

*What is the cost of damaging the wrong cable?*

*What is the cost of a service interruption?*

*What is the cost of injury?*

**Cable Fingerprint**

You have a problem...  
... Pry-ID has a solution

## **How difficult is cable inventory management in projects?**

*How long does it take to keep inventory updated?*

*How much extra stock do you need to keep?*

*How much does it cost you in working capital?*

**Documentation**

You have a problem...  
... Pry-ID has a solution

## How difficult is it to keep track of used materials?

*How much more cable is used by contractors compared to what was projected?*

*What is the cost of untraced cable leftovers?*

*What is the cost of cable disposal?*

*What is the environmental impact of the extra leftovers?*

**Materials tracking**

You have a problem...  
... Pry-ID has a solution

## **How difficult is it to create accurate documentation for projects and completed works?**

*Do you know the exact amount of cable and components used in the installation?*

*How long does it take to create and update documentation?*

*What happens if the blueprints are not up to date?*

**Documentation & Blueprinting**

You have a problem...  
... Pry-ID has a solution

## **What if you could trace stolen cable?**

*What is the total cost of cable being stolen after installation?*

*What is the cost of the interruption?*

*What is the cost of re-working the project?*

**Cable Fingerprint**



# Back-up slides

# Anti-Theft Package – Cable Fingerprint

## Scrap metal source verification

Stolen cable is taken to the scrap metal yard

The yard manager scans the cable RFID tags and receives information

If cable is not marked as scrapped or the person is not authorized, report stolen cable

Cable owner

Authorized handlers

Cable status

Installed

To be installed

Decommissioned

