

Features:

- Alternative solution to swing clamps
- The clamp arm may be positioned in any 45° radial position
- Magnetic piston for sensing option
- Sensing option tracks, 4X Ø4mm, 4X 3x6mm
- Built-in flow controls
- Clamp arm and spindle included
- Patented body design allows for multiple mounting options
- Non toggle-locking linkage

Applications:

- Assembly & welding fixture
- Light machining

Also Available:

See page MC-PSC-40 for mounting kits

8822



8832/
8832G



8840/
8840G



8850/
8850G



Technical Information | Holding Capacities

Model	Clamping Force at 5.5 bar [80 psi]	Bore Diameter [in] mm	Air Consumption at 5.5bar [80psi]	Weight	Seal Kit
8822	[27 lbs] 120 N	[0.87] 22	[0.033 CFM] 0,93 lpm	[0.7 lbs] 0,3 kg	882200
8832/ 8832G	[52 lbs] 231 N	[1.26] 32	[0.042 CFM] 1,19 lpm	[1.3 lbs] 0,6 kg	883200
8840/ 8840G	[102 lbs] 454 N	[1.57] 40	[0.074 CFM] 2,10 lpm	[1.9 lbs] 0,9 kg	884000
8850/ 8850G	[138 lbs] 614 N	[1.97] 50	[0.125 CFM] 3,54 lpm	[3.4 lbs] 1,5 kg	885000

Operating Pressure Range: 2.8 bar [40psig] to 8.3 bar [120psig]

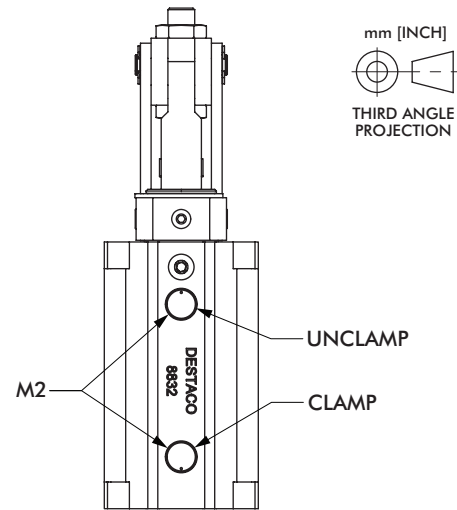
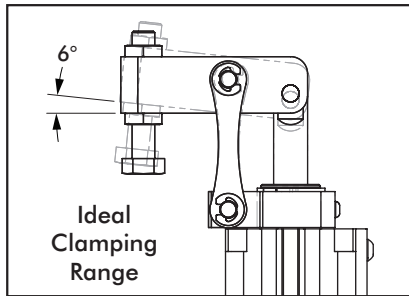
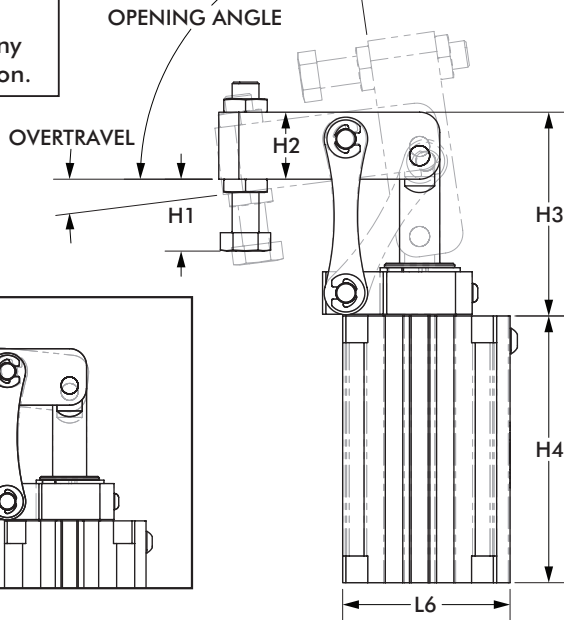
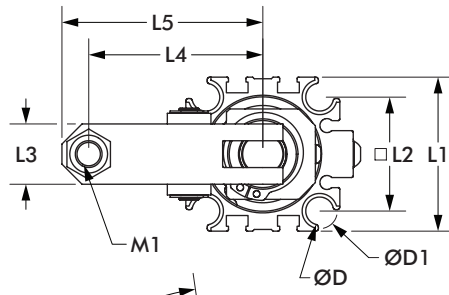
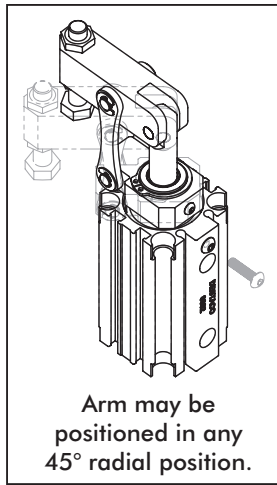
Temperature Operating Range: -10°C to 80°C [14°F to 175°F]

Exerting Force

Model	Input Pressure					Exerting Force
	[40 psi] 2,8 bar	[60 psi] 4,1 bar	[80 psi] 5,5 bar	[100 psi] 6,9 bar	[120 psi] 8,3 bar	
8822	[12 lbs] 53 N	[21 lbs] 93 N	[27 lbs] 120 N	[35 lbs] 156 N	[44 lbs] 196 N	
8832	[26 lbs] 116 N	[39 lbs] 173 N	[52 lbs] 231 N	[64 lbs] 285 N	[78 lbs] 347 N	
8840	[50 lbs] 222 N	[75 lbs] 334 N	[102 lbs] 454 N	[123 lbs] 547 N	[147 lbs] 654 N	
8850	[63 lbs] 280 N	[102 lbs] 454 N	[138 lbs] 614 N	[172 lbs] 765 N	[208 lbs] 925 N	

8800 SERIES

Pneumatic Link Clamps | Dimensions

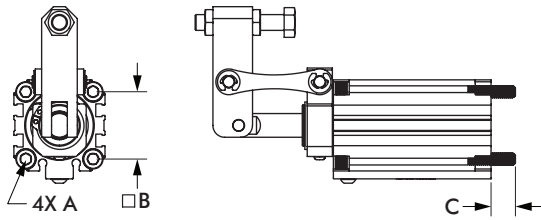


Model	Opening Angle	Over-Travel	ØD	ØD1	H1 (MIN/MAX)	H2	H3	H4
8822	85°	6°	[0.28] 7	[0.35] 9	[0.30 - 1.12] 7,5 - 28,5	[0.67] 17	[2.11] 53,5	[2.73] 69,4
8832/ 8832G			[0.33] 8,3	[0.41] 10,5	[0.37 - 1.04] 9,5 - 26,5	[0.79] 20	[2.40] 61	[3.14] 79,7
8840/ 8840G			[0.79] 20	[2.64] 67	[3.50] 88,8			
8850/ 8850G			[0.42] 10,6	[0.53] 13,5	[0.47 - 1.81] 12 - 46	[1.02] 26	[2.99] 76	[4.13] 104,8

Model	L1	L2	L3	L4	L5	L6	M1	M2
8822	[1.42] 36	[1.00] 25,4	[0.59] 15	[1.61] 41	[1.89] 48	[1.42] 36	M6-1	M5
8832/ 8832G	[1.81] 46	[1.34] 34	[0.71] 18	[2.05] 52	[2.36] 60	[1.97] 50	M8-1,25	1/8 NPT
8840/ 8840G	[2.05] 52	[1.57] 40	[0.79] 20	[2.20] 56	[2.60] 66	[2.24] 57		1/8 NPT
8850/ 8850G	[2.52] 64	[1.97] 50	[0.87] 22	[2.50] 63,5	[3.05] 77,5	[2.80] 71	M10-1,5	1/8 NPT
								G1/8

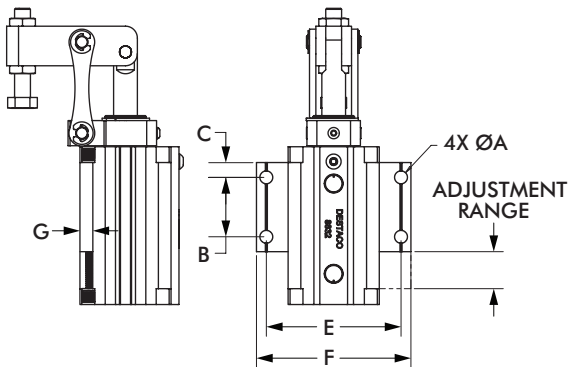
Application Note:
If using clamping arms other than standard, the length and mass must not exceed 1.5X the overall length and mass of the standard arm.

Standard Mount Kits



Mount Kit Number	For Model	A	B	C
882262	8822	M6	[1.00] 25,4	[0.43] 11
883262	8832	M8	[1.34] 34	[0.51] 13
884062	8840		[1.57] 40	[0.53] 13,5
885062	8850	M10	[1.97] 50	[0.93] 23,5

Side Mount Kits



Mount Kit Number	For Model	ØA	B	C	D	E	F	G	ADJUSTMENT RANGE
882260	8822	[0.22] 5,5	[1.18] 30	[0.20] 5	[1.57] 40	[1.91] 48,5	[2.26] 57,5	[0.23] 5,8	[0.67] 17
883260	8832	[0.26] 6,5	[1.18] 30	[0.30] 7,5	[1.77] 45	[2.68] 68	[3.07] 78	[0.26] 6,5	[0.71] 18
884060	8840		[1.38] 35	[1.97] 50	[2.91] 74	[3.31] 84	[0.87] 22		
885060	8850	[0.33] 8,5	[1.57] 40	[0.39] 10	[2.36] 60	[3.66] 93	[4.17] 106	[0.31] 8	[1.02] 26