

Fluid Level Gauge FSA Reflex

Model code

(also order example)

FSA - 500 - 1 . 0 - ... ASS REFLEX - 1SF ABS

Designation

FSA = Fluid level gauge

Nominal size

(≅ bolt centre spacing)

195; 290; 380; 500; 600; 682; 782; 922; 992

Seal material

1 = NBR (Perbunan)

2 = FKM (Viton)

Series

(specified by manufacturer)

Ambient temperature

... = -20 °C to +80 °C (no details required)

TT = Low temperature up to -40 °C

Installation conditions

ASS = Welding ends

G1/2 = G½

Type sight glass

REFLEX = Borosilicate reflex glass transparent

Quantify vision panel

1SF = 1 vision panel (up to NG 600)

2SF = 2 vision panel (from NG 682)

Certification

ABS = ABS-approval

Description

Fluid level gauge in stainless steel with vision panel made of unbreakable flat glass for use on tanks in harsh environments, such as the marine and offshore industry (stationary and mobile), and used with liquids such as hydraulic oils, lubricating oils, water-oil mixtures and biodiesel (freighters and working ships).

Protected against glass breakage! Even if this should happen, no liquid will leak from the tank due to the check valves!

Technical specifications

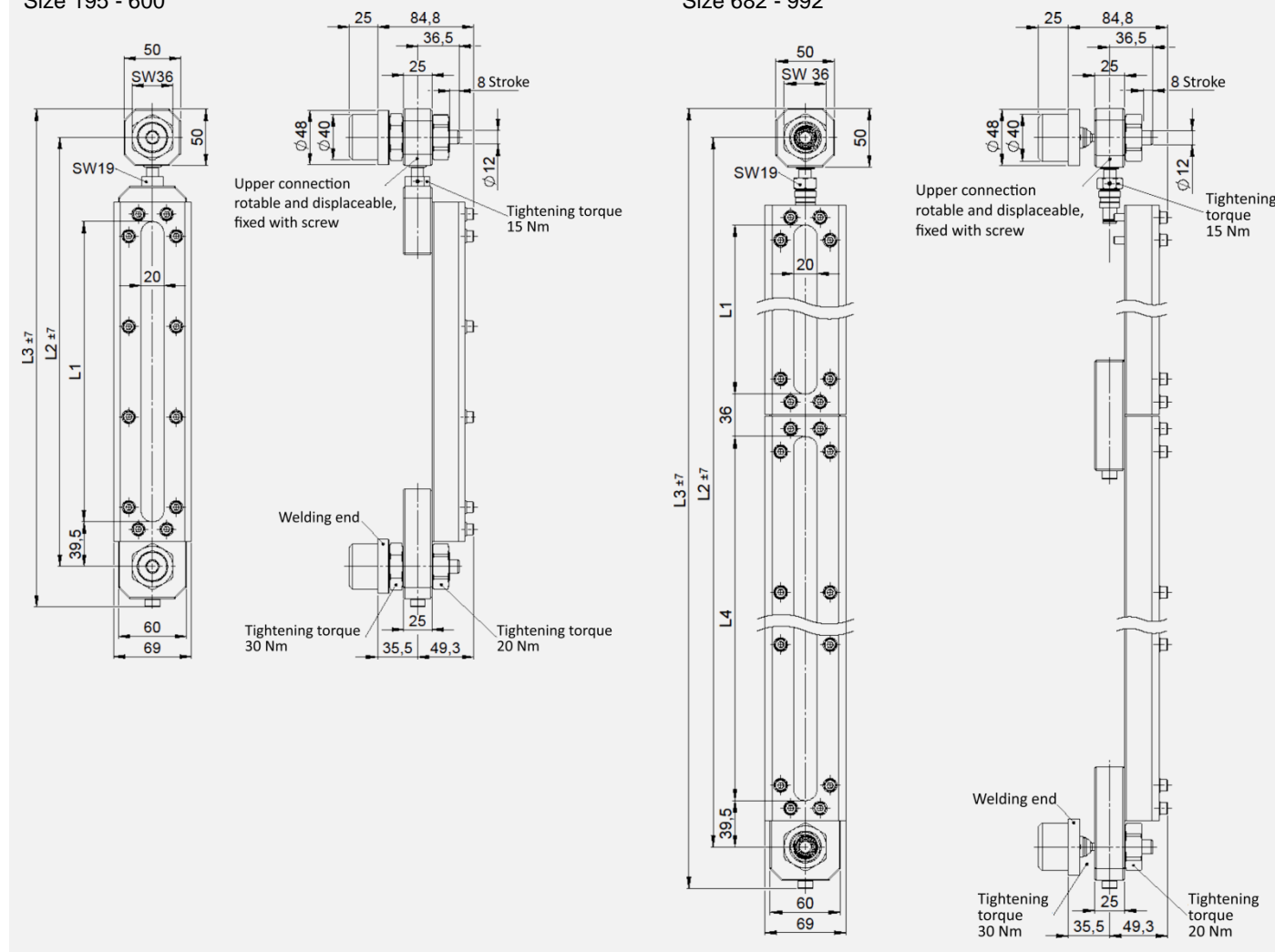
Nominal size:	195 to 992
Type of connection:	Welding ends G $\frac{1}{2}$
Material frame:	stainless steel
Material valve:	stainless steel
Material glass:	borosilicate reflex glass transparent (chemical and temperature resistant) according to DIN 7081
Medium temperature:	-25 °C to +80 °C (standard) -46 °C to +100 °C (low temperature)
Max. operating pressure:	1 bar
Viscosity range:	max 2000 mm ² /s
Shut execution:	push-to-read check valves

⚠ Note: not suitable for use with glycol and fluids containing glycol

Dimensions

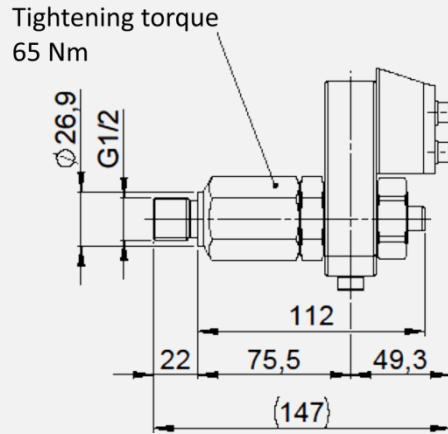
Size 195 - 600

Size 682 - 992



Type	Nominal size \cong centre distance of bolts	L1 [mm]	L2 [mm]	L3 [mm]	L4 [mm]	Quantify vision panel
FSA-195 REFLEX 1SF	195	81	195	256		1
FSA-290 REFLEX 1SF	290	176	290	351		1
FSA-380 REFLEX 1SF	380	266	380	441		1
FSA-500 REFLEX 1SF	500	386	500	561		1
FSA-600 REFLEX 1SF	600	486	600	661		1
FSA-682 REFLEX 2SF	682	266	682	743	266	2
FSA-782 REFLEX 2SF	782	316	782	843	316	2
FSA-922 REFLEX 2SF	922	386	922	983	386	2
FSA-992 REFLEX 2SF	992	356	992	1053	486	2

Connector G $\frac{1}{2}$

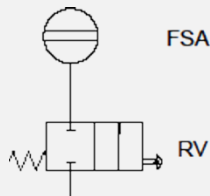
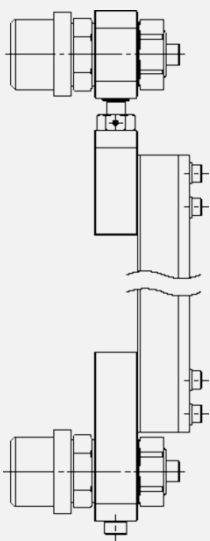


Indication of level

The check valves of the fluid level gauge are closed as standard; there is no connection to the contents of the tank. By actuating the non-return valves at the same time, they are opened and the liquid level is adjusted to the level in the tank. Thus, the current filling level of the tank can be read. When the check valves are released, the connection between tank and liquid level indicator is automatically closed.

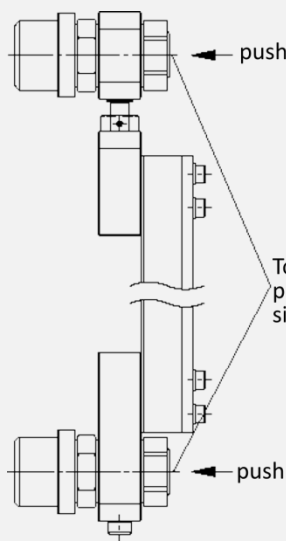
Check valves in initial position

(closed)

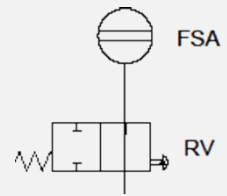


Check valves actuated

(open)



To check the fluid level push both check valves simultaneously!



Note

The information in this brochure relates to the operating conditions and applications described. For applications or operating conditions not described, please contact the relevant technical department. For applications or operating conditions not described please contact the relevant technical department.

Users bear the responsibility in all cases for determining the product's suitability in the specific application. Quantified values for product characteristics are average values for a new product that undergo a time deterioration process.

Errors and technical changes excepted.

HYDAC AS

Berghagan 4a
N-1405 LANGHUS
Tlf. +47 64 85 86 00
Epost.: firmapost@hydac.no
Web.: www.hydac.no