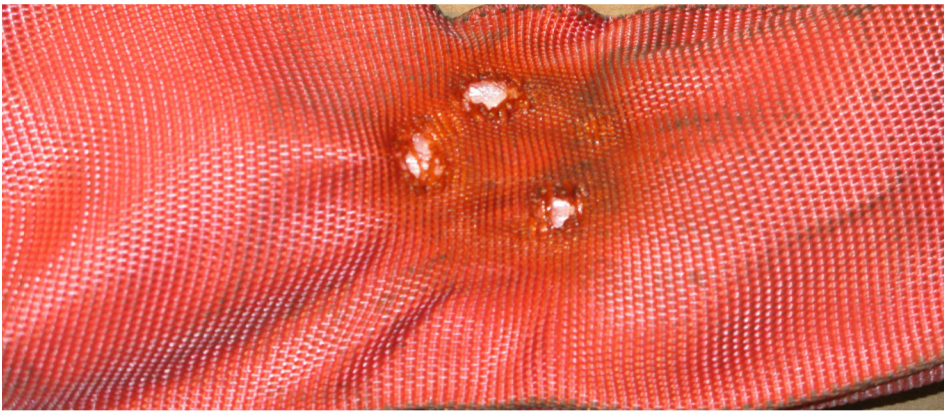


KASSATIONSKRITERIER FOR RUNDSLING

Rundsling skal efterses før brug for at opdage mulige skader og fejl



Svejsegnist skader



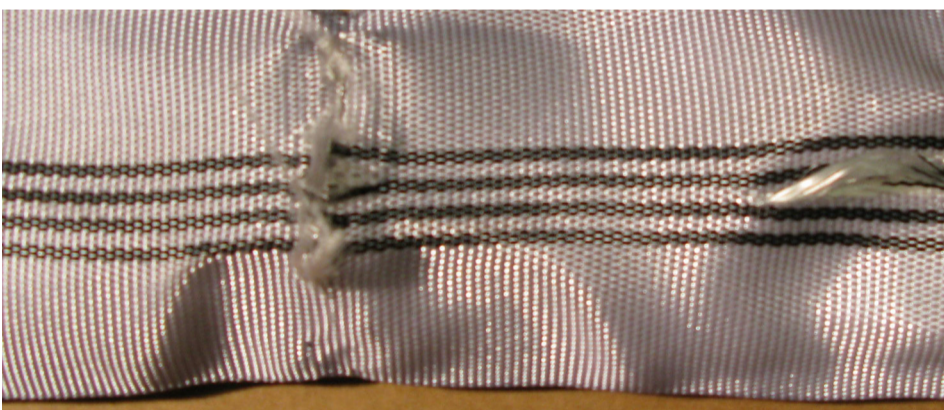
Varme- og fritionsskader



Knuder



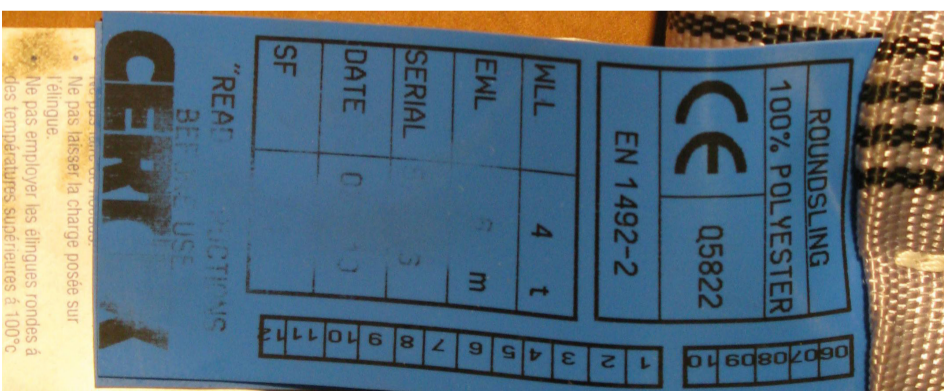
Synlig kerne



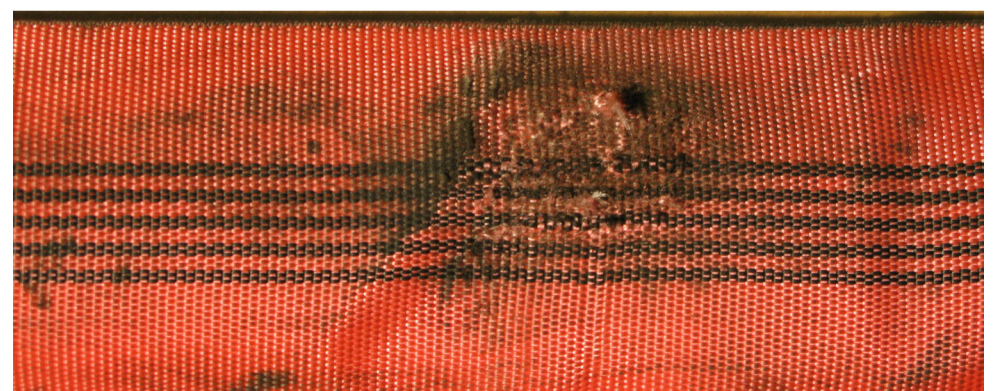
Vandrette og/eller lodrette snit



Forkert samling



Label er ikke læsbart



Kemiske skader