

# NetPro

from Wireless Logic



Available on a per  
SIM license basis

Real-time usage monitoring  
of IoT data SIMs

Secure and resilient  
connectivity via VPN

No capital  
expenditure required



## Be in total control of your M2M/IoT Data SIMs

Overlay multiple Mobile Networks with Wireless Logic NetPro and view real-time data usage across all SIMs deployed....

**...and your SIM contract remains with your existing provider.**

**Plus many more benefits:**

- Visibility of SIMs across ALL Mobile Networks through one window
- Fixed Private or Public IP
- Secure VPN with 99.79% uptime
- Stringent SLAs

## Keep control of your Data SIM estates

In the rapidly growing market of M2M/IoT connectivity, keeping a tight control of your data usage is business critical. All too often, hefty 'bill-shock' can bring significant issues to day-to-day operation.

With NetPro from Wireless Logic, you can view your entire Data SIM estates in real-time, across multiple networks, with no need to change contracts - we simply overlay your SIM with our APN in conjunction with each Mobile Network, and the NetPro VPN does the rest.

## NetPro - A secure Infrastructure-as-a-Service

NetPro is Wireless Logic's carrier-grade, secure, fast and reliable private network. It delivers a cost-effective alternative to organisations wishing to avoid major investment in their own IT architecture, leased lines and associated support costs.

NetPro today has co-located TIER 3 data centres in London to deliver secure and resilient private network capability with fully redundant interconnects. NetPro connects via dedicated hubs directly into each of our major network partners utilising APN gateways and RADIUS servers.



# OneAPN

As part of NetPro, Wireless Logic has developed oneAPN, a single point APN which is common to multiple networks. This is particularly relevant when devices are being connected across multiple networks. The APN will remain constant throughout, making the entire operation seamless as one APN is assigned to multiple devices and multiple mobile networks.

NetPro applies fixed IP addressing to mobile devices to enable secure routing from Wireless Logic's Infrastructure to the remote user's LAN. NetPro's ability to deploy a fixed IP to a module enables a device to be passive in communications - a user can securely retrieve data from a machine instead of relying on it to be sent, and send two-way instructions that remain secure at every part of the data's passage.

This approach has great advantages in the M2M/IoT world from a cost and infrastructure perspective, with no CAPEX required to be part of a resilient private network.

## One Window to see your entire SIM estate

With assigned APNs onto all of your SIMs, users can view real-time data usage via SIMPro - Wireless Logic's cloud-based platform that enables 360 degree visibility, reporting on data traffic and with built-in alerting and reporting mechanisms to keep users in complete control. SIMs can be viewed by usergroup or other defined category set up by the user themselves.

SIMPro is in itself a comprehensive Management Tool with numerous functions to monitor, manage and control SIM provisioning, tariffs and billing. Certain features can be available in addition to real-time usage reporting. Please ask for more information.

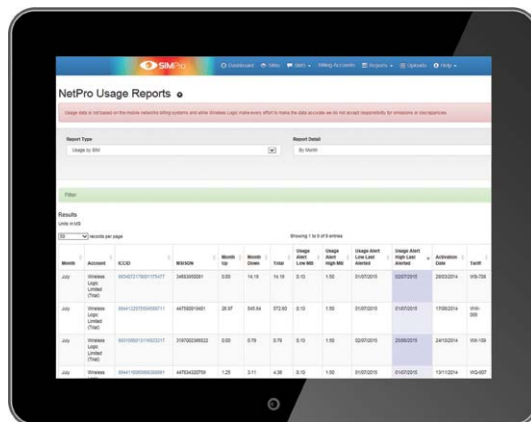
## Enabling fixed IP

NetPro is available to users already contracted with mobile networks and that are not subscribed via Wireless Logic. In this way NetPro can be overlaid onto a customer's current connectivity with data routing managed through the NetPro infrastructure. The process to install the private network infrastructure is painfree and rapid in comparison to the cost and expectations of setting up a new private network and support system.

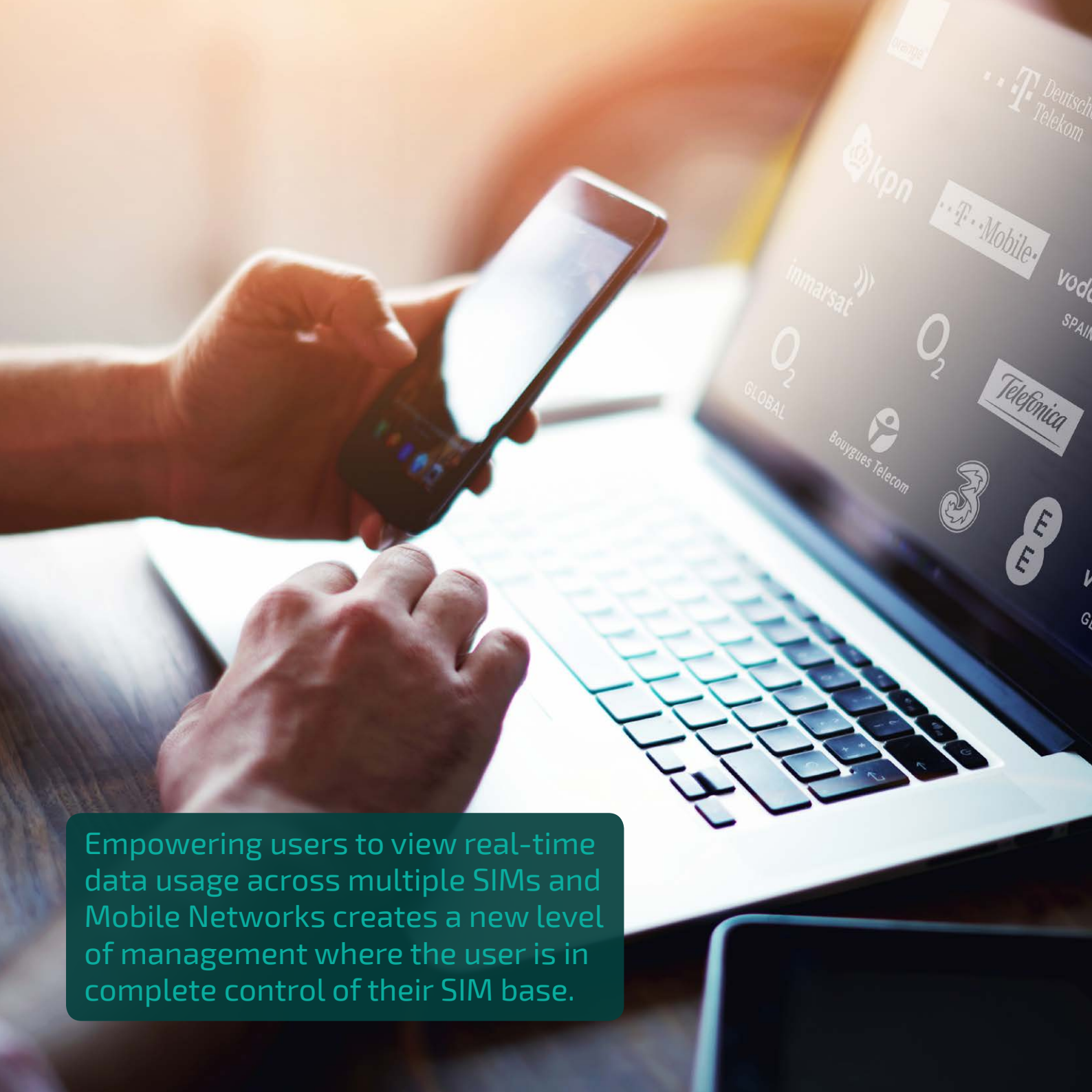
## The costs

NetPro is available on a license basis for users who have airtime contracts for their Data SIMs already in place.

For customers connected via Wireless Logic, NetPro is chargeable on a per SIM basis.



For detailed costing proposals,  
talk to Wireless Logic today  
on **+45 7022 2045**



Empowering users to view real-time data usage across multiple SIMs and Mobile Networks creates a new level of management where the user is in complete control of their SIM base.



## How NetPro works

Once APNs have been provisioned on a user's SIM, the device is given a username and password. This activates a GPRS connection and the device is authenticated by a combination of the username, password and the MSISDN number. An IP address is assigned that will allow direct routing onto the customer's LAN IP2IP.

Authenticated at a network level, TCP/IP connections are established in both directions - based on the access lists or policies set on both Wireless Logic's and the user's firewall across an Internet standard IPSec tunnel. A connection to the back-end systems is made and application layer security can be applied if required by the customer's Information Security Policy.

NetPro is mobile network agnostic. All of Wireless Logic's Mobile Network partners can route via the NetPro infrastructure.

## Public fixed IP

With Wireless Logic's fixed Public IP addressing users can connect to their device from any machine anywhere - a VPN tunnel is not required. This is an ideal solution for customers who do not have a firewall; it is open to anyone to connect to if they know the IP address. In this way, security is down to the individual user or company.

## Reporting - NetPro Usage\*

Usage Reporting is available in SIMPro for Data (not SMS, CSD, or Voice). The usage system does not distinguish between local and roaming usage.

Different types of usage monitoring are available dependant on which Mobile Network is being utilised. Where available, usage reporting can be as follows:

- Real-time on session close
- Real-time on session close and current open session updates at least daily
- Month to date usage, updated every 1-2 hours, including current open sessions

There are two types of report available:

- Usage by SIM
- Usage by Tariff

For more information on what each Mobile Network can offer, please speak to your Account Manager.

There are several different filters to help define a search for the report of your choice

- Network
- Custom Field 1-5
- Tariff
- Month
- Account

Each report can be run to show a month summary or a daily breakdown and each can be viewed either on screen or downloaded.

\*Usage Data is not based on the Mobile Network's billing systems. Whilst Wireless Logic will make every effort to make the data accurate we cannot accept responsibility for omissions or discrepancies.

# Why NetPro?

## Global reach and visibility

Wireless access to more than 600 global operators - seamlessly. View your entire SIM estate - even across multiple Mobile Networks, and monitor data usage in real-time

## Network compatibility

Works across 4G, 3G, GPRS and GSM

## Quality of service

24/7 centralised monitoring and management, focused customer service and industry-beating Service Level Agreement - with no resource required from the user

## Access agnostic

IP VPN remote services support end user connectivity from a variety of access methods, including dial, DSL, Leased Lines and MPLS

## Multiple tunneling standards

Extranet switches are flexible enough to support a variety of standards-based tunneling protocols such as L2TP, PPTP, and Internet Protocol Security (IPSec)

## IPSec client included

IPSec client allows users to create an IPSec-encrypted tunnel from their laptop to the switch at the user's site

## Centralised solution management

Enterprise service management is used to self-administer end-users 24/7 and 'push' policy and software updates directly to any PC

## Authentication services

User-provided or Wireless Logic-hosted RADIUS, internal LDAP, token integration, and X.509 certificates, all available for increased security for VPN

## Various levels of encryption

Choose from DES, 3-DES, and RC-4 encryption methods for varying security requirements

## Access manager

With NetPro's Access Manager software, manage, connect, and change access services quickly and easily as well as apply policy to end-users for increased user management and security

## Remote services with co-location

Combine the features of co-location services with the VPN enabling users to retain control of hosting equipment while benefiting from the network redundancy, reliability, and security

## Robust connectivity

99.79% uptime (percentage based on last 7 years)

## Scalable

Scalable to an unlimited number of connected devices.

## Important information

NetPro works with many of the world's leading networks and their M2M/IoT Management Platforms. However, there are a small number of platforms that are not compatible with the NetPro infrastructure. We will advise on a case by case basis.





Tel: **+45 7022 2045**  
Email: **nordic@wirelesslogic.com**

## Next steps

To see NetPro in action, Wireless Logic can set-up online demonstrations using an existing SIM from your estate. Field Trials for project testing can typically be set up in around 48 hours.

As part of the demonstration and trial process, Wireless Logic tech teams will talk through the many options of NetPro set-up to ensure the right solution is scoped for your requirement.

For more information

Call **+45 7022 2045**

Email **nordic@wirelesslogic.com**

**www.wirelesslogic.com**



**UK**

**Denmark**

**France**

**Germany**

**Netherlands**

**Spain**