

# Key Plant®

WELDING & POSITIONING EQUIPMENT

## PR MASKIN AS

### PIPE CUTTING AND BEVELLING EQUIPMENT



[www.keyplant.com](http://www.keyplant.com)

© All rights reserved

Welcome to our latest Key Plant Cutting, Beveling and End Prep line catalogue. This updated brochure includes Key Plant split frames **KPA, KPE, KPP** and **KPH** models which covers 2" to 120" (50mm-3000mm) standard range of tube, pipe or vessel outside diameters.

Key Plant split frames can be set up to cut, bevel, cut and bevel simultaneously, counterbore, face and much more. Using the advanced accessories it is easy to change from cutting to counterboring or flange facing. It only takes a few minutes to interchange from one accessory to another.

The KPA low clearance split frame line covers the standard pipe range and larger can be manufactured on request. The Key Plant split frames are designed in house within our design department onsite in the UK. Key Plant split frames are easy to use and are designed for fast and easy set up. We offer 4 types to handle every situation, **pneumatic, hydraulic, electric** and the option of **servo-electric**.

With the design of the four product lines and advanced accessories, the split frames are the most modern, robust and technically advanced machines available on today's market.

**Let's discuss your requirements, we will have a solution.**

Over the years, customer's demands have changed and by working in collaboration with our long standing customers, Key Plant has continually developed a new range of split frames that are stronger and at the same time, lighter. This is possible by using new materials available on the market today.

Key Plant's split frames are faster due to integral designed gearboxes. Our split frames are easier to use because of their design, developed with machine operators remarks and needs out in the field, feeding this information back to our design team.

The KPA stands for quality at a competitive price. By constantly improving and testing new materials we were able to achieve new goals.

Key Plant has a one-stop, everything under one roof facility. We can react faster than others on special demands. At Key Plant, we stand for quality with more than 55 years experience and that reflects on our products, **we are the only manufacturer to give a 3 year warranty on our machines! Why?... because we are Key Plant, standing behind our products!**

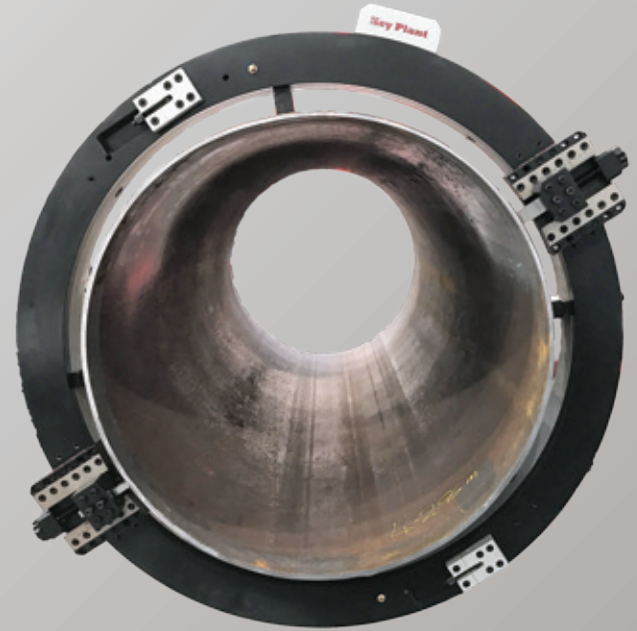
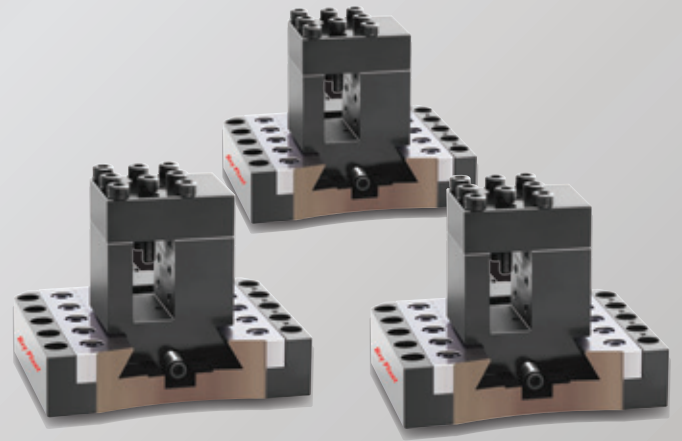




The Key Plant split frames are manufactured with high grade aluminum, this makes them light but strong. All frames are hardened after machining. Our tool holders have clear readable measurement indicators so that you can easily follow the cutting or bevelling depth. Our striker system is designed to be crash free and there are multiple striker and motor positions. Our system can work with multiple motors to create a greater force for cutting high grade and special steels.

The Key Plant split frames **are further proof of innovations from the world leaders in welding automation with more than 55 years' experience in designing world-class machines.** It started with the design of manipulators and soon we developed and built equipment for major turnkey automation projects. In keeping with our tradition we are doing it again, setting the bar higher with our range of pipe preparation machines.

**Key Plant OD mounted split frames are more than a cutting tool, they are part of a complete machining system designed to handle most applications.**



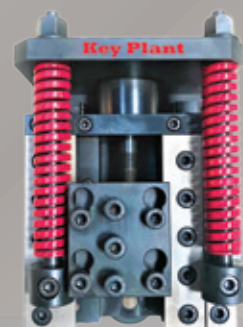
Flange Facing Option



Standard Cutting & Bevelling Tools for KPA Machines



Spring Loaded Toolbox



# KPE SERIES ELECTRIC DRIVEN

Model	KPE2-6	KPE3-8	KPE6-12	KPE10-16	KPE14-20	KPE16-22	KPE18-24
Motor Power	1000W-2000W						
Voltage	220-240 V - 115 V						
Frequency	50 / 60HZ						
Working Current	6 A						
MAX Wall Thickness	≤30mm (Standard Tool Slide)						
Working Range in mm (OD)	50-168	80-230	168-325	274-426	355-508	400-560	457-610
Working Range in inch (OD)	2-6	3-8	6-12	10-16	14-20	16-22	18-24
Weight (KG)	40	45	55	60	75	80	85

Model	KPE20-26	KPE22-28	KPE24-30	KPE26-32	KPE30-36	KPE36-42	KPE42-48
Motor Power	1000W-2000W						
Voltage	220-240 V - 115 V						
Frequency	50 / 60HZ						
Working Current	6 A						
MAX Wall Thickness	≤30mm (Standard Tool Slide)						
Working Range in mm (OD)	508-660	550-715	600-762	660-813	762-914	914-1066	1066-1230
Working Range in inch (OD)	20-26	22-28	24-30	26-32	30-36	36-42	42-48
Weight (KG)	95	110	115	120	140	195	230

# KPP SERIES PNEUMATIC DRIVEN

Model	KPP2-6	KPP3-8	KPP6-12	KPP10-16	KPP14-20	KPP16-22	KPP18-24
Air Pressure	0.6 - 0.8Mpa (Tested at entrance to motor)						
Air Consumption	1500 - 2000L/Min						
MAX Wall Thickness	≤30mm (Standard Tool Slide)						
Working Range in mm (OD)	50-168	80-230	168-325	274-426	355-508	400-560	457-610
Working Range in inch (ID-OD)	2-6	3-8	6-12	10-16	14-20	16-22	18-24
Weight (KG)	41.5	42.5	53	60	77	79	85

Model	KPP20-26	KPP22-28	KPP24-30	KPP26-32	KPP30-36	KPP36-42	KPP42-48
Air Pressure	0.6 - 0.8Mpa (Tested at entrance to motor)						
Air Consumption	1500 - 2000L/Min						
MAX Wall Thickness	≤30mm (Standard Tool Slide)						
Working Range in mm (OD)	508-660	550-715	600-762	660-813	762-914	914-1066	1066-1230
Working Range in inch (OD)	20-26	22-28	24-30	26-32	30-36	36-42	42-48
Weight (KG)	96	114	116	120.5	144.5	197.5	236

# HYDRAULIC DRIVEN **KPH SERIES**

Model	KPH2-6	KPH3-8	KPH6-12	KPH10-16	KPH14-20	KPH16-22	KPH18-24
Power Supply	← 380 - 440V 3Ph 50/60Hz →						
Power	← 12.5Mpa - 2-60L/Min →						
MAX Wall Thickness	← ≤30mm (Standard Tool Slide) →						
Working Range in mm (OD)	50-168	80-230	168-325	274-426	355-508	400-560	457-610
Working Range in inch (OD)	2-6	3-8	6-12	10-16	14-20	16-22	18-24
Weight (KG)	41.5	42.5	53	60	77	79	85

Model	KPH20-26	KPH22-28	KPH24-30	KPH26-32	KPH30-36	KPH36-42	KPH42-48
Power Supply	← 380 - 440V 3Ph 50/60Hz →						
Power	← 12.5Mpa - 2-60L/Min →						
MAX Wall Thickness	← ≤30mm (Standard Tool Slide) →						
Working Range in mm (OD)	508-660	550-715	600-762	660-813	762-914	914-1066	1066-1230
Working Range in inch (OD)	20-26	22-28	24-30	26-32	30-36	36-42	42-48
Weight (KG)	96	114	116	120.5	144.5	197.5	236

**Cutting & Beveling at any angle**



# KPA-HD Heavy Duty Split Frame Pipe Cutting & Beveling Machine

Heavy-duty split frame pipe cutting and beveling machine, designed to cut, bevel, single point, counterbore and face on the heavy wall pipe and flanges. 8 Models are available from 12" to 120". Able to divide into two parts and easy to install. It is comprehensively used in pipework of oil, gas, petroleum, chemical, boiler, nuclear power, and power supply construction.

## FEATURES & BENEFITS

Used for heavy wall pipe cutting and beveling, and flange facing

8 Models, working range for pipe OD 12"-120".

Clamping by multi-point jaws.

Split-frame technology, easy to install on the pipeline.

Cold cutting and chamfering do not affect the material of the pipe.

Automatic feeding, cutting and chamfering at the same time.

Variety of beveling shape: "U", "V", "J", double "V", compound bevels.

Pneumatic, servo electric controller and hydraulic drive.

Non-standard model can be customized



## PNEUMATIC DRIVEN

Model	KPP-12-24HD	KPP-24-36HD	KPP-36-48HD	KPP-48-60HD
Pipe Clamping Capacity in mm (OD)	Φ305-610	Φ610-914	Φ914-1240	Φ1240-1524
Pipe Clamping Capacity in inch (OD)	12"-24"	24"-36"	36"-48"	48"-60"
Wall Thickness	≤110	≤110	≤110	≤110

Model	KPP-60-75HD	KPP-75-90HD	KPP-90-105HD	KPP-105-120HD
Pipe Clamping Capacity in mm (OD)	Φ1524-1910	Φ1910-2290	Φ2290-2680	Φ2680-3050
Pipe Clamping Capacity in inch (OD)	60"-75"	75"-90"	90"-105"	105"-120"
Wall Thickness	≤110	≤110	≤110	≤110

## SERVO ELECTRIC DRIVEN

Model	KPS-12-24HD	KPS-24-36HD	KPS-36-48HD	KPS-48-60HD
Pipe Clamping Capacity in mm (OD)	Φ305-610	Φ610-914	Φ914-1240	Φ1240-1524
Pipe Clamping Capacity in inch (OD)	12"-24"	24"-36"	36"-48"	48"-60"
Wall Thickness	≤110	≤110	≤110	≤110

Model	KPS-60-75HD	KPS-75-90HD	KPS-90-105HD	KPS-105-120HD
Pipe Clamping Capacity in mm (OD)	Φ1524-1910	Φ1910-2290	Φ2290-2680	Φ2680-3050
Pipe Clamping Capacity in inch (OD)	60"-75"	75"-90"	90"-105"	105"-120"
Wall Thickness	≤110	≤110	≤110	≤110

Above parameters are for reference purpose only.



## HYDRAULIC DRIVEN

Model	KPH-12-24HD	KPH-24-36HD	KPH-36-48HD	KPH-48-60HD
Pipe Clamping Capacity in mm (OD)	Φ305-610	Φ610-914	Φ914-1240	Φ1240-1524
Pipe Clamping Capacity in inch (OD)	12"-24"	24"-36"	36"-48"	48"-60"
Wall Thickness	≤110	≤110	≤110	≤110

Model	KPH-60-75HD	KPH-75-90HD	KPH-90-105HD	KPH-105-120HD
Pipe Clamping Capacity in mm (OD)	Φ1524-1910	Φ1910-2290	Φ2290-2680	Φ2680-3050
Pipe Clamping Capacity in inch (OD)	60"-75"	75"-90"	90"-105"	105"-120"
Wall Thickness	≤110	≤110	≤110	≤110

Above parameters are for reference purpose only.

### HYDRAULIC

Powerful drive, High-efficiency  
Stable Performance, Low noise,  
Anti-explosion

Ideal for heavy wall thickness & large  
size pipe

**Hydraulic requirement:**  
28-50L/min @13MPa

**Electric requirement:**  
400V 3PH 50/60Hz Rated

**Pressure:** 13MPa

**Rated flow:** 28L/min

### PNEUMATIC

Explosion Proof

Stable Performance

Easy to maintenance

**Air requirement:**  
1500-3500L/min @0.63-0.8Mpa

**Power:** 2HP,6HP

Double motor for a large split frame  
or heavy wall

### NC ELECTRIC

Powerful drive, High-efficiency Low  
noise , Stable Performance

Ideal for heavy wall thickness & large  
size pipe

**Electric requirement:**  
230V 1PH 50/60Hz - 400V 3PH 50/60Hz

**Power:** 2.0KW - 6.0KW

Double motor for a large split frame or  
heavy wall

Wall CNC controlled with speed  
regulation



MOTORS FOR UNDERWATER USE AVAILABLE.  
ALL KEY PLANT AIR MOTORS HAVE BEEN DEVELOPED BY MODEC FRANCE

# KPI Line Fast, Easy Setup, Self-Centering Design

Key Plant **KPI** bevel machines are light weight, self-centering and easy to operate. The KPI range of bevel machines are designed for site and field work. Due to their innovative design, fast and high precise quality of the bevel, they can also be used in the workshop. The Key Plant KPI can be used to make any kind of bevel shape (V - J - compound - facing - counterbore - shape specific to your drawing). Due to the number of cutting tools, they can carry out operations simultaneously. Thanks to the new generation of high performance motors and innovative engineering, customers can easily bevel the most difficult materials, including super duplex. All KPI machines are supplied with variable speed motors to extend the lifetime of your cutting blades especially on hard materials. With a Key Plant conversion kit, you can convert the KPI's in minutes to a flange facing machine and with different shaft options you can extend the working range. Today, the Key Plant pipe beveling machines are the fastest, strongest and most reliable machines on the market.

## KPI SERIES

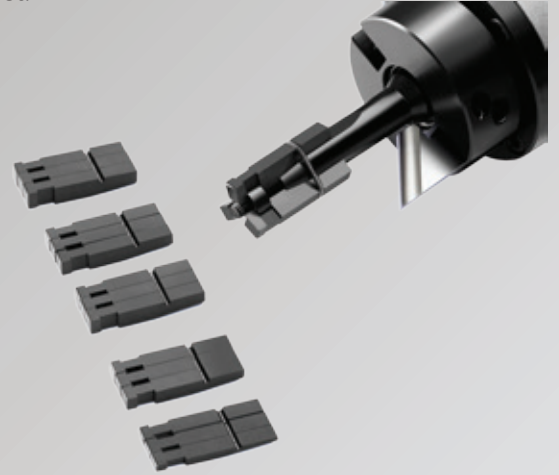
Multiple Key Plant technologies

Manufactured in the UK

Large stocks available for sales and rental

Strong, reliable and robust

Precise positioning and control



## KPI1

The **KPI1** is a highly portable self-centering bevel machine, for use on an extensive range of pipe diameters. Thanks to the powerful motors, customers can easily bevel high alloyed, high performance materials. The KPI1 is able to clamp, on the inside of pipes from 0.5" (15mm) to 1" (25.4mm) *smaller shaft options are available*. Machines are available in three variations **pneumatic**, **electric** (110v or 230v) or **battery** powered (approved for spark free environment). Due to the optimum engineered design, expensive conversion kits between the motors are not needed. The KPI1 is designed in such a way that the customer can easily switch between different power options on location. The KPI1 can bevel up to 10mm wall thickness with the standard tool kit (optional kit to 15mm available). It incorporates a specific designed clamp changing system, that needs no external tooling to interchange between the different clamping diameters.

Model	KPI1-A	KPI1-E	KPI1-B
Driven	Pneumatic	Electric	Battery Driven
Power Supply	900L/Min - 0.6Mpa	110-220V 1Ph 50/60Hz	18V Battery
Clamping Range	15-25.4mm = 0.5"-1"	15-25.4mm = 0.5"-1"	15-25.4mm = 0.5"-1"
Wall Thickness	Max 10mm	Max 10mm	Max 10mm
Rotation Speed	75r/Min	1-75r/Min	15-35-75r/Min
Weight	6Kg	6Kg	5Kg
Tool Holders	2	2	2





The **KPI2** is a light weight, ergonomic, self-centering bevel machine, for use on an extensive range of pipe diameters. Due to the high-performance motors you can bevel the toughest of materials easily. The KPI2 is able to clamp on the inside of pipes from 1" (25.4mm) to 3" (79mm). *smaller or bigger shafts options are available.* Machines are available in three variations **pneumatic, electric** (110v or 230v) or **battery** powered (approved for spark free environment). Due to the optimum engineered design, expensive conversion kits between the motors are not needed. The KPI2 is designed in such a way that the customer can easily switch between different power options on location. The KPI2 can bevel up to 20mm wall thickness with the standard tool kit (optional kit to 35mm available). It incorporates a specific designed clamp changing system, and an **optional kit** with stainless steel clamping feet is available.

Model	KPI2-A	KPI2-E	KPI2-B
Driven	Pneumatic	Electric	Battery Driven
Power Supply	900L/Min - 0.6Mpa	110-220V 1Ph 50/60Hz	18V Battery
Clamping Range	25.4-79mm = 1"-3"	25.4-79mm = 1"-3"	25.4-79mm = 1"-3"
Wall Thickness	Max 20mm	Max 20mm	Max 20mm
Rotation Speed	75r/Min	1-75r/Min	15-35-75r/Min
Weight	13Kg	13Kg	12Kg
Tool Holders	3	3	3



OPTIONAL MILITARY QUALITY DUST AND WATER RESISTED IP67 STORAGE BOX FOR ALL MACHINES AND OPTIONS.



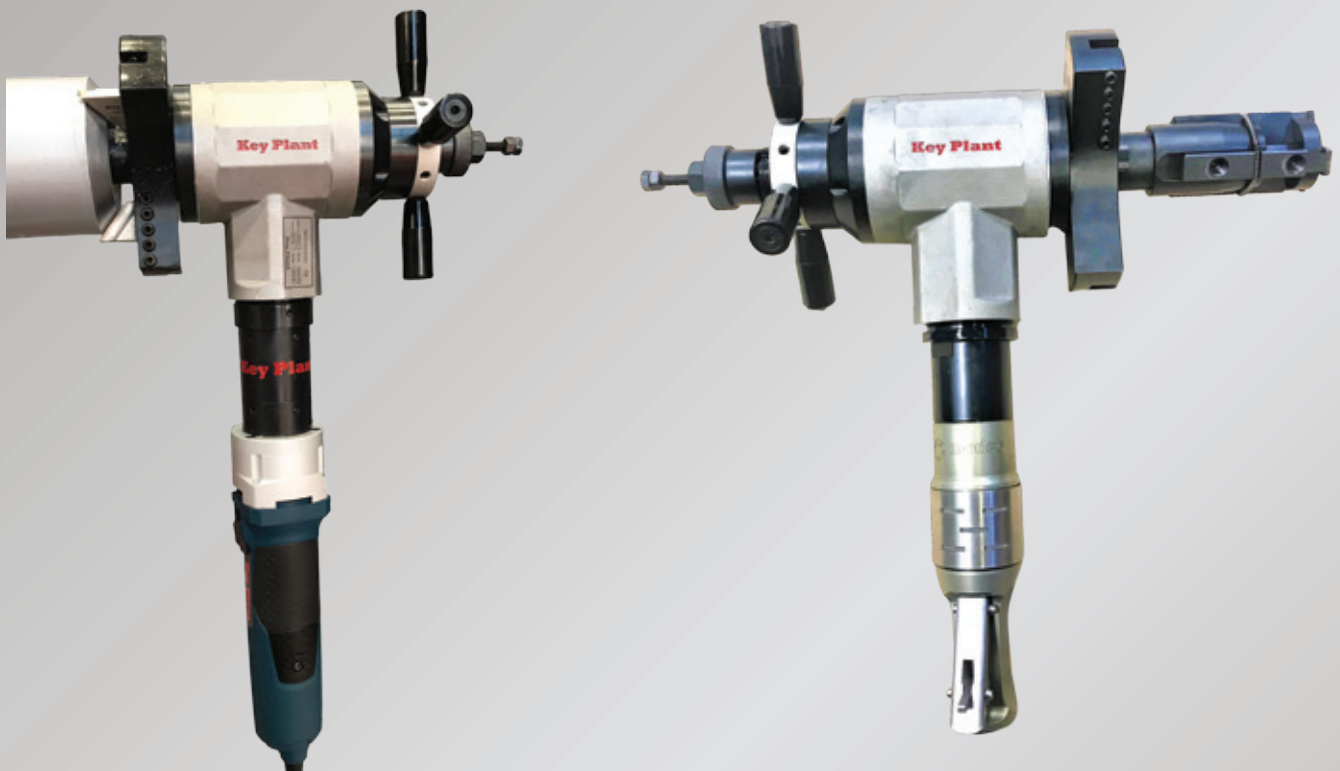
FOR THE HEAVIER MACHINES THEY COME WITH A DURABLE CASE WITH WHEELS AND PULL HANDLE.



# KPI3

The **KPI3** is a powerful and light weight, self-centering bevel machine, for use on an extensive range of pipe diameters. Due to the optimum motor solution you can bevel high mechanical strength materials easily. The KPI3 is able to clamp on the inside of pipes from 2.3" (60mm) to 6.2" (159mm). *smaller or bigger shafts options are available.* Machines are available in three variations **pneumatic, electric** (110v or 230v) or **battery** powered (approved for spark free environment). Due to the optimum engineered design, expensive conversion kits between the motors are not needed. The KPI3 is designed in such a way that the customer can easily switch between different power options on location. The KPI3 can bevel up to 30mm wall thickness with the standard tool kit (optional kit to 45mm available). It incorporates a specific designed clamp changing system, and an **optional kit** with stainless steel clamping feet is available. Key Plant has a one-stop, everything under one roof facility, we can design special and bespoke bevelling heads for specific jobs on request.

Model	KPI3-A	KPI3-E	KPI3-B
Driven	Pneumatic	Electric	Battery Driven
Power Supply	900L/Min - 0.6Mpa	110-220V 1Ph 50/60Hz	18V Battery
Clamping Range	60-159mm = 2.3"-6.2"	60-159mm = 2.3"-6.2"	60-159mm = 2.3"-6.2"
Wall Thickness	Max 30mm	Max 30mm	Max 30mm
Rotation Speed	75r/Min	1-75r/Min	15-35-75r/Min
Weight	27Kg	27Kg	27Kg
Tool Holders	3	3	3

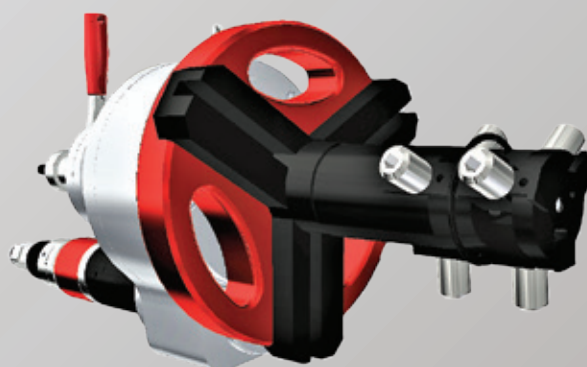


Standard Cutting & Bevelling tools for KPI1-KPI2-KPI3-KPI4-KPI5 Machines



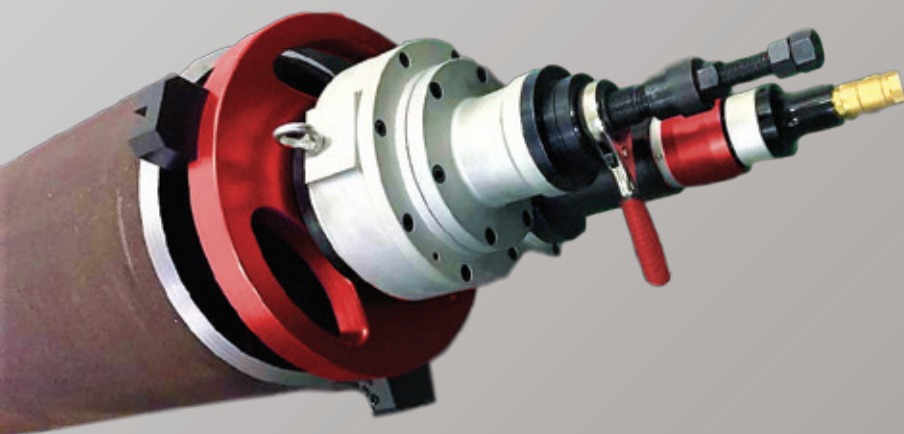
The **KPI4** is an extremely powerful self-centering bevel machine, for use on an extensive range of pipe diameters. Due to the high-performance motors you can bevel high corrosion resistance materials easily. The KPI4 is able to clamp on the inside of pipes from 2.5" (65mm) to 8.4" (215mm). *bigger shafts options are available to up 12"*. Machines are available in two variations **pneumatic** and **electric**. Due to the optimum engineered design, expensive conversion kits between the motors are not needed. The KPI4 is designed in such a way that the customer can easily switch between different power options on location. The KPI4 can bevel up to 40mm wall thickness with the standard tool kit (optional kit to 50mm available). It incorporates a specific designed clamp changing system, and **optional kits** for elbow and flange bevelling plus stainless steel clamping feet are available.

Model	KPI4-A	KPI4-E
Driven	Pneumatic	Electric
Power Supply	1200L/Min - 0.6Mpa	110-220V 1Ph 50/60Hz
Clamping Range	65-215mm = 2.5"-8.4"	65-215mm = 2.5"-8.4"
Wall Thickness	Max 40mm	Max 40mm
Rotation Speed	60r/Min	1-50r/Min
Weight	40Kg	38Kg
Tool Holders	3	3



**Models KPI4 and KPI5 are now standard equipped with a Modec motor.**

Model	KPI5-A	KPI5-E
Driven	Pneumatic	Electric
Power Supply	1200L/Min - 0.6Mpa	110-220V 1Ph 50/60Hz
Clamping Range	145-355.6mm = 5.7"-14"	145-355.6mm = 5.7"-14"
Wall Thickness	Max 40mm	Max 40mm
Rotation Speed	25r/Min	1-22r/Min
Weight	65Kg	63Kg
Tool Holders	3	3



The **KPI5** is the largest in the series of self-centering, internal bevel machines, for use on an extensive range of pipe diameters. Due to the optimum motor solution you can bevel the toughest of materials easily including duplex and super-duplex. The KPI5 is able to clamp on the inside of pipes from 5.7" (145mm) to 14" (355.6mm). *bigger shafts options are available to up 12"*. Machines are available in two variations **pneumatic** and **electric**. Due to the powerful and innovative engineered design, expensive conversion kits between the motors are not needed. The KPI5 is designed in such a way that the customer can easily switch between different power options on location. The KPI5 can bevel up to 40mm wall thickness with the standard tool kit (optional kit to 50mm available). It incorporates a specific designed clamp changing system, and **optional kits** for elbow and flange bevelling plus stainless steel clamping feet are available. Key Plant has a one-stop, everything under one roof facility, we can design special and bespoke bevelling heads for specific jobs on request.



# KPO Series

The **KPO series** is a compact and precise piece of machinery, it is the fastest portable cutting and bevelling machine on the market, mainly used for high capacity throughput.

Lightweight

Self centering

Quick and easy set up

Aluminum housing

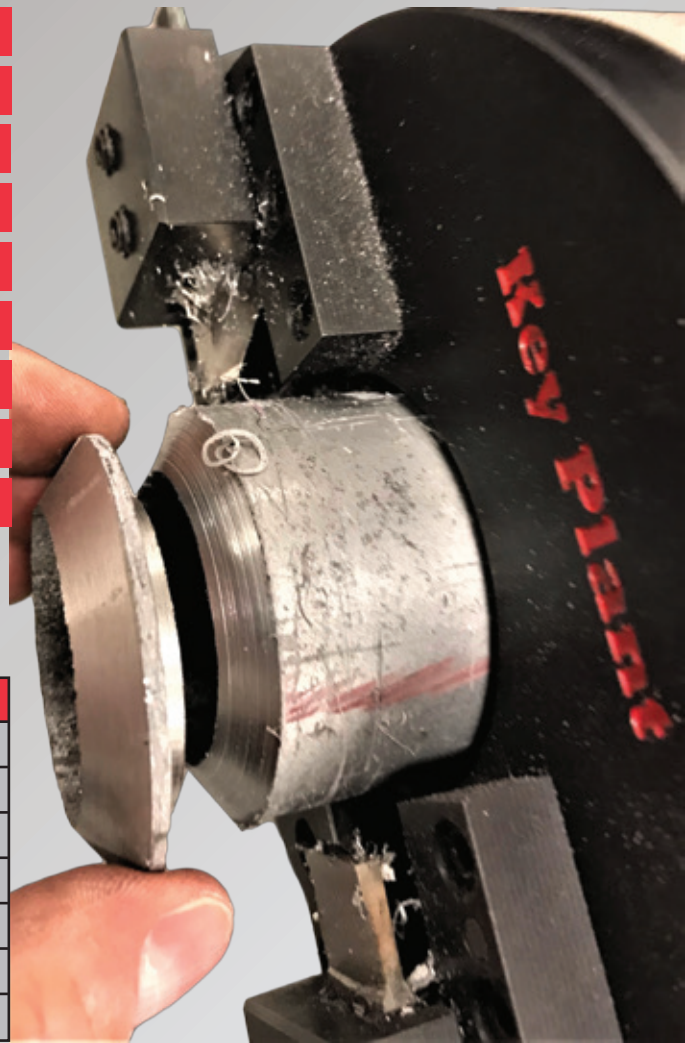
Strong and reliable

Easy to operate

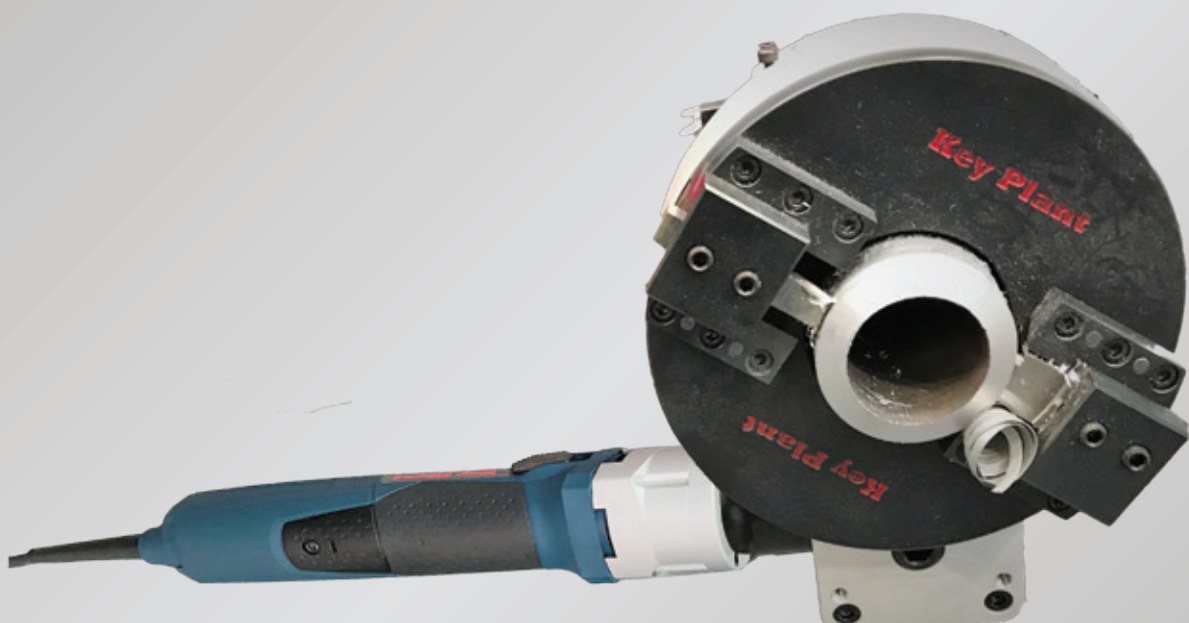
Simultaneous cutting and bevelling

Automatic tool feed

Variable speed motor



Model	KPO1	KPO2
Driven	Electric	Electric
Power Supply	110-220V 1Ph 50/60Hz	110-220V 1Ph 50/60Hz
Clamping Range	14-63.5mm = 0.5"-2.5"	57-114.3mm = 2.2"-4.5"
Wall Thickness	Max 15mm	Max 15mm
Rotation Speed	30-130r/Min	30-130r/Min
Weight	10Kg	15Kg
Tool Holders	2	2



**KPB series** has been specifically designed for use in power plant engineering, construction, chemical industries, marine, shipbuilding and onsite repairs. It has the capacity to operate in confined spaces.

Ergonomic

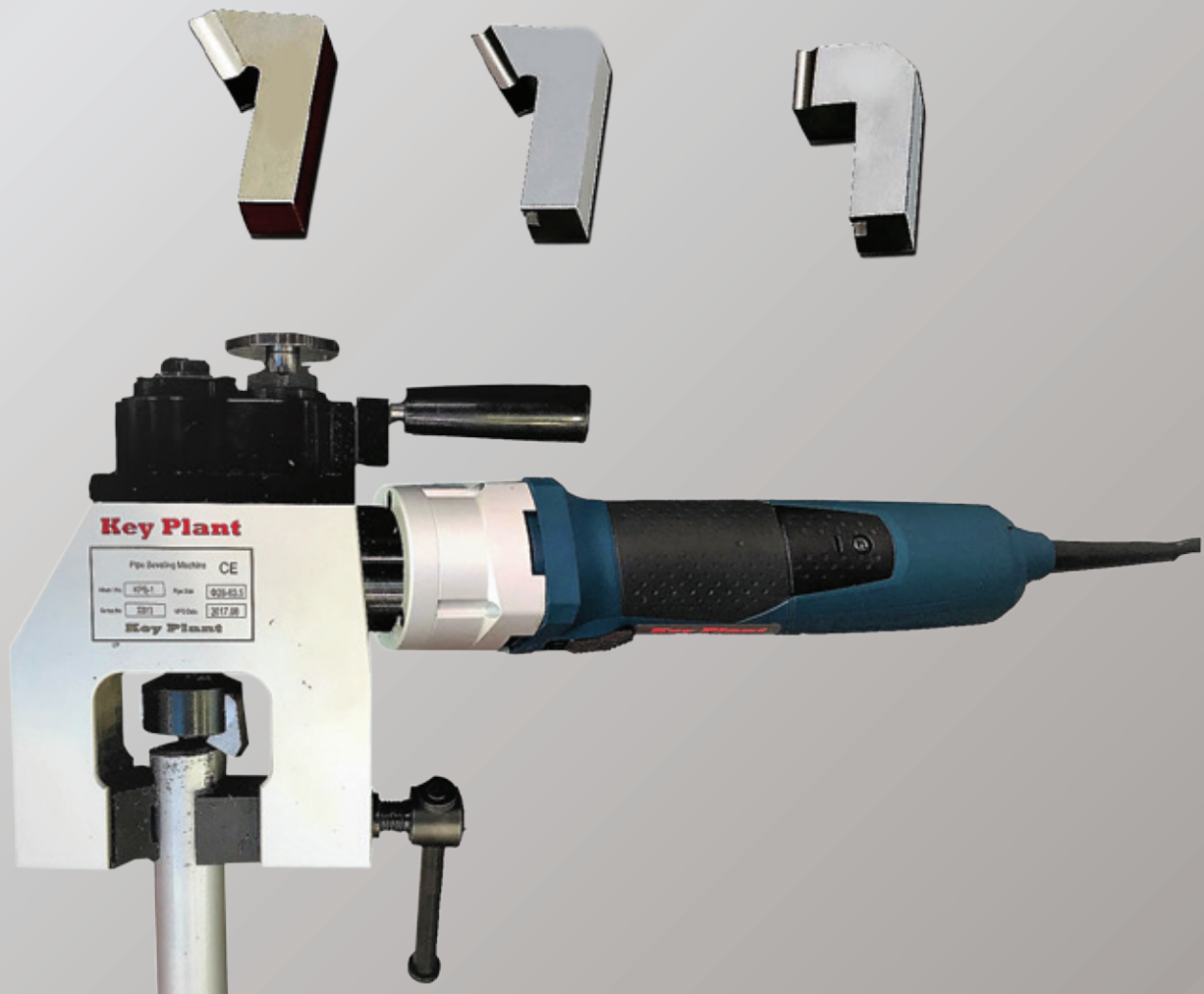
Automatic tool feed

Mobile

Optimum motor solution

Lightweight and powerful

Model	KPB1	KPB2
Driven	Electric	Electric
Power Supply	110-220V 1Ph 50/60Hz	110-220V 1Ph 50/60Hz
Clamping Range	28-63.5mm = 1.10"-2.5"	42-76.2mm = 1.65"-3"
Wall Thickness	Max 15mm	Max 15mm
Rotation Speed	85r/Min	85r/Min
Weight	10Kg	14Kg
Tool Holders	1	1



Key Plant specialises in the manufacture of multiple tooling technologies. Our scope includes in-house tooling design, simulation, engineering, manufacture, installation and on-site support. With multiple tooling options, material grades, carbide inserts, chip breakers for parting, external and internal grooving. Key Plant offers high productivity and long tool life, ensuring our customers produce high quality, high volume components.

**Contact Key Plant, the complete pipe cutting and bevelling manufacturer.**

Sizes stated are shown in metric, nearest imperial equivalent are for reference purpose only.

## ORB SERIES

### KEY PLANT ORB-105B | ORBITAL FACING & BEVELLING

The **Key Plant** ORB-105B is a new orbital pipe facing machine that was designed for pipe end facing and beveling with a small diameter and thin wall thickness.

OD mounted, equipped with special collect and tool, easy installation, fast and efficient processing. It is small in size, lightweight and easy to carry. It is suitable for facing and beveling of pipe end in electronics, pharmaceutical, food, beverage, solar energy, semiconductor and chemical industry. **100% Weld quality guaranteed.**



Auto feeding, high precision

One collect clamp for each size pipe

Driven by battery motor

Clean cutting, no water or oil

Pipe end absolute vertical, no deformation, no burs, perfect weld-prep

Fast installation, fast facing is a few seconds

Can be used for alloy steel, carbon steel, stainless steel and aluminum

Motor	Battery
Pipe Range	3-25, 4mm
Tool Stroke	5mm
Max Pipe Thickness	0,5-3,5mm
Rotating Speed	300rpm
Battery Voltage	14,4 V
Net Weight	2,3Kg

### KEY PLANT ORB-110 | ORBITAL FACING

The **Key Plant** ORB-110 is a new orbital pipe facing machine that covers a wide range of diameters.

This machine adopts a Metabo motor drive, compact design, lightweight and portable. After facing, the end face is straight without burrs and ready to be welded with an orbital welding machine. **100% Weld quality guaranteed.**



Cold facing, does not affect the material of the pipe

100% Straight and burr-free end surface

Auto feeding

Fast facing in a few seconds

High safety, the pipe is stationary

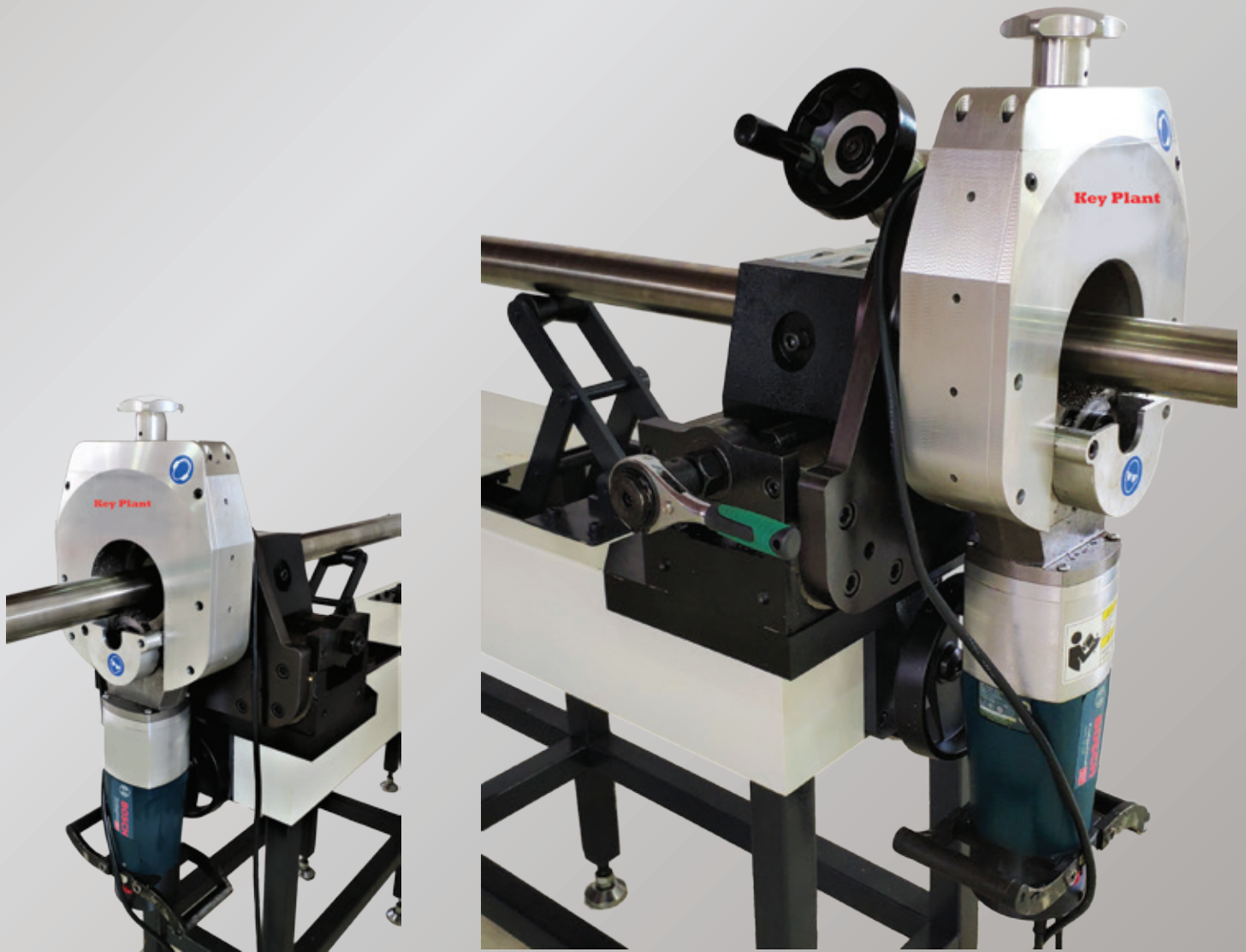
Metabo motor drive, super

Small size, lightweight, suitable for workshop operations and field construction

Big pipe range in 1 machine

Motor	Battery
Capacity	12,7-100mm
Manufacturer	Key Plant
Warranty	3 years
Wall Thickness	0.5 - 5mm
Weight	19Kg





The **Key Plant** Orb-120 is a new orbital pipe cutting machine optimized by our company. We combined domestic and foreign comparable products. This machine adopts a Bosch motor drive, superpower, compact design, lightweight and portable. After cutting, the end face is absolutely straight without burrs and ready to be welded manually or with an orbital welding machine. Available bevel blades for bevelling 30°-37° or 45°. **100% Weld quality guaranteed.**

Cold cutting, does not affect the material of the pipe

Vertical incision without deformation, burr-free end surface

Simultaneous installation of cutting and bevelling saw blades

Fast, cutting or bevelling in a few seconds

High safety, the pipe is stationary, the saw blade rotates around the pipe

Bosch motor drive, superpower.

Small size, lightweight, suitable for workshop operations and field construction

Saw blade compatible with AXXAIR, +GF+, DCS and other brands

Motor	Battery
Capacity	10-120mm
Manufacturer	Key Plant
Warranty	3 years
Wall Thickness	0.5 - 7mm
Dimensions	550 x 560 x 50mm

# KEY PLANT PLB-500 PLATE BEVELLING



**KEY PLANT PLB-500** plate beveling machine is designed to bevel small and large plates. Thanks to the self-centering and self-feeding process, you can use the machine in static mode for small plates and on a trolley for the large plates.

For the special jobs you can even take the head of the trolley and only place the head on the plate. The PLB500 automatically moves over the plate and has a digital speed control for travel and a digital speed control for the cutting head speed, therefore this machine has the great advantage that it can cut all kinds of different materials, including plastic!

Capacity	8 - 50mm
Manufacturer	Key Plant
Warranty	3 Years

Mains	400V-3P-50/60Hz
Cutting Motor Power	4,0Kw
Travel Motor Power	0,12Kw
Bevel Angle	15-16°
Max Bevel	50mm
Bevel Depth	5-30mm
Surface Roughness	Ra3, 2-Ra12,5
Max Process Speed	3000mm/Min
Feeding Speed	0-1000mm/Min
Minimum Plate Length	300mm
Minimum Plate Width	100mm
Plate Thickness	8-50mm
Single Step Depth	5mm
Weight	210Kg

Beveling shape: V-Y-K-X

Angle adjustable; 15° to 60°

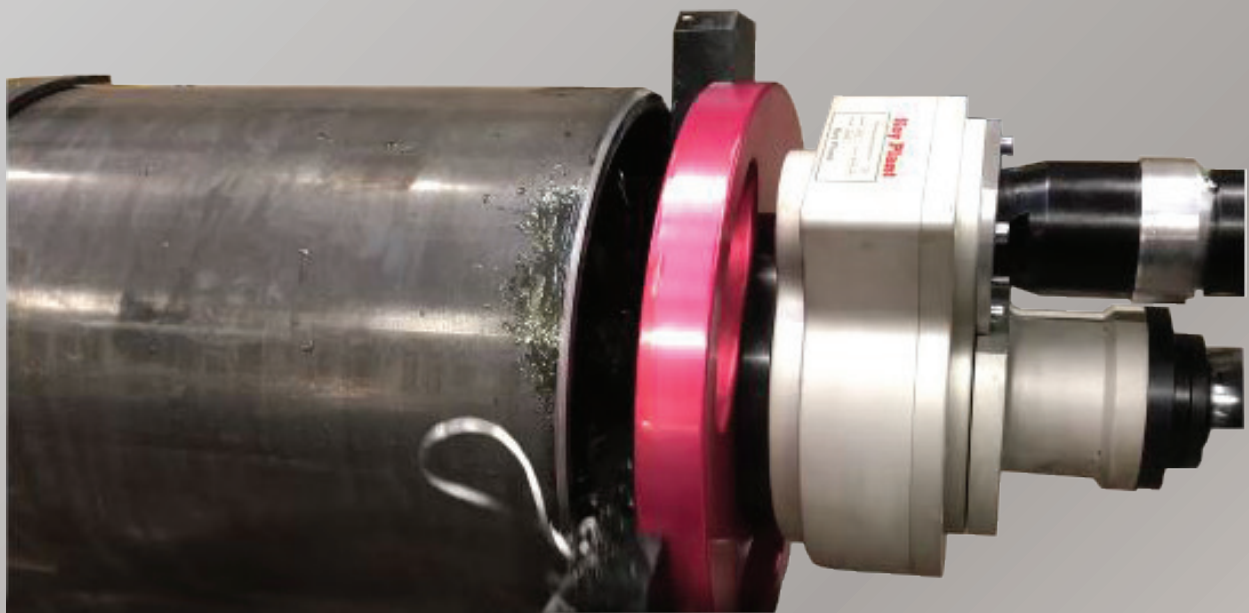
Surface roughness: Ra3.2 - Ra6-3

Cold cutting, does not affect the material

Plate thickness, range 8-50mm, max. groove slope width is 45mm

Suitable for carbon steel, stainless steel, alloy steel, cast iron, hard plastic, etc...

Double-digit display control system, cutting speed and feeding are adjustable





# HIGH SPEED SEMI AUTOMATED CUTTING AND BEVELLING MACHINE

## KPSA RANGE

The Key Plant Stationary pipe cutting and bevelling machine is a practical and durable pipe cutting bevelling machine. It was developed for cutting and bevelling for pipe prefabrication. Adopt variable frequency motor drive, electric clamping system, self-centering system. It is suitable for the processing of U, V, J, Y and bevelling shape of carbon steel, stainless steel and alloy steel pipes. The pipe length setting system and pipe conveying system are optional. An advantage with high speed, high precision, high quality of cutting and easy to control. It is the main equipment for all kinds of pipe prefabrication. Suitable for cutting and processing pipes in the oil, chemical, natural gas, nuclear power and other industries. **Range for 30-914mm pipe OD.**

5 Models are available in pipe OD: 30-914mm

Cold cutting, does not affect the pipe material

Simple button controller

Electric clamping system, self-centering, accurately fixed

Water cooling systems, increasing the life of machine and tools

Variety of bevelling shapes : U-V-J, double V, compound bevels

Cutting and bevelling and can also be used for double bevelling

Machine up/down design perfectly adapted to different diameters in the same pipe Conveyor

Model	KPSA-168	KPSA-325	KPSA-508	KPSA-610	KPSA-914
Working Range OD	30-168	50-325	273-508	325-610	610-914
Wall Thickness	3-30mm	5-30mm	5-30mm	5-30mm	5-30mm
Rotating Speed	0-50Rpm	0-30Rpm	0-20Rpm	0-15Rpm	0-10Rpm

## CAPABILITY

Pipe cutting • Pipe end bevelling • Pipe facing • Cutting and bevelling  
Compound bevelling • Counterboring • Grooving.

Other bevelling shape, angle and pipe material  
**(please declare before you order).**

## TOOLING

Options of form type and insert type tools.

Available for cutting all thicknesses and materials of pipe and bevelling at any required angle.

## OPTION PIPE CONVEYER

According to the need to customize.

Optional pipe conveyor and automatic length adjustment systems are formulated with a highly efficient logistics system and form a pipe cutting and bevelling prefabricated production line.

### Power requirement:

400V - 50/60Hz - 3Ph

**Tool post quantity:** 2 or 4

**Angle deviation:** Max 0,5mm

**Tool engage:** Mechanical Manual

**Tool retract:** Manual

**Min pipe length:** 200mm

**Up/Down travel:** 300mm



# HIGH SPEED SEMI AUTOMATED CUTTING AND BEVELLING MACHINE

## KPHSAA RANGE

The Key Plant Stationary pipe cutting and bevelling machine is a practical and durable pipe cutting bevelling machine. It was developed for cutting and bevelling for pipe prefabrication. Adopt variable frequency motor drive, electric clamping system, self-centering system. Automatic feeding, electric up/down system. It is suitable for the processing of U, V, J, Y and bevelling shape of carbon steel, stainless steel and alloy steel pipes. Pipe length setting system and pipe conveying system are optional. Advantage with high speed, high precision, high quality of cutting and easy to control. It is the main equipment for all kinds of pipe prefabrication. Suitable for cutting and processing pipes in the oil, chemical, natural gas, nuclear power and other industries. **Range for 30-914mm pipe OD.**

5 Models are available in pipe OD:30-914mm

Cold cutting, does not affect the pipe material

PLC control system, Touch-screen controller

Electric clamping system, self-centering, accurately fixed

Automatic feeding by program

Water cooling systems, increasing the life of machine and tools

Variety of bevelling shape: U-V-J, double V, compound bevels

Cutting and bevelling and can also be used for double bevelling

Machine up/down design perfectly adapted to different diameters in the same pipe conveyor

Model	KPSA-168	KPSA-325	KPSA-508	KPSA-610	KPSA-914	
Working Range OD	30-168	50-325	219-508	273-610	610-914	
Wall Thickness	3-30mm	5-30mm	6-30mm	6-30mm	6-30mm	
Rotating Speed	0-60Rpm	0-45Rpm	0-30Rpm	0-20Rpm	0-15Rpm	
Motor Power (Kw)	Cutting	3.0	4.0	7.5	11	11
	Clamping	0.75	0.75	0.75	0.75	0.75
	Up/down	0.75	0.75	1.5	1.5	1.5
	Feeding	0.75	0.75	0.75	0.75	0.75

### Power requirement:

400V – 50/60Hz – 3Ph

**Up/Down travel:** 300mm

**Feeding travel:** 150mm

**Pipe length limit:** 200mm

**Tool post quantity:** 2 or 4

**Angle deviation:** ± 0.5mm

**Tool feeding:** Automatic by program

**Tool retract:** Automatic by program





## CAPABILITY

Pipe cutting • Pipe end bevelling • Pipe facing • Cutting and bevelling  
Compound bevelling • Counterboring • Grooving.

Other bevelling shapes, angles and pipe materials  
**(please declare before you order).**

## TOOLING

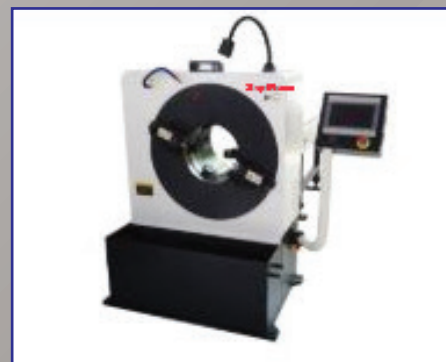
Options of form type and insert type tools.

Available for cutting all thicknesses and materials of pipe and bevelling at any required angle.

## OPTION PIPE CONVEYER

According to the need to customize.

Optional pipe conveyer and automatic length adjustment systems are formulated with a highly efficient logistics system and form a pipe cutting and bevelling prefabricated production line.



# HIGH SPEED FULL AUTOMATED CUTTING AND BEVELLING MACHINE

## KPHSFA RANGE

The Key Plant High speed full automated cutting and bevelling machine is a kind of efficient pipe cutting and bevelling prefabrication CNC machine. Designed to cut, bevel, single point on the pipe with high speed. Considerable heavy wall and for any type of material. Adopt servo motor drive, with a Key Plant CNC system, double hydraulic clamping system, self-centering system. Pipe length setting system and pipe conveying system are optional. These series of machines have an advantage with their high speed, high precision, high quality of cutting and easy to control. It is the main equipment for all kinds of pipe prefabrication. Suitable for cutting and processing pipes in the oil, chemical, natural gas, nuclear power and other industries. **Range for 50-914mm pipe OD**

4 models are available in pipe OD:50-914mm

Cold cutting, does not affect the material of the pipe

High speed cutting, feeding control by program

Machine up/down design, and control by program

Exclusive CNC system makes everything easier

Built-in water cooling systems that extend the life of the machine and tools

Both front and rear hydraulic clamping system, self-centering, accurately fixed

Variety of bevelling shape: U - V - J, double V, compound bevels

Cutting and bevelling and can also be used for double bevelling

Independent servo motor-driven, can realize feed and retract with correlation, differential, independent

Model	Range	Thickness (mm)		Rotating	Motor Power (Kw)			
	OD mm	Single	Multi	rpm	Cutting	Clamping	Up/down	Feeding
<b>KP-320</b>	Φ50-320	4-25	50	0-50	5.5	1.5	0.55	2.0
<b>KP-450</b>	Φ130-450	5-25	50	0-42	7.5	1.5	0.55	2.0
<b>KP-610</b>	Φ300-610	5-25	50	0-35	11	1.5	1.5	2.0
<b>KP-914</b>	Φ610-914	6-25	50	0-25	11	1.5	2.2	3.0

Above parameters just for reference only

### CAPABILITY

Pipe cutting • Pipe end bevelling • Pipe facing • Cutting and bevelling  
Compound bevelling • Counterboring • Grooving.

Other bevelling shapes, angles and pipe materials  
(please declare before you order).

### TOOLING

**Insert type:**

**Insert:** CSS or Carbide

**Tool holder:** 400Cr

**Kinds:** Cut off, bevelling, double bevelling, compound bevelling

**Angle:** 0°, 30°, 37.5°, double 30°, 37°, 37.5° +10°

#### Power requirement:

400V - 50/60Hz - 3Ph

**Up/Down travel:** 300mm

**Feeding travel:** 100mm

**Pipe length limit:** 300mm

**Tool post quantity:** 2 or 4

**Angle deviation:** ± 0.5mm

**Vertical deviation:**

± 0.5mm @300mm pipe OD







# PR MASKIN AS

WWW.PRMASKIN.NO

## Key Plant

WELDING & POSITIONING EQUIPMENT

### Head Office & Works

Bode Business Park  
Ball Haye Green, Leek  
Staffordshire, UK, ST13 6BW

Tel: +44 (0)1538 388 388  
Fax: +44 (0)1538 381 509  
[www.keyplant.com](http://www.keyplant.com)

### Rental Warehouse

Regent Road  
Liverpool  
Merseyside, UK, L3 7DS

email: [sales@keyplant.com](mailto:sales@keyplant.com)  
email: [rental@keyplant.com](mailto:rental@keyplant.com)  
email: [europa@keyplant.com](mailto:europa@keyplant.com)

