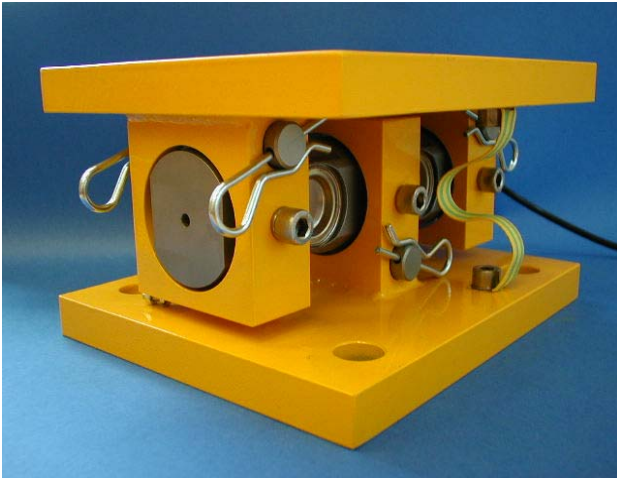


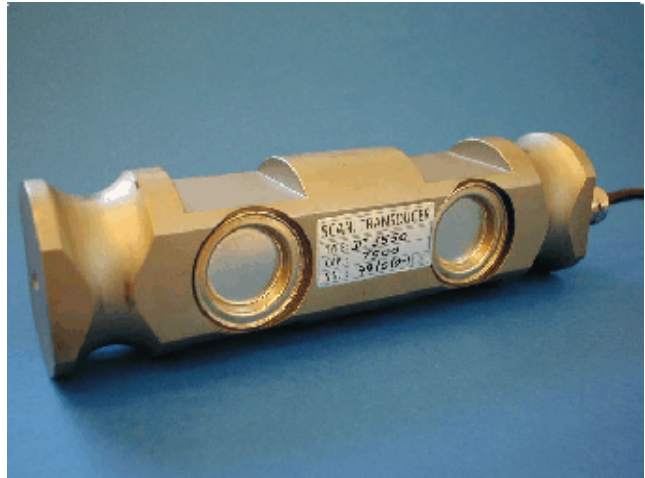
# DAN-TRANSDUCER ApS

SILO LOAD CELLS AS DOUBLE SHEAR BEAMS  
CAPACITIES: 5 - 100 TONS

MODEL DT 3550



MODEL DT 3550



LOAD CELL DT 3550

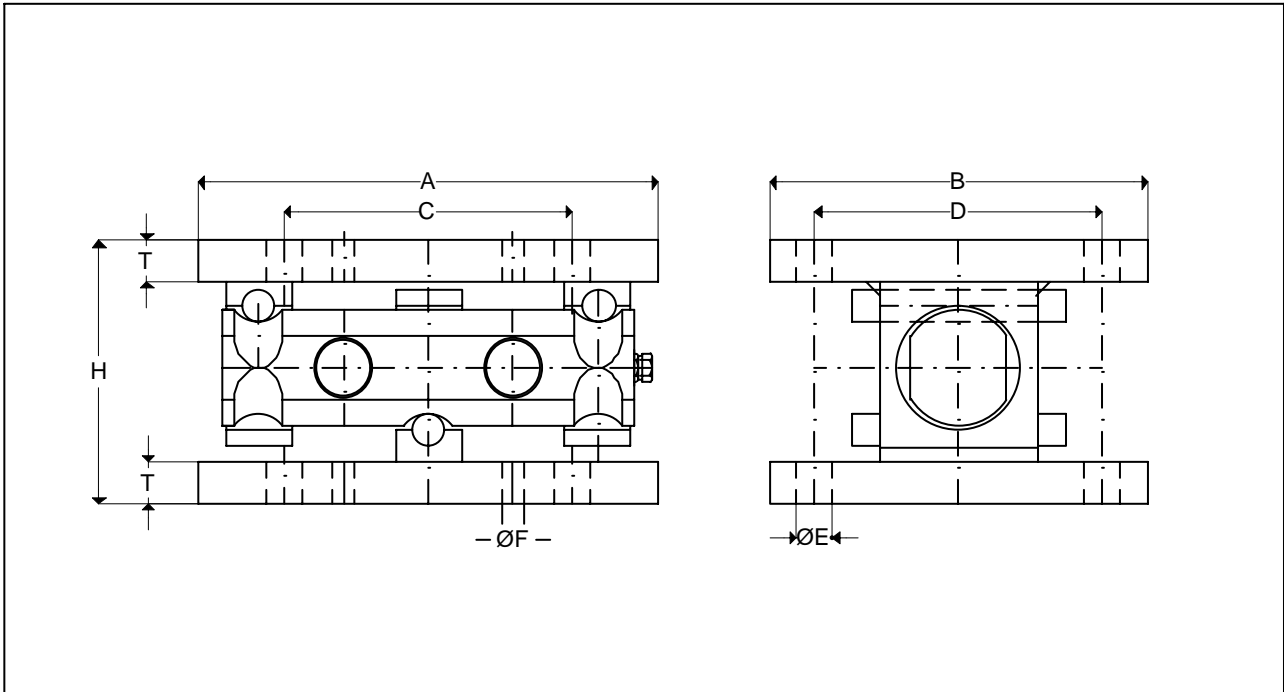
## COMPLETE SERIE OF LOAD CELLS WITH MOUNTINGS FOR SILOS, TANKS ETC.

- STAINLESS STEEL LOAD CELLS
- MOUNTINGS IN PAINTED STEEL WITH OPTION IN STAINLESS STEEL
- FULLY WELDED LOAD CELL UP TO IP 68
- 3000 DIVISIONS
- LOW COST INSTALATION WITH LOW PROFILE
- INTEGRATED LIFT OFF PREVENTION
- MODEL DT 3550 ALLOWS EXPANSION OF SILO OR TANK
- OPTION: LOW COST JACKING POSSIBILITY
- DT 3550 ACCEPTS OUT OF LEVEL INSTALLATION: 3 DEGREES

**DAN-TRANSDUCER ApS**

Fiskerengen 5, DK-3250 Gilleleje - Phone: +45 48 22 44 02 - Fax: +45 48 22 44 06  
[www.dan-transducer.com](http://www.dan-transducer.com), E-mail: [info@dan-transducer.com](mailto:info@dan-transducer.com)

# DAN-TRANSDUCER ApS



## DIMENSIONS

MODEL	RANGES	SIZE	H	A	B	C	D	T	E	F	CABLE
3550	2 AND 5 TE	A	88	150	125	105	95	14	13	13	6 M
3550	5,10 AND 20 TE	B	116	200	165	140	125	18	18	13	10 M
3550	20,30 AND 50 TE	C	160	280	230	175	175	25	22	21	10 M
3550	75 AND 100 TE	D	182	300	250	240	190	25	26	21	10 M

## SPECIFICATIONS

	UNITS	DATA
Standard load ranges	TE	2, 5, 10, 20, 30, 50, 100
Full Load Output	mV/V	2,0 $\pm$ 0,15%
Excitation, dc or ac	Volt	10(15)
Safe service load	%	150
Ultimate Load	%	300
Combined Error	%	<0,03
Repeatability	%	<0,02
Output at Zero Load	%	<2
Input Resistance	Ohms	750 $\pm$ 25
Output Resistance	Ohms	700 $\pm$ 3
Operational Temp.	$^{\circ}\text{C}$	-20 to +80
Compensated Temp.	$^{\circ}\text{C}$	-10 to +40
Temp. Coeff. of Zero	%/ $^{\circ}\text{C}$	<0,005
Temp. Coeff. of Span	%/ $^{\circ}\text{C}$	<0,004
Creep in 30 Minutes	%/ $^{\circ}\text{C}$	<0,02
Insulation	M Ohms	>500 at 100V.dc

## ELECTRICAL CONNECTION

CABLE	POLYURETHANE $\varnothing$ 5,4 mm
+EXCITATION	RED
-EXCITATION	BLUE
+SIGNAL	GREEN
-SIGNAL	YELLOW

## DAN-TRANSDUCER ApS

Fiskerengen 5, DK-3250 Gilleleje - Phone: +45 48 22 44 02 - Fax: +45 48 22 44 06  
[www.dan-transducer.com](http://www.dan-transducer.com), E-mail: [info@dan-transducer.com](mailto:info@dan-transducer.com)