

# M VersaPro™ Dicer

---

Next Generation Protein Powerhouse

---



**URSCHTEL®**

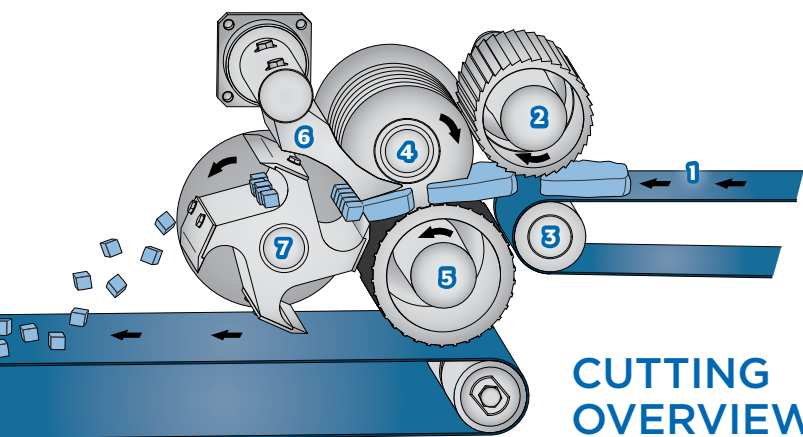
The Global Leader in Food Cutting Technology



# M VersaPro™

## D I C E R

Building on the Urschel Models M and M6, meet the next generation protein processing powerhouse. The new M VersaPro™ (MVP) Dicer provides the best in sanitary design and the ultimate in versatile cutting of proteins. The MVP offers 33% increased feeding capacity versus the standard M6 due to wider belts, optimized cutting, and increased horsepower. The belt-fed MVP delivers 2-dimensional dices, strips, or shreds from product of a predetermined thickness. Ideally suited for cutting frozen-tempered, fresh-chilled, or hot-cooked beef, pork, protein alternatives, or poultry. Maximum input product size for firm products should not exceed 1.5" (38.1 mm). The MVP is designed for continuous operation for uninterrupted production.



### CUTTING OVERVIEW

1. Feed Belt
2. Feed Roll
3. Drive Roll
4. Circular Knives
5. Feed Drum
6. Stripper Plate
7. Crosscut Knives (new fluted design shown)

### TYPES OF CUTS

#### DICE

Many sizes of cuts are possible by combining the various selections of circular knife spacings with different crosscut knife spindles.

**Circular range:** 3/16 to 1-1/2" (4.8 to 38.1 mm)

**Crosscut range:** 1/8 to 3" (3.2 to 76.2 mm) standard sizes, fully adjustable up to 6" (152 mm) available with variable speed crosscut motor.

#### STRIP CUT

Strip cuts in a variety of widths can be made by removing either the crosscut knife spindle assembly or the circular knife spindle assembly. The final thickness of the strip will be the same thickness as the original product.

#### SHRED

To produce shreds from meat products, the crosscut knife spindle is replaced by a shredding spindle. The length of the shred can be controlled by orientation of the meat fibers of the incoming product and by the use of a circular knife spindle. Many variables can affect the final product; consult an Urschel representative for details.

### FEATURED PRODUCTS

CLOCKWISE, LEFT TO RIGHT

**Alternative Protein Plank**  
1-1/2 x 1" (38.1 x 25.4 mm)

**Fresh-chilled Chuck Roast**  
3/4" (19.1 mm)

**Frozen-tempered Chicken Breast**  
3/4" (19.1 mm)

**Alternative Protein Shred**

**Cooked Chicken Breast**  
1/2" (12.7 mm) Dice  
3/8" (9.5 mm) Strip

**Pork Skin**  
3/4 x 1-1/2" (19.1 x 38.1 mm)



### MACHINE HIGHLIGHTS

- Offers 33% increased feeding capacity versus standard M6 due to wider feed belts, optimized cutting, and increased horsepower.
- Wider 12" (304.8 mm) infeed (1) and takeaway belts (2) work together to provide even transitioning of product and prevention of product build-up. Takeaway belt facilitates discharging into totes.
- Simply turn the belt tensioning knob and rotate (3) to execute belt changeovers.
- Equipped belt scrapers (4) slide out for easy cleaning without use of tools.
- Stainless steel construction throughout with solid, round bar frame, motors, and hinged panels. Hinged panels (5) provide easy and complete access to promote sanitation and ease of maintenance.
- IP69K certified electrical enclosure (6) features a double-sealed door for extra protection during washdowns.
- 5 or 6" (127 or 152.4 mm) circular knives (7) and spacers are interchangeable to provide expert cutting results.
- New patented, fluted crosscut (8) option provides gentler cutting action. Deeper circular knife to feed drum (9) penetration produces an improved cutting method.
- The crosscut is driven by a 5 HP (3.7 kW) motor (10) equipped with a variable frequency drive to allow adjustment of the cut size without the additional expense of changing parts.
- Features improved, time-saving quick set shear edge (11).
- Mechanical zone (12) is isolated from the product zone to promote sanitation.
- Wire looms (13) hold lines in place while allowing easy washdown.
- Cantilevered spindles (14) with easily replaceable seals prevent grease from entering the food zone.



- All 6 ball-bearing lubrication points (15) are easily accessible on the exterior of the machine and may be regreased while the machine is running.
- Available intuitive Allen-Bradley® touchscreen HMI option (16) easily gathers data, monitors machine components including sensors and amperage; adjusts operating speeds, and saves recipes. Touchscreen swivels for full visibility.



# M VersaPro Dicer

## DIMENSIONAL DRAWING

### SPECIFICATIONS

**Length:** 129.36" (3286 mm)

**Width:** 33.90" (861 mm)

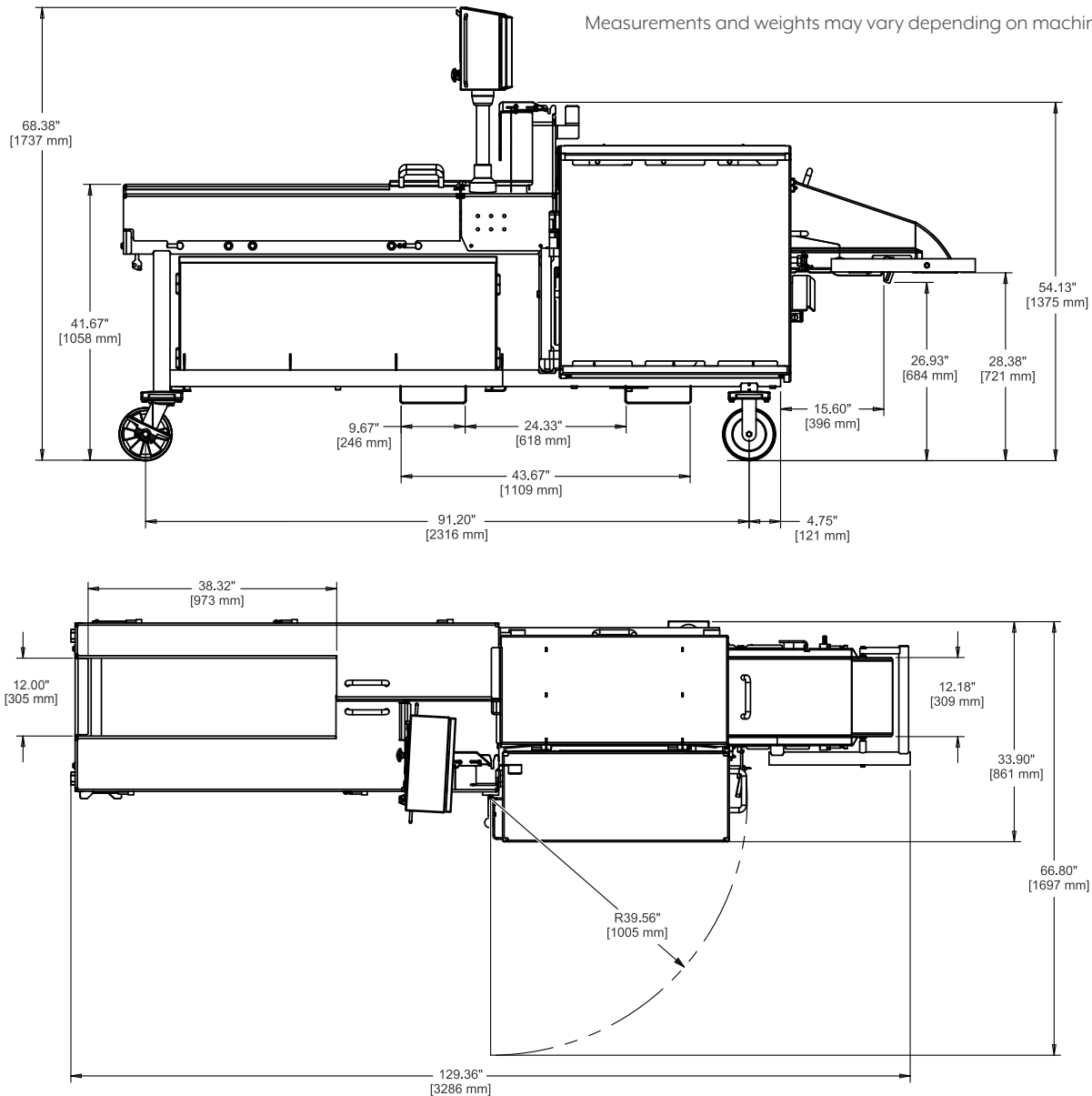
**Height:** 68.38" (1737 mm)

**Net Weight:** 2600 lb (1179 kg)

**Motor:** 5 or 7.5 HP (3.7 or 5.6 kW)

**Crosscut Motor:** 5 HP (3.7 kW)

Measurements and weights may vary depending on machine configuration.



# URSCHEL®

info@urschel.com | www.urschel.com

**You are Invited to Test Cut Your Product**

Urschel has a complete network of test facilities and experienced service and sales representatives around the world ready to work for you on any size reduction application. Test cutting of your product is available in-person, live remotely, or via video. Contact your local Urschel representative to schedule a comprehensive, no-obligation test today at [www.urschel.com](http://www.urschel.com).

**THE GLOBAL LEADER  
IN FOOD CUTTING TECHNOLOGY®**

NORTH AMERICA | EUROPE | SOUTH AMERICA | ASIA | AUSTRALIA | AFRICA

**#1 Best Selling**  
provider of industrial cutting  
machinery throughout the world.