

Investing
in our Future.



More than 2,350 employees across the sales offices and the 4 production plants in Ybbsitz, Gresten (Austria), Bönen (Germany) and Valley City (USA) are continually working to successfully bring the requirements of our international customers to fruition.

We make
the impossible possible



Life takes shape with Welsch Profile

Welsch Profile GmbH
Prochenberg 24
A-3341 Ybbsitz / Österreich
Tel (+43 7443) 800-0
at@welsch.com

Welsch Profile Austria GmbH
Prochenberg 24
A-3341 Ybbsitz / Österreich
Tel (+43 7443) 800-0
at@welsch.com

Wieselburger Straße 1
A-3264 Gresten / Österreich
Tel (+43 7487) 410-0

Welsch Profile Deutschland GmbH
Edisonstraße 23
D-59199 Bönen / Deutschland
Tel (+49 2383) 914-0
de@welsch.com

Superior Roll Forming
5535 Wegman Dr, Valley City
OH 44280 / USA
Tel +1 330.225.2500
us@welsch.com

Welsch AG
Seestrasse 96
CH-9326 Horn / Schweiz
Tel (+41) 71 844 80 80
ch@welsch.com

AB Welsch Profiler
Svandammvägen 17A
S-126 35 Hägersten / Schweden
Tel (+46 8) 730 24 00
se@welsch.com

Welsch Profiltechnik (Benelux) B.V.
Maleneind 2
NL-4751 GP Oud Gastel / Niederlande
Tel (+31 165) 51 10 00
nl@welsch.com

Welsch Profilés sarl
Les Propylées 1 • 2 allée des Atlantes
F-28000 Chartres / Frankreich
Tel (+33 237) 33 67 67
fr@welsch.com

Welsch Profiliati S.r.l. Unipersonale
Piazzetta Scaligera 6
I-37019 Peschiera del Garda / Italien
Tel (+39) 045 640 17 95
it@welsch.com

Perfiles Welsch S.L.
Via Augusta 298-1.1.
E08017 Barcelona / Spanien
Tel (+34 93) 252 30 30
es@welsch.com

Welsch Sections (UK) Ltd.
Suite 511 • Chadwick House •
Birchwood Park
Birchwood • Warrington
Cheshire • WA3 6AE / Großbritannien
Tel (+44 0) 161 491 5210
uk@welsch.com

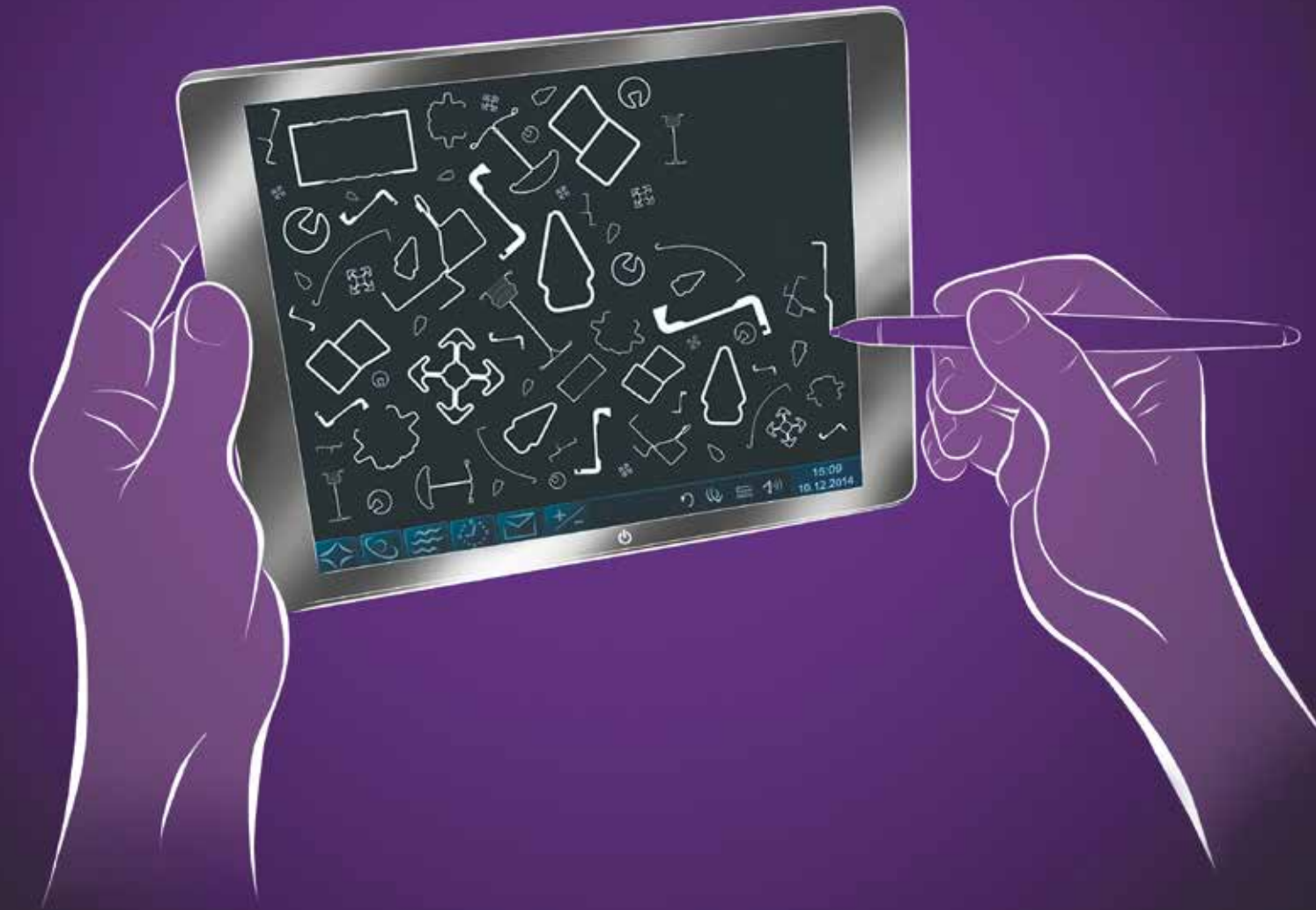
Welsch Profile Sp. z o.o.
ul. Chmielarnica 2/10
PL-30-348 Kraków / Polen
Tel (+48 12) 426 77 70
pl@welsch.com

OOO Welsch Profil
Office 23, 72A, Entuziastov highway,
RU-111123, Moscow / Russische Föderation
Tel +7 (495) 305 68 79
ru@welsch.com

Welsch Profil Sistemleri Tic. Ltd. Sti.
Harbiye Mahallesi
Tespkiye Cad. İktal Ticaret Merkezi No:17
TR-34367 İstanbul / Türkei
Tel (+90 532) 518 13 73
tr@welsch.com

IMPRINT:
© Welsch Profile Austria GmbH
A-3341 Ybbsitz / Österreich
Layout and Outwork: reichlundpartner.com
3rd edition-EN-02.2021

www.welsch.com



Bespoke solutions for a wide variety of applications

Welser partners you through the challenges of converting complex requirements into bespoke metal sections. With our indepth knowledge, unique experience and modern facilities, we specialize in producing the most accurate, economic and efficient solutions.



Forming Capabilities

- Open and welded special metal sections, as well as complete systems, tailor-made to each customer's individual requirements
- More than 90 roll forming lines with over 60 different roll forming stages
- Strip thickness from 0.011 to 0.323 inches (0.3 to 8.2 mm), strip width up to 39.37 inches (1,000 mm), profile length up to 88.5 feet (27,000 mm), profile height up to 12.6 inches (320 mm)
- Cross sectional optimization: The cross-section can be selectively thinned to reduce weight.
- Profile splitting: Profile features can now be split out from the parent shape, producing light, but very strong, complex forms. It is now also possible to vary the width and/or height of a profile along its length.

Materials / Surface Quality

- Materials: Cold rolled strip, hot rolled strip, chrome and chrome-nickel steel, hot dip galvanized strip, electrolytic zinc coated strip, zinc/magnesium, coated steel strip, aluminium and coated aluminium and special materials (e.g. copper, brass, titanium, nickel and other high strength steels)
- Tooling and (bending) fixtures are designed around the surface quality of the output material (e.g. organically coated, ground, brushed and high-gloss).

Punching / Embossing Capabilities

- Modular tooling construction provides greater flexibility.
- Interval punching of complex hole

patterns, deep punching and embossing in the flat strip

- Automatic length correction including 100% length measurement of pre-punched sections
- Slot punching is possible on the roll forming line.
- Shearing to length and cutting of additional features can be performed simultaneously.
- Entire parts can be produced through our multi-step punching presses.

Bending Capabilities

- Roller Bending: Low cost tooling to perform free-form bending to create complex radii combinations
- Rotary bending allows bending of very tight radii with minimal cross section deformation even at high

curvatures - can be combined with free form bending.

- Stretch bending: Optimal for asymmetric, thin-walled, open profiles made from high strength steels
- Press bending can be an economical method of quickly producing shallow curves.
- On-line bending: Continuous bending performed on the profiling machine, very economic with many opportunities for further processing

Laser Capabilities

- Laser Cutting: Ultra-modern 5 Axis Machines facilitate complex three dimensional cutting processes. Materials up to 0.591 inches (15 mm) thick and 27.8 feet (8.5 metres) long can be processed.

Cutting Technologies / Profile End Processing

- Cutting on the profiling machine: Hot or cold saws, shearing and waste-free trimming
- Profile End processing: Various

hydraulic manipulation capabilities, de-burring brushes, laser shaping

- High performance saws

Downstream Processing

- The degree of downstream processing can be determined by the customer.
- A wide variety of reliable connection techniques, including those to withstand dynamic loading, such as riveting, clinching, bonding and other pressure joining methods
- Possibilities to incorporate different materials such as rubber or plastic seals into metal sections
- Additional robotic MIG /MAG welding stations

More Value.

Our aim is to provide you with the optimal solution for your application. Sometimes less is more. A complex application doesn't always require a complex metal section - a high value section does not necessarily mean high costs. Our experts are here to help you.

There's only one area where we don't try to save, and that's Customer Service.

Product Development

- Expertise gained through decades of experience in a wide variety of target markets
- Support from our own technical sales team, particularly in customer development projects
- Illustration by our FEA-supported simulation

Tooling Construction

- All of our tooling is designed and manufactured on-site. This offers several advantages to our customers.
 - » Greater flexibility to make changes
 - » Possibility of ongoing design adaptations
 - » Fast response times
 - » Adherence to deadlines

Logistics

- Security of supply with redundant systems
- Integrated supply and information flow across the whole value added chain
 - » Just in Time / Traceability
- State-of-the-art logistics solutions within our manufacturing plants
 - » Economic production
- On-site rail links in Gresten (Austria), Bönen (Germany) and Horn (Switzerland)
- Logistics centre in Horn

Product packaging and logistics are optimized to customer requirements.

Total Quality Management

- Feedstock material is inspected by means of
 - » Quality assessments
 - » Inspection certificates
 - » Sample inspections
 - » Supplier audits
- The same standards are applicable to all production sites.
 - » Static 3D co-ordinate measuring machine
 - » Mobile 3D measuring device
 - » Inductive measuring systems
- First article approval
- Customer audits (Process/system audits)

Exclusivity

- We guarantee our customer's confidentiality.
- Intellectual property is documented and recorded.
- Simultaneously our customers can benefit from our huge experience in non-exclusive metal section developments.

Quality Certifications

- Quality Management System ISO 9001:2015
- Quality Management System IATF 16949:2016 (Automotive)
- Environmental Management System ISO 14001:2015
- Occupational Health and Safety Management System ISO 45001:2018
- Energy Management System ISO 50001:2018
- Execution of Steel Structures and Aluminium Structures EN 1090-4:2018
- Railway Applications. Welding of Railway Vehicles and Components EN 15085-2:2020

