



Berker W.1
Waterproof range IP55





Berker W.1

The design for wind and weather

This new Berker by Hager mounting equipment series for installations in humid rooms is highly durable, beautifully designed and installer-friendly. Owing to the IP55 protection class and the wide selection of functions, the Berker W.1 series is a viable choice for residential, power station, industrial and other environments in which prime quality is required for the installation.



IP55 Protection

The housing has been designed to provide protection against weather and wind irrespective of the season. The high protection class prevents dust from entering the housing and ensures that water spurting from any direction runs out in the best possible manner.

Fast and easy to install

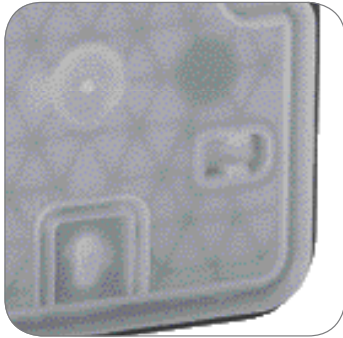
Maximum comfort and time saving

Time being a limited resource in this day and age, we have developed a quick mounting system for the Berker W.1 mounting equipment. For this reason, mounting can be conducted at a record pace and in a particularly easy manner.



System description

Berker W.1 products consist of a surface-mounted housing, electronic insert, frame with integrated sealing and cover.



Backside sealing

The sealing which is integrated in the backside of the surface mounting boxes covers unevennesses of the wall and ensures the water will not get behind the box. Additionally the sealing also seals automatically the fixation screws and if used the cable entry on the backside.

- + It prevents the housings from moving during marking, drilling and mounting, so they are easy to place in the correct line.
- + The seal evens out uneven areas of the wall surface, which allows the housing to settle onto the surface in a neat and safe way.
- + The film ensures that no water enters the housing while a screw is being screwed through it during mounting (even when the screw is removed again).
- + It ensures an excellent seal when a cable is run through the posterior surface.



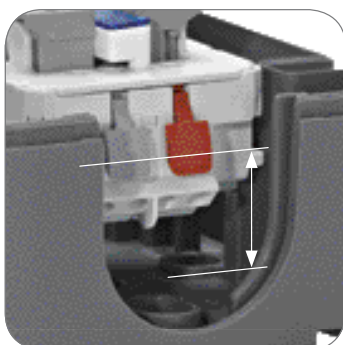
Special fastening system

The housing is equipped with quick fastening clips, with the aid of which the insert (e.g. switch or socket) is always in the correct position and also remains in it after the connection of the cables. The insert can be fastened effortlessly with one hand. This facilitates the connection, as well as the fastening of the cover.



Fast fixation system

The housing cover is fastened with special screws. These screws only need to be rotated a quarter-turn with a normal screwdriver, and the installation is done. This significantly reduces the mounting time.



Maximum space for handling

Owing to the special seal, screw shanks are unnecessary, and the fastening clips ensure there is space beneath the instrument frame. In this way, the connection space can be maximised and the connection of the cables can be facilitated.



Versatile

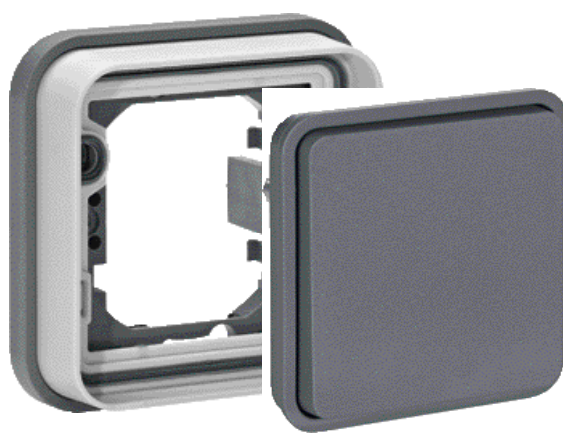
Multiple functions and possibilities

Almost anything is possible with the Berker W.1. In addition to traditional functions, the Berker W.1 series features special functions, such as key switches, indicator lights, emergency stop buttons, antenna sockets, as well as data network and speaker interfaces. The selection of functions and the effortlessness with which they can be combined make the product series incredibly variable.

Frequently used surface-mounted switches and sockets can be mounted on the wall surface easily. Now you have a new mounting possibility at your disposal. For this, we have developed a new flush-mounted adapter for 1-, 2- and 3-gang combinations. With the help of the frame, the equipment can be combined for both surface and flush mountings while retaining the consistent quality of the appearance and usability of the mounting.



Switch with surface-mounted housing



Switch with flush-mounted frame

Structure and mounting

The desired functions can be mounted on the wall surface with the aid of a multi-purpose surface-mounted box. The function can also be mounted on the instrument box with a special flush-mounted frame. The advantage of this mounting method is a much lower structure while retaining the IP55 protection class.



The optional light frames really catch the eye. In addition to the aesthetic aspect, they bring functional advantages, such as better visibility in (parking) garages, warehouses and gardens after dark.

Stylish design

Suitable for all environments

The Berker W. 1 selection comes in two colours: a completely polar white solution and a combination of steel grey and light grey. The sturdy steel grey option blends into most installation environments in an excellent manner. The polar white option is ideal for balcony and porch environments.



Polar white
(RAL9010)



Steel grey
(Housing RAL7011, cover frame RAL7035)

Definitely a bright spot

The illuminated frame combines a aesthetic design and function. Even at night, the illuminated frame functions as an excellent search light. The illuminated frames can be ordered as optional accessories in 1 part or 2 parts for vertical mounting.

Complete or modular Everything is possible

It makes no difference whether you want to use products that are used complete with the housing or combinations of products that can be assembled: both are now possible.



Modular



Complete

Versions

Plastic matte:

steel grey RAL7011 light grey frame RAL7035
polar white RAL9010

Company
Address line 1
Postal code, town/city

Phone
Fax
E-mail

Visitor-/ Shipping address:
Address line 1
Postal code, town/city

Website

