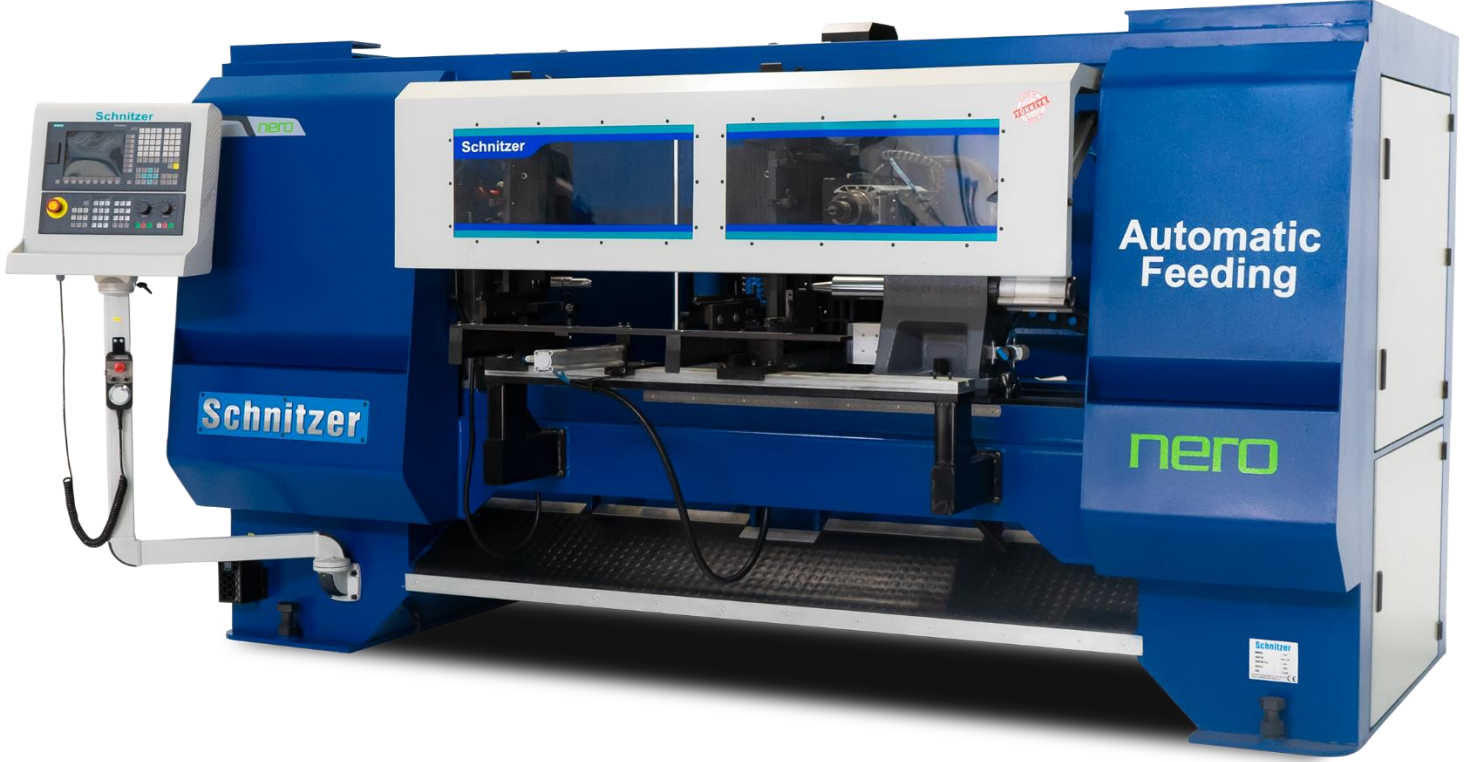


14.01.2022

Schnitzer



PROPOSAL FORM

NERO
4 AXIS 4 UNIT
Automatic Feeding



Video İzlemek İçin

Çataltepe Mahallesi BESOB Sanayi Sitesi
4. Sokak No: 17/1, 16450 Kestel/Bursa

www.schnitzer.com.tr

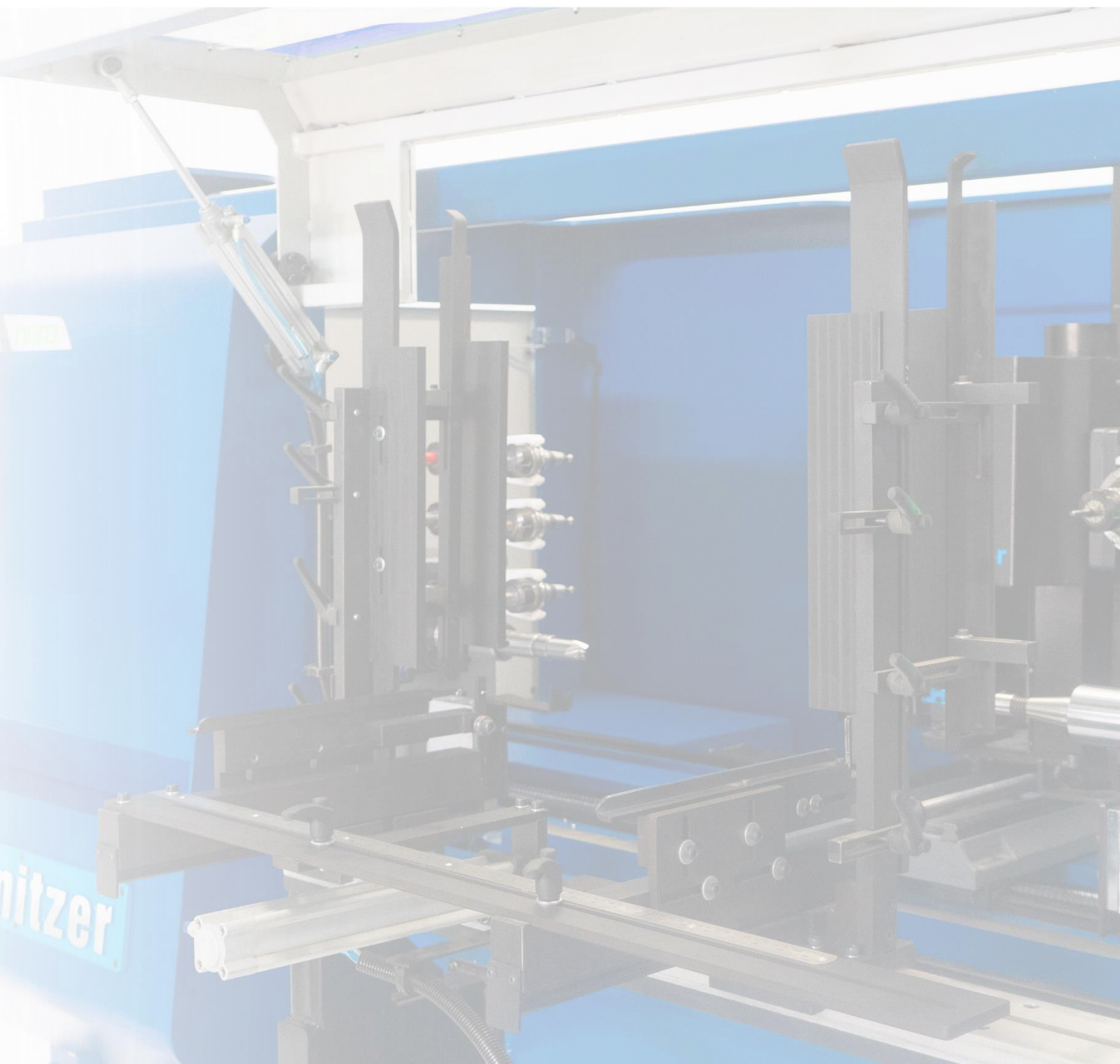
DATE: 14.01.2022
REF: SCH-000004-22

Dear Sir,

Thank you for your interest in our company. The information about our NERO 4 AXIS 4 UNIT (AUTOMATIC FEEDING) model that you have requested from us is presented below for your review.

You can contact us for any questions or requests regarding our offer. We hope that our offer will be received positively by you, and we wish to contribute to your successful work.

Regards
Schnitzer



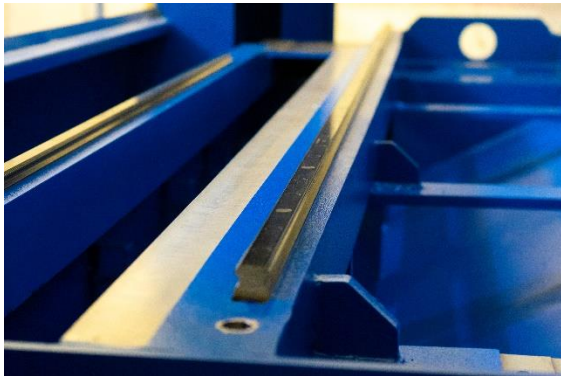
1. STANDARD MACHINE TECHNICAL SPECIFICATIONS

AÇIKLAMA	BİRİM	DEĞER
MAX SQUARE	mm	160x160
MAXIMUM LENGTH	mm	1200
X AXIS SPEED	m/dk	70
Z AXIS SPEED	m/dk	40
Y AXIS SPEED	m/dk	30
WORKING POWER	kW	22
X AXIS SIEMENS	kW	1,5 - Absolute Servo Motor
Z AXIS SIEMENS	kW	1 - Absolute Servo Motor
Y AXIS SIEMENS	kW	0,75 Absolute Servo Motor
A AXIS SIEMENS	kW	3,7 – 6000 Devir Servo Spindle Motor
WEIGHT	Kg	3200
WORKPIECE CENTERING FESTO	✓	FESTO
LINEAR MOVEMENT SYSTEM CMSA®	✓	CMSA
WORKPIECE CLAMPING FESTO	✓	Pnömatik
AUTOMATIC CENTERING	✓	✓
AUTOMATIC LUBRICATION Schnitzer	✓	Schnitzer
HANDWHEEL	✓	✓
CONTROL UNIT SIEMENS	✓	Siemens 808D

2. GENERAL SPECIFICATION

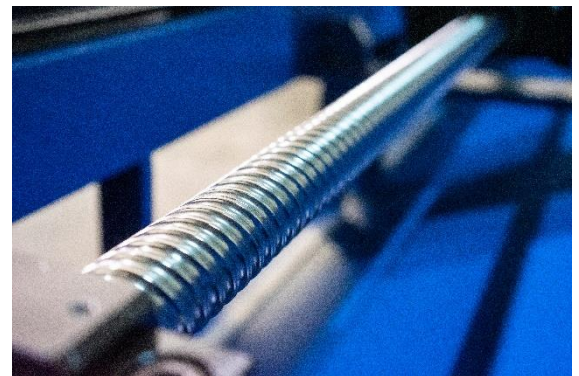
BODY STRUCTURE

The main body of our machine is turned into a one-piece monoblock body by welding the steel sheet materials. In this way, it provides vibration-free operation and error-free part processing.

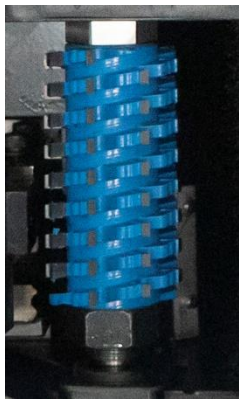
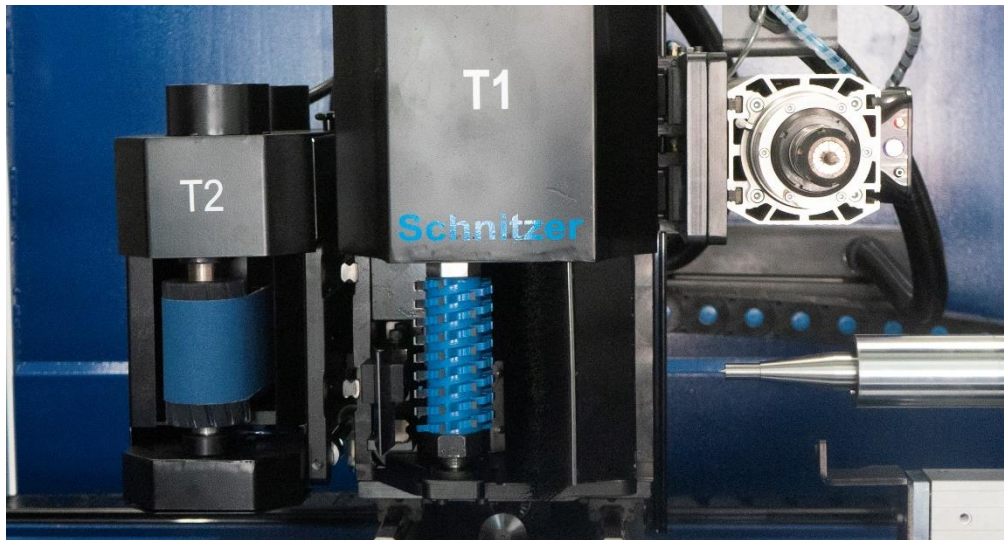


In order to achieve maximum durability, our machines use durable solid steel benches, not sheet metal coating on the profile.

Thanks to the 40x40 long axis ball screw, faster movement and part processing are provided in a short time. It does not lose its sensitivity even at high speeds.



MACHINE UNIT INFORMATION



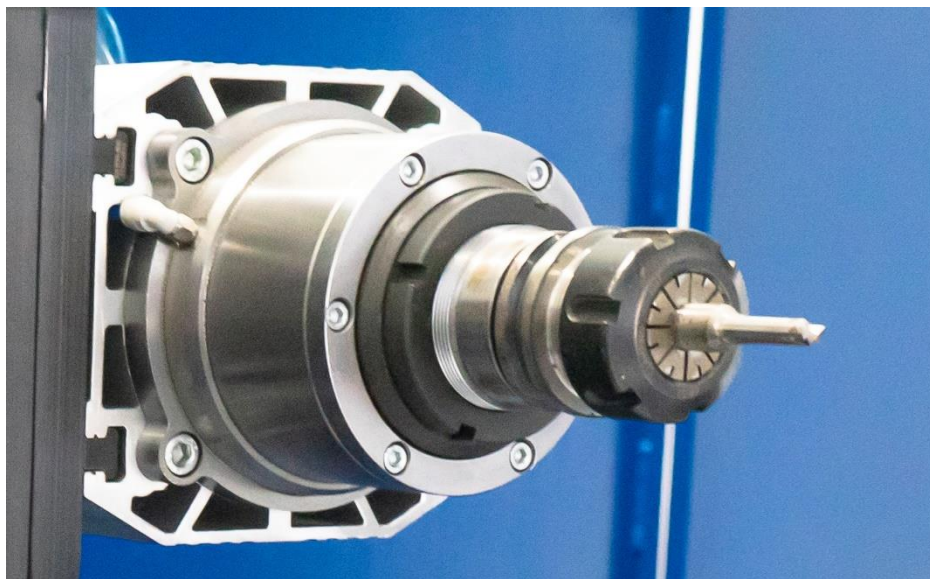
Roughing for **Debarker**



Detail cut for **V Knife**

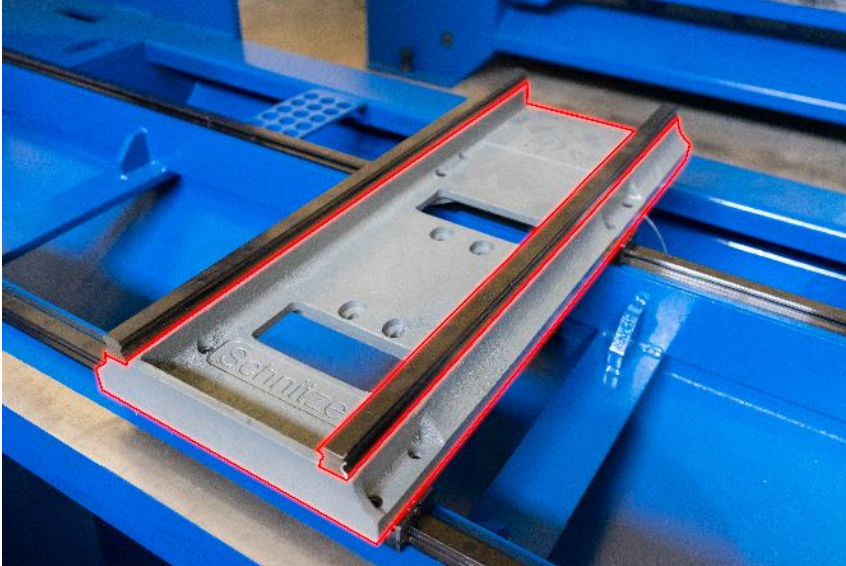
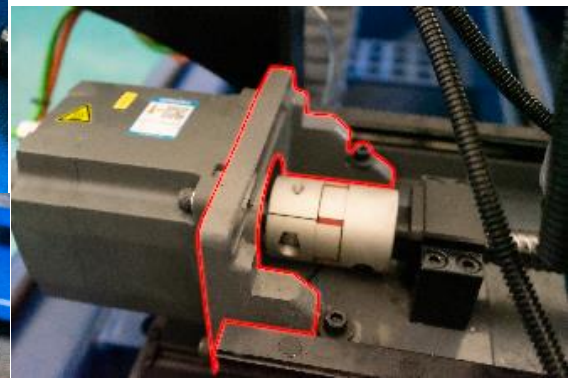
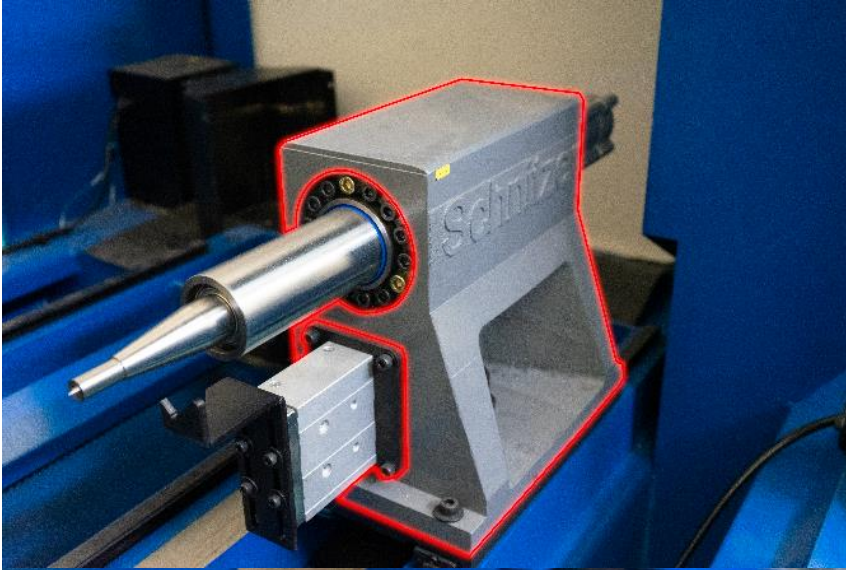


Oscillating Sanding to improve surface quality



Bract, carving, canal processing for Milling Tool

CASTING TECHNOLOGY



Cast material is used to dampen the vibration at the points that cause vibration (motors, cutter group and rotating tree), which was developed in order to absorb vibration in our machine, and to prevent vibration at the points that carry the transmission center, engine mounting apparatus and cutter group.



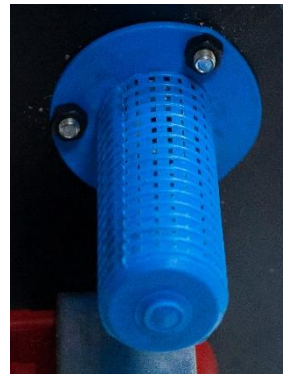
By absorbing the vibration that may occur on the machine, it prevents the transmission of vibration to the important parts of the engine, electrical parts and joint or welded connection points, ensuring a longer life of the machine, and at the same time, the surface of the wood part processed by the machine is provided to be cleaner.

CENTRAL LUBRICATION UNIT

The machine has a specially developed sensitive central lubrication system that can lubricate at 20 points. The hydraulic oil used on the system contributes to the longevity of the moving parts and reduces maintenance costs. It provides less labor in the long run with its break-proof 2.5 liter reservoir.



A specially designed buoy against corrosion that may occur in oily environments



Double-layer filter that prevents the sediments that may form in the tank from the environment from damaging the engine.



Italian engine capable of lubricating 20 points without any problems.



It provides a long service life with the metal cover used in the filling part.

3. MAIN EQUIPMENTS

SIEMENS 808D CONTROL PANEL

SIEMENS

7.5" LCD screen

- USB integrated on the front of the panel
- 80bit NANOFP calculation precision
- Extended ISO programming language support
- Advanced technology cycles for Milling and Turning
- Easy commissioning with SINUMERIK 808D startGUIDE



The control panel developed by Siemens, which provides high efficiency, can be commissioned in a short time without the need for expertise with the Standard PLC program and easy commissioning assistant. Thanks to an operator panel with an IP65 degree of protection, the SINUMERIK 808D ADVANCED provides the best performance in harsh environmental conditions.

HANDWHEEL



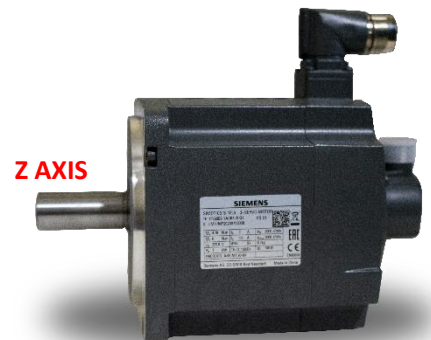
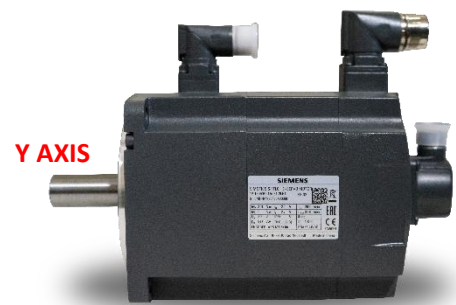
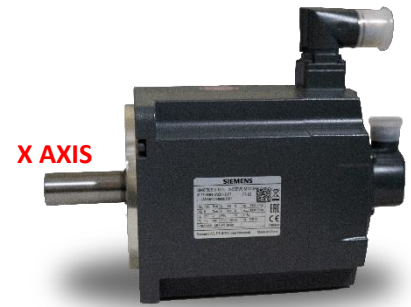
There is a hand wheel in our machines for precise adjustments and progress controls.

SIEMENS ABSOLUTE ENCODER MOTOR

SIEMENS SIMOTICS S-1FL6 servo motors are designed to operate without external cooling, and heat is dissipated on the motor surface. With SIMOTICS S-1FL6 servo motors combined with SINAMICS V90 servo drive, a powerful servo drive system with high functionality is created. SIMOTICS S-1FL6 motors have high dynamic performance, wide speed control range and high shaft end. Motors with Siemens absolute encoder do not require reference.

ADVANTAGES

- Robust design with IP65 rating for complete protection
- Smooth running quality thanks to low torque fluctuation
- 300% overload capacity due to high acceleration
- High rated speed for some Variants

**USAGE AREAS**

Motors have 300% overload capacity

SIEMENS 6000 RPM SERVO SPINDLE ENGINE **A AXIS**

SIEMENS

Siemens servo spindle motor provides higher productivity, higher vibration resistance and better cutting performance in our machine.



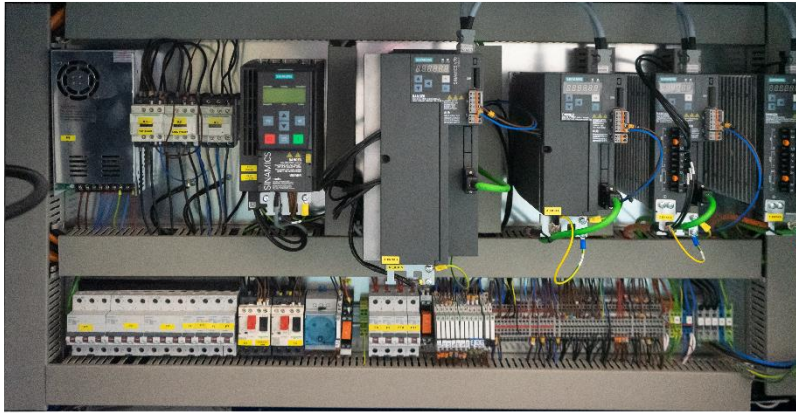
Thanks to the air cooling on the Siemens servo spindle motor, overheating and possible problems are prevented. It offers the opportunity to work 24 hours a day without interruption.

Since the timing gear and belt system have a toothed structure, they do not skid, thus ensuring that the machined part comes out smoothly. They are quieter and absorb squeaking and vibration.



With its developed **electromagnetic brake system**, it ensures that the part is fixed and processed without any problems in angled operations. It is more durable and long-lasting thanks to its low friction. The time taken for brake applications is also less.





Automation panel interior

SIEMENS DRIVERS

SIEMENS



Siemens drives, developed for high performance standards, make it easy to use with a simple customizable interface. It provides full durability in harsh environmental conditions.

SIEMENS FUSE

SIEMENS

Long-lasting and non-heating Siemens fuses are systems produced with the latest technological materials. It provides superior protection for all problems that may occur in areas where electric current passes.



SCHNEIDER CONTACTOR

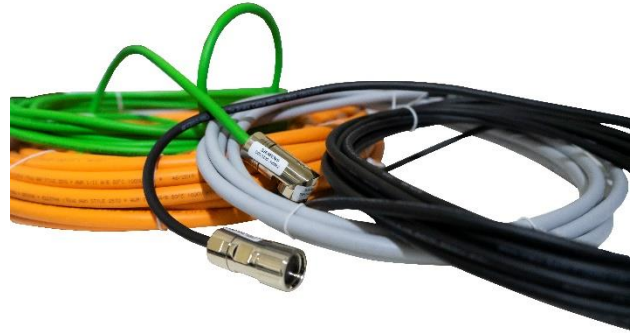
SIEMENS



Offering the widest range of solutions for feeding, controlling and protecting electric motors, Schneider contactor provides a high level of protection against overloads and short circuits, machine safety standards.

SIEMENS CABLE

Thanks to the special coating on the outer surface of Siemens cables, they provide long-term protection in moving areas and are resistant to friction.

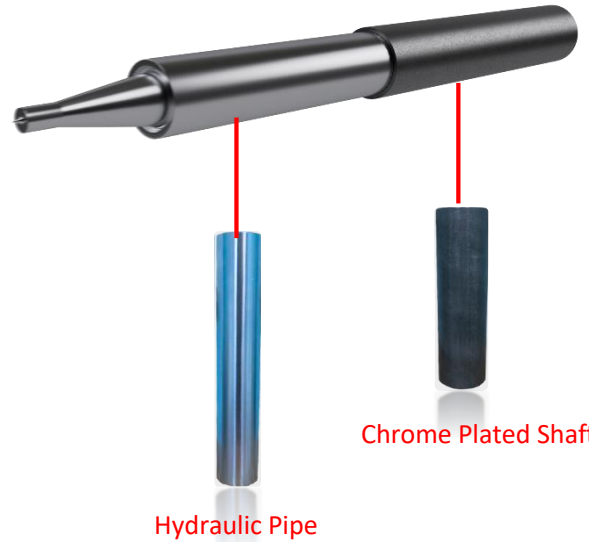
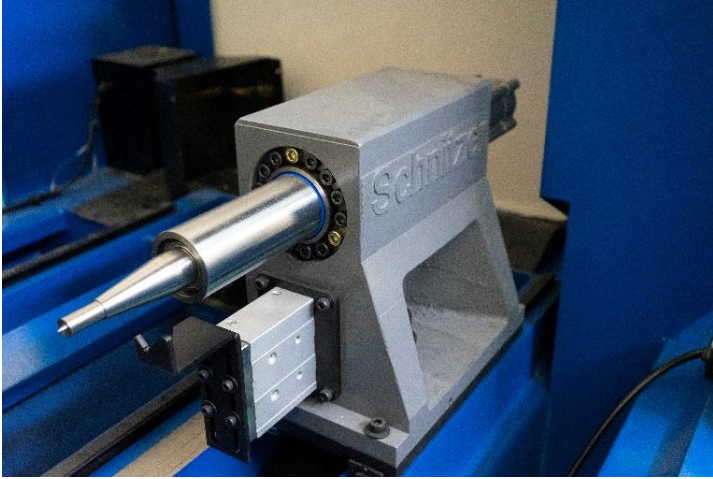


FESTO PNEUMATIC



Pneumatic systems produced by Festo, one of the world's best pneumatic brands, are robust and have high flow rates.

CHROME PLATED SHAFT



Thanks to the hydraulic pipe and chrome-plated shaft used in the tailstock group, healthier and more comfortable movement is provided.

GERMAN AND ITALIAN



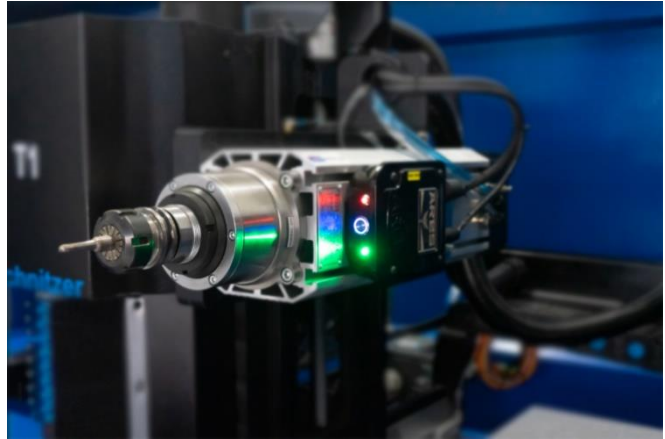
With high running accuracy, high speed performance and high system rigidity, SKF super precision bearings also minimize noise, vibration and heat generation.



Fag bearings with narrowed tolerance values offer perfect solutions especially in conditions that require high positioning accuracy and high speed.

AREL 18,000 RPM SPINDLE ENGINE

You can perform your milling operations (grooving, hole drilling, pocket emptying, etc.) in a short time and obtain quality surfaces with the Arel spindle motor, which can reach higher speeds with a longer life and healthier thanks to the ceramic bearings used inside.



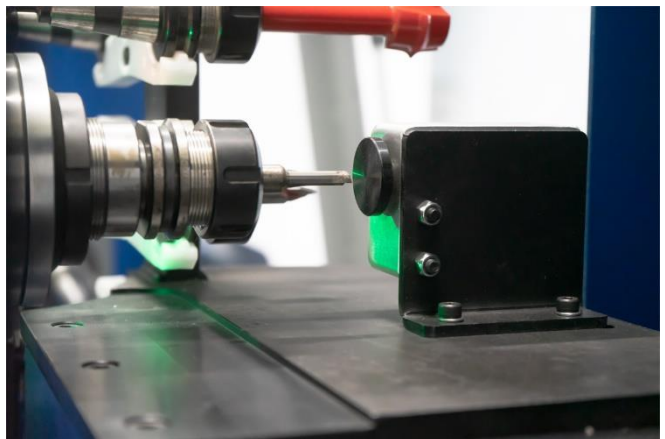
5-PIECE AUTOMATIC TOOL



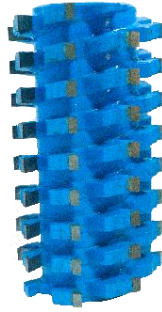
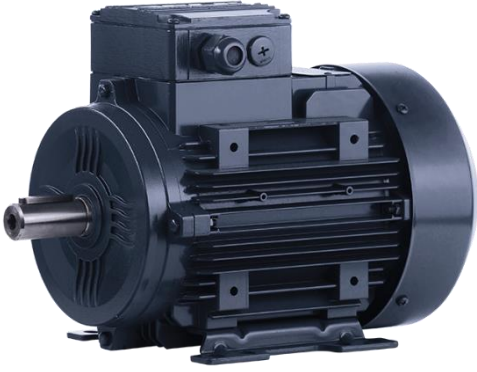
You can automatically select different tools from the 5 tool holders on the machine with Arel spindle motor and make them ready for work.

AUTOMATIC TOOL RESET

With its high precision tool reset switch, it automatically calculates different tool lengths and prevents time loss.



7.5 kW DEBARKER ENGINE



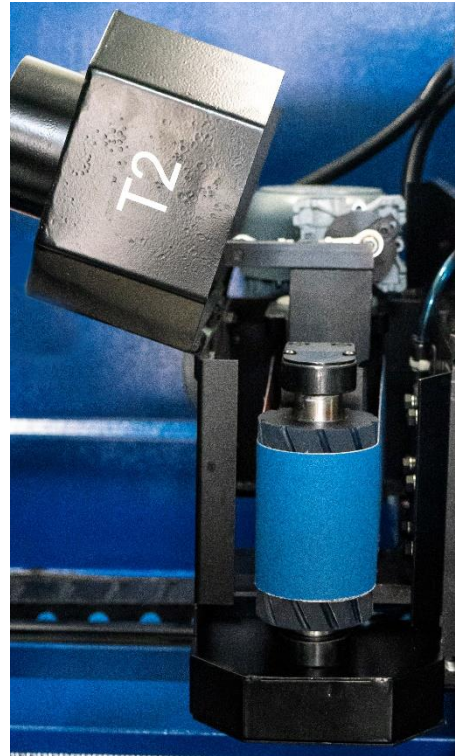
Thanks to the power provided to the debarker by the 7.5 kW ELK motor, it provides superior cutting quality in all tree models. Thanks to the debarker used with a diameter of 80 mm and a length of 150 mm, machining operations on the part can be done easily and it maintains the surface quality.

OSCILLATING SANDING

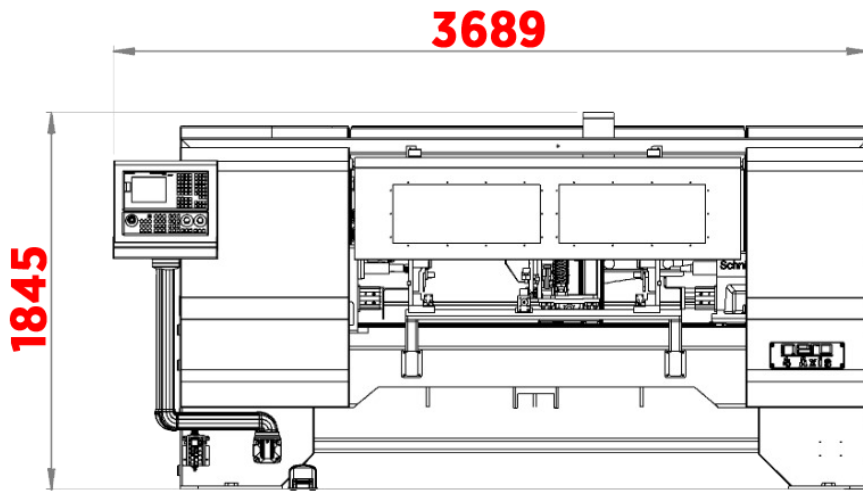


Thanks to the oscillating sanding unit used in our machines, height differences and edges on the product are taken into account, smart abrasion is performed and a high quality surface is obtained.

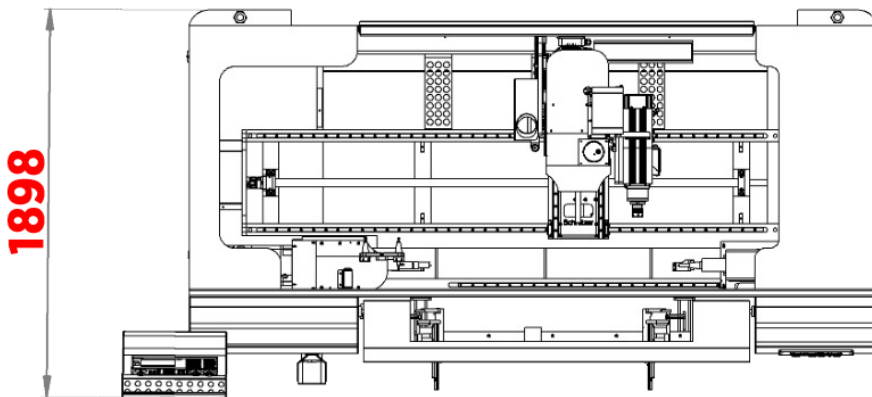
Thanks to the easy-opening protection plate, you can change the sandpaper without wasting time and continue your work quickly.



MACHINE DIMENSIONS

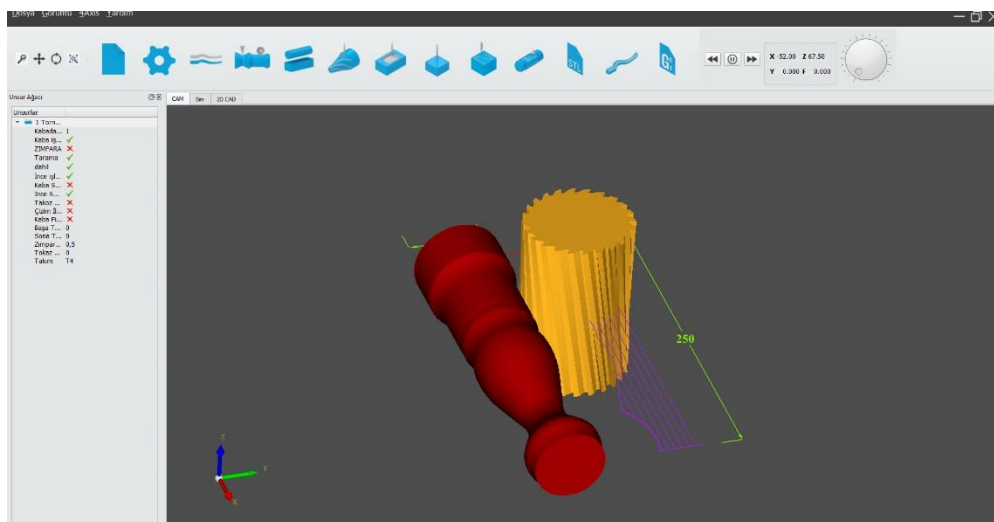


HEIGHT : 1845mm
LENGTH : 1898 mm
WIDTH : 3689 mm
WEIGHT : 3200 Kg



Packaging dimensions

SCHNITZER CAM

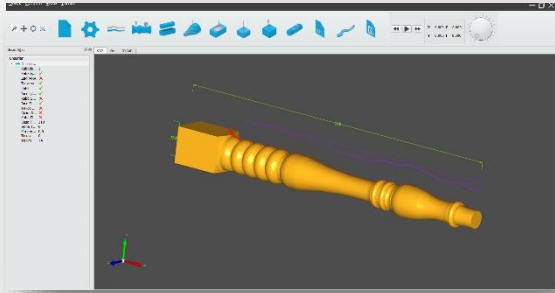
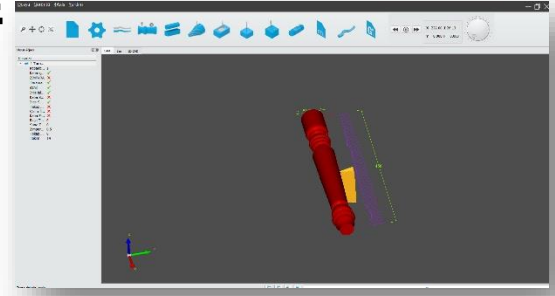


SchnitzerCAM, which is designed to offer the best Cad/Cam program to our customers as a result of years of work, and prepared in a simple and useful with completely local and national facilities, reveals excellent results in all your different works.



%100 TURKISH SOFTWARE

SchnitzerCam, which has been developed over the years by Turkish engineers with domestic and national facilities, It has been designed with the aim of being simple and fast.



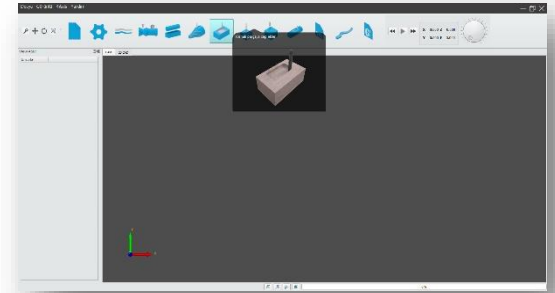
USER FRIENDLY

Having a simple interface and multi-language support, SchnitzerCam has been developed to make your model workable in a very short time.



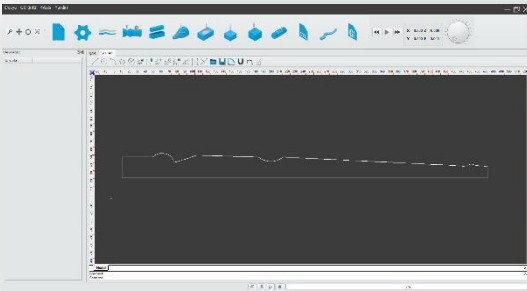
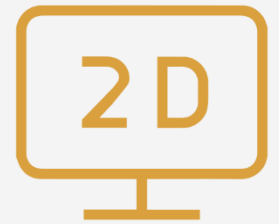
ANIMATION

SchnitzerCam is supported with advanced menu and ending animations to speed up your operations. In this way, you will see the preview without processing your model on the machine and you will not waste time.



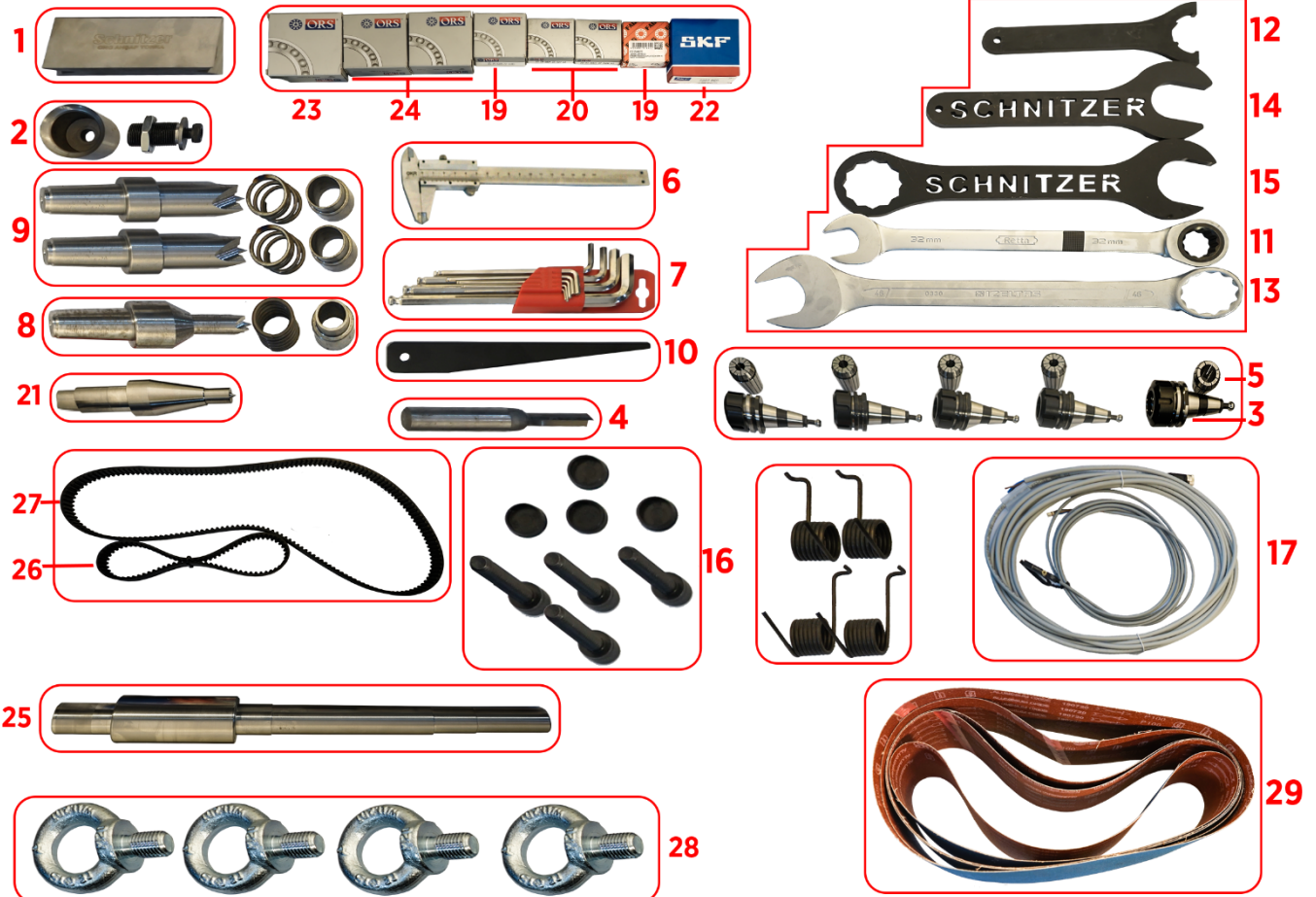
2D DRAWING

To any other program with SchnitzerCam you can make a 2D drawing of your model without the need for.



4. SPARE PARTS AND ACCESSORIES INCLUDED IN THE PRICE

PRODUCT NAME		PCS	PRODUCT NAME		PCS
1	Schnitzer V Knife	1	17	Festo 543862 Piston Sensor	1
2	Schnitzer Cup Knife and Bolt	1	18	6205 Right Tailstock Bearing	1
3	Tool Holder	5	19	51205 Right Tailstock Bearing	1
4	ø8 Milling Cutter	1	20	6004 Right Tailstock Bearing	2
5	Er 32 Pliers (ø12)	5	21	Right Tailstock	1
6	Mechanical Caliper	1	22	7207 Spindle Bearing	1
7	Allen	1 SET	23	6207 Spindle Bearing	1
8	Small Tail Tip	1	24	6206 Spindle Bearing	2
9	Middle Tail Tip	2	25	Spindle	1
10	Morse Wedge	1	26	8M30-680 Timing Belt	1
11	32 Ratchet Wrenches	1	27	8M30-1440 Timing Belt	1
12	Er 32 Key	1	28	Lifting With Eye Bolts	4
13	İzeltaş 46 Key	1	29	Sandpaper	5
14	Schnitzer 46 Wrench	1	30	Magazine Spring Right-Left	2 SET
15	Schnitzer 50 Wrench	1			
16	25 Rail Bolts and Plugs	4			



5. DELIVERY AND PAYMENT INFORMATION

PAYMENT TERMS

Unless otherwise stated in the delivery conditions, the sale of machinery is made in cash or by leasing method in the order. In the event of the sale, the customer must make the payment according to the payment schedule specified in the sales contract. Prices exclude VAT and ALL prices are ex-works unless stated otherwise.

DELIVERY CONDITIONS

The machine will be delivered from the Manufacturer's Production facilities located at the address of BESOB industry Kestel / BURSA. Unless otherwise stated, responsibility passes to the buyer company at the delivery address.

DELIVERY TIME

Machine delivery time is between 4 – 6 weeks, excluding shipments from stock. The delivery period starts after the machine order is officially placed and the Contract signed by the customer is delivered to SCHNITZER by hand, post or e-mail. The manufacturer cannot be held responsible for delays in machine delivery in extraordinary circumstances beyond its control. Extraordinary situations are clearly stated in the Sales Agreement made at the time of order.

WARRANTY PERIOD

The machine is under warranty for 1 year following the delivery from the manufacturer's facilities to the customer. The scope of warranty covers spare parts and service costs, except for user errors specified in the user manual.

INSTALLATION AND TRAINING

Installation and training services are provided by SCHNITZER personnel. Installation and training services are included in the price, but the transportation and accommodation costs of the technicians who perform the installation belong to the buyer company. In installations not made by SCHNITZER, the machine is out of warranty. Machine installation and training services cover a period of 2 days for 2-axis machines and a maximum of 4 days for 4-axis machines. Training activities include general machine usage and Schnitzer CAM trainings

Product Description	Explanation	PCS	Price
CNC WOOD TURNING MACHINE	4 AXIS 4 UNIT Automatic Feeding	1	
Grand Total			